



Office building

586 m², Prague 5, Hlubočepy, Nad pomníkem

€ 13.50 / m² | CZK 341 / m²



**Office building****€ 13.50 / m² | CZK 341 / m²**586 m², Prague 5, Hlubočepy, Nad pomníkem

Service price	35 000 CZK monthly
Tenant consumption	Separately metered services supplied directly to the tenant
Parking	Yes
Parking service charges	—
Parking ratio	—
Certification	—
PENB	D
Reference number	102554

The completely renovated building with a large garden, located in a quiet residential area in a residential neighbourhood, offers office space for lease with panoramic views of Prague. The building has kitchenettes, sanitary facilities including shower, server room and facilities for storage and maintenance. Possibility of using a one-room apartment. Parking is only available in the paid zones.

Location:

The villa is located on a southern hillside in a residential area in Prague 5-Hlubočepy near Dívčí hrady and Prokopské údolí. The bus stop Žvahov and the train stop Prague-Žvahov are both within 5-10 minutes walking distance. The nearest metro station is Smíchovské nádraží.

Features and Services:

- Air conditioners
- Openable windows
- Garden
- Kitchenettes
- Dog friendly
- Carpets
- Lowered ceilings
- Parking in paid zones
- Storage areas
- Shower, toilets
- Maintenance facilities
- Internet, optics
- Gas boiler
- Server room

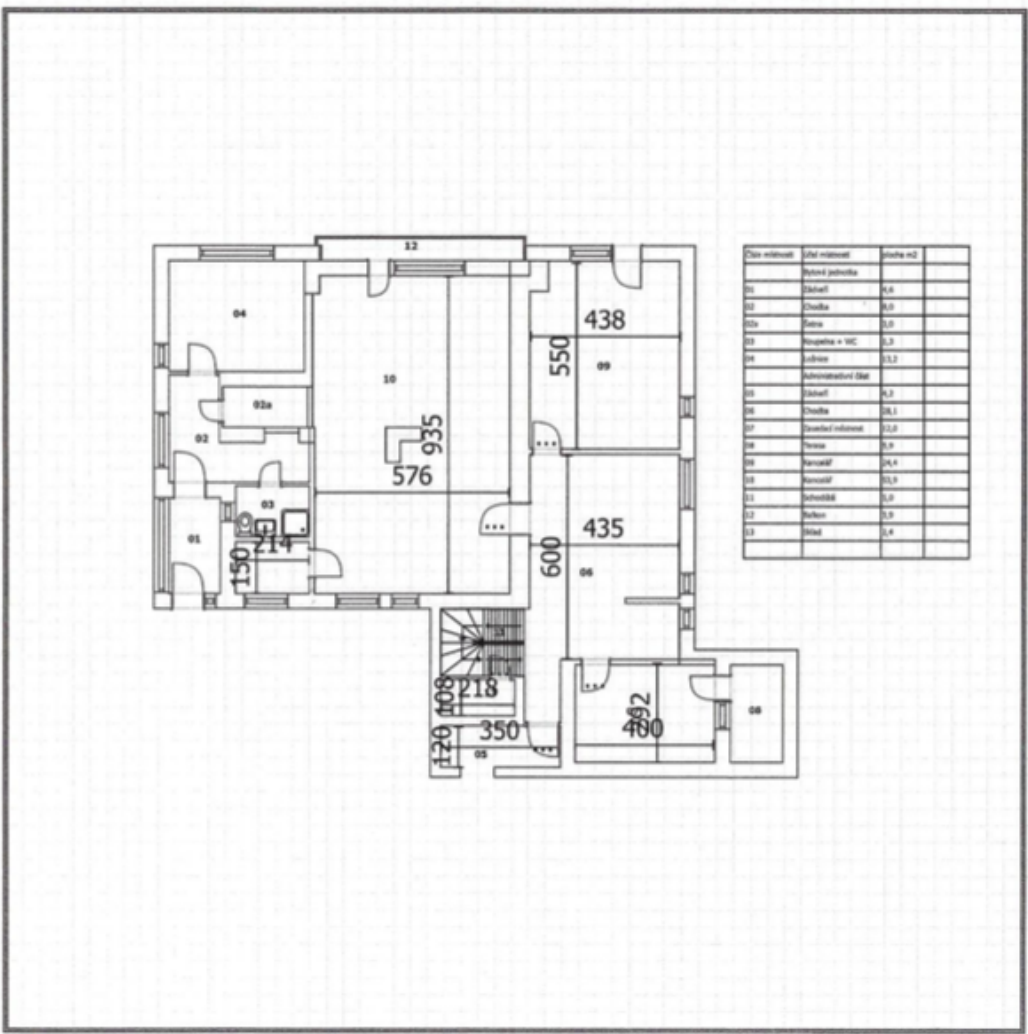
Rental and service charges listed without VAT. Lessee pays no commission.



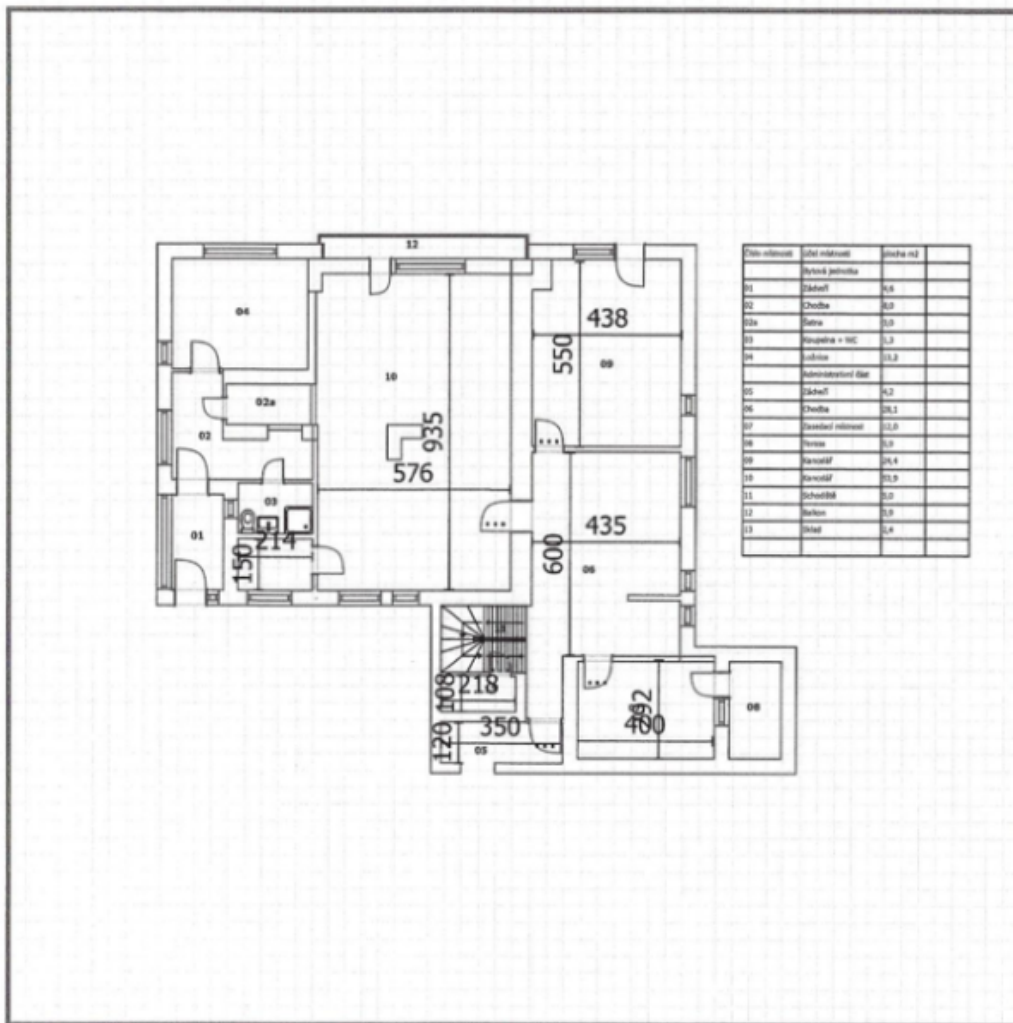
Office building

586 m², Prague 5, Hlubočepy, Nad pomníkem

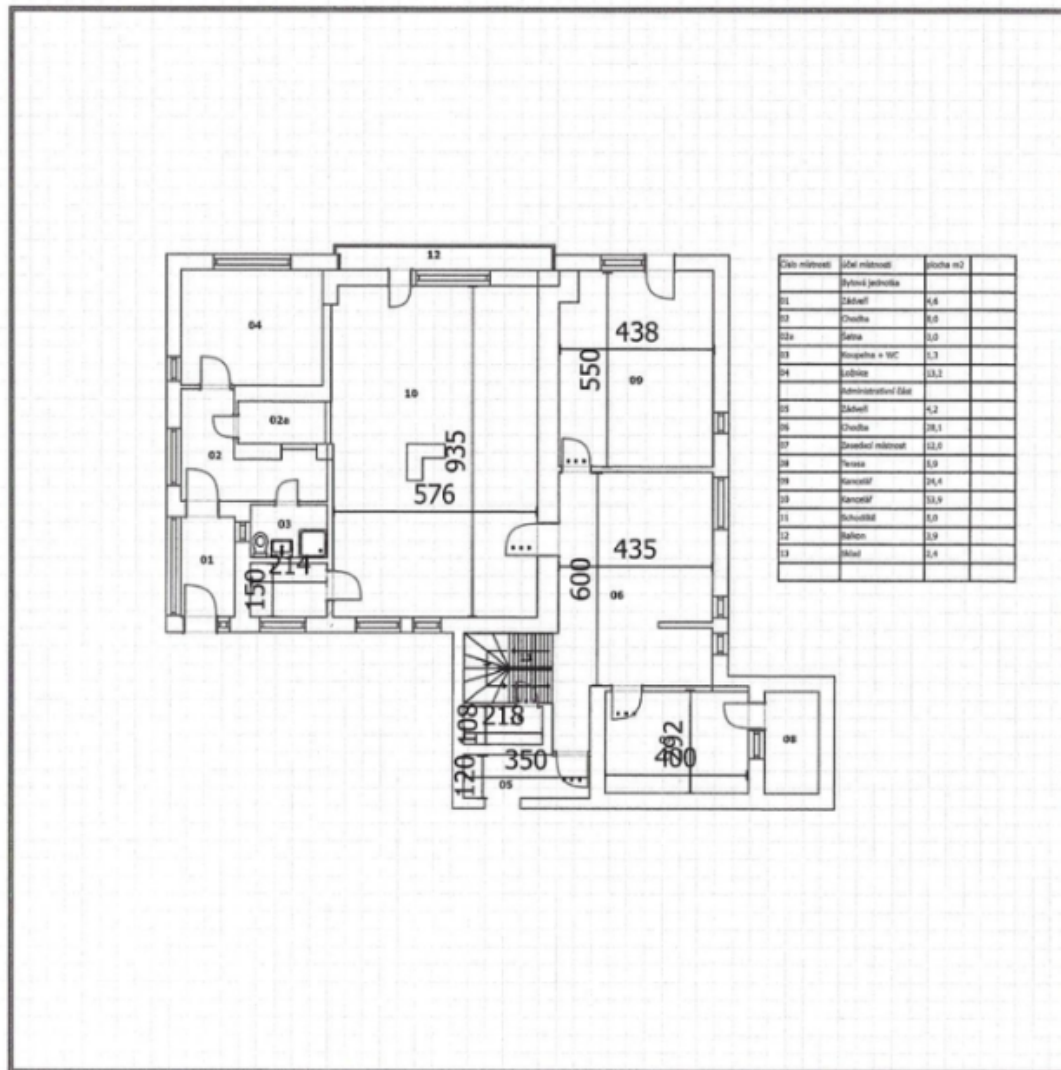
€ 13.50 / m² | CZK 341 / m²



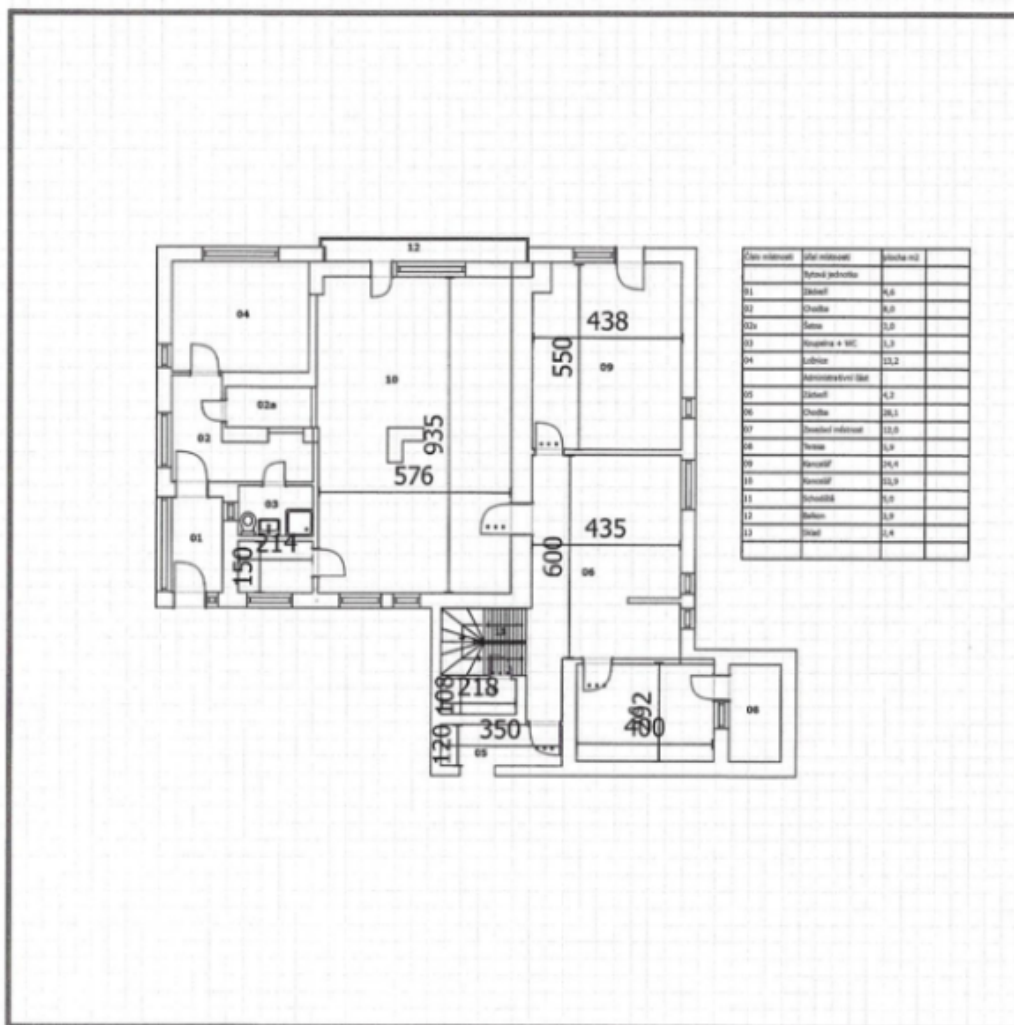
550 cm; 1 : 213,27



550 cm; 1 : 213,27



550 cm; 1 : 213,27



550 cm; 1 : 213,27