



Office space

€ 13.53 / m² | CZK 341 / m²

Prague 5, Hlubočepy, Nad pomníkem



**Office space**

Prague 5, Hlubočepy, Nad pomníkem

€ 13.53 / m² | CZK 341 / m²

| | |
|-------------------------|---|
| Service price | 35 000 CZK monthly |
| Available area | 586 m ² |
| Cellar | - |
| Parking | Parking is possible only in the paid zone |
| PENB | D |
| Reference number | 102555 |

Office space for lease in a villa with panoramic views of Prague. This completely renovated building with a large garden is located in a quiet residential area in a residential complex. The property has kitchenettes, sanitary facilities including shower room, server room and facilities for storage and maintenance. Possibility of using a one-room apartment. Parking is only available in the paid zones.

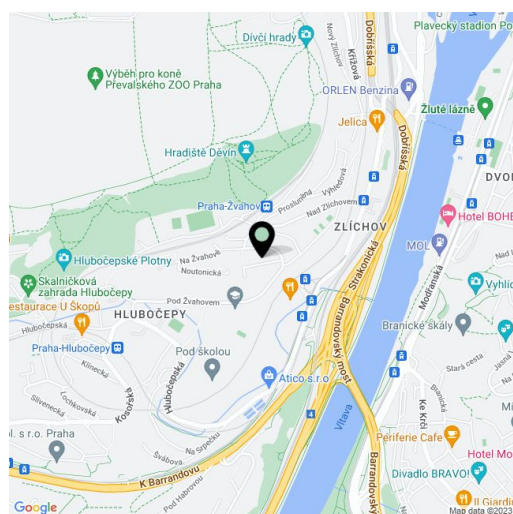
Location:

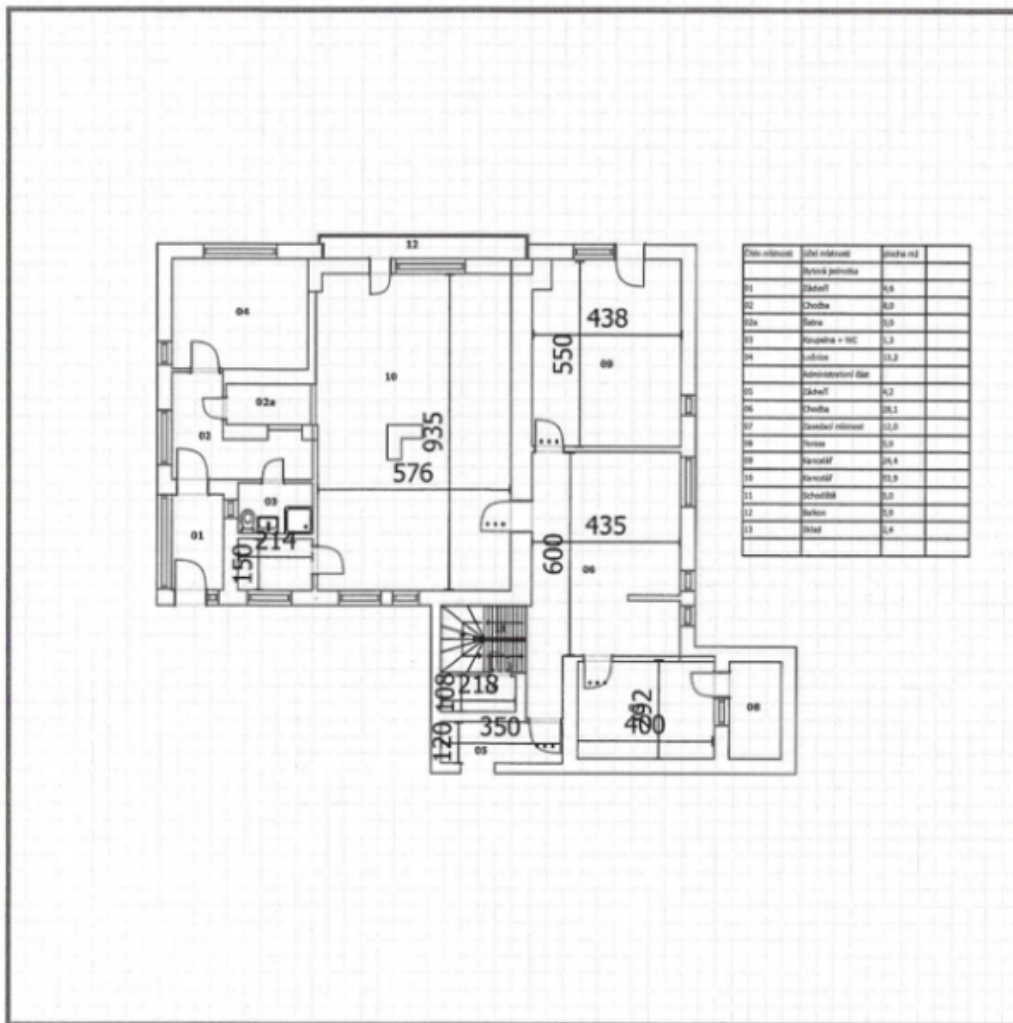
The villa is located on a southern hillside in a residential area in Prague 5-Hlubočepy near Dívčí hrady and Prokopské údolí. The bus stop Žvahov and the train stop Prague-Žvahov are both within 5-10 minutes walking-away. The nearest metro station is Smíchovské nádraží.

Features and Services:

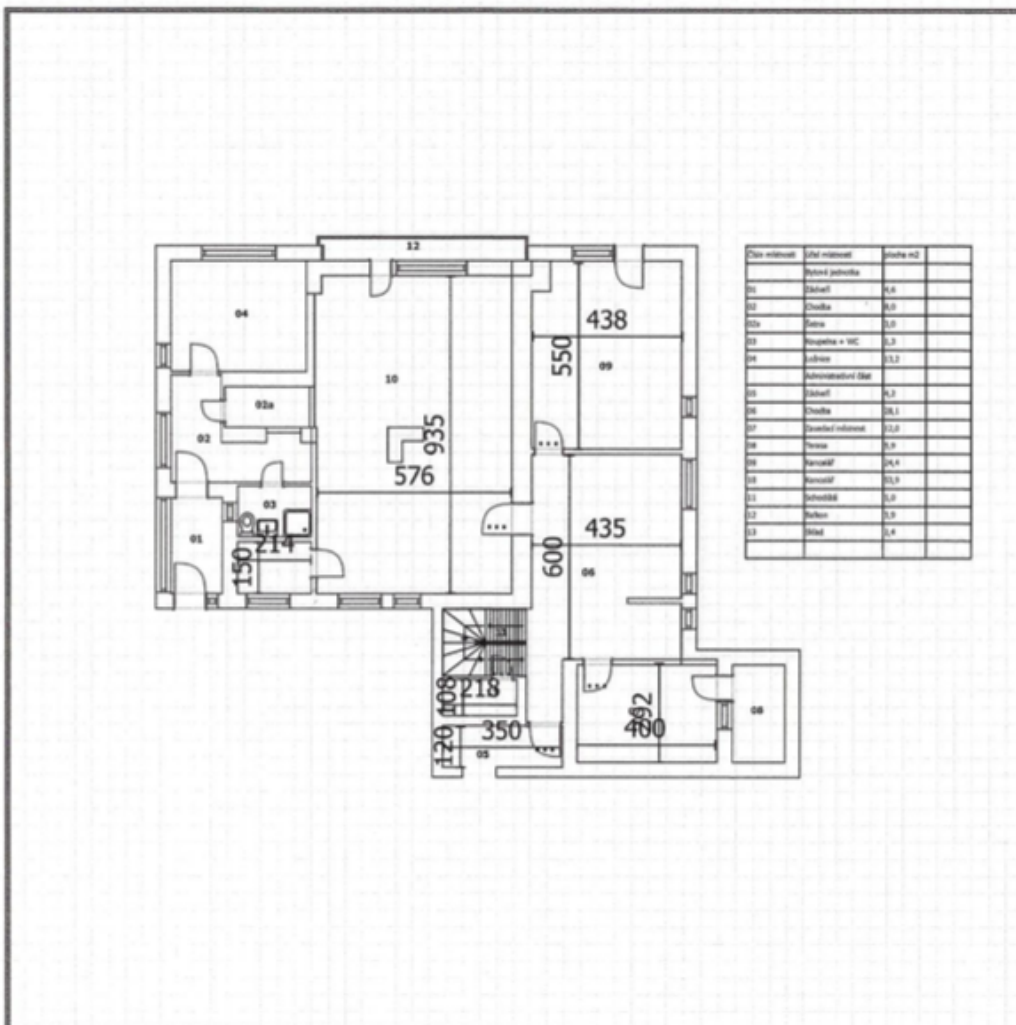
- Air conditioners
- Openable windows
- Garden
- Kitchenettes
- Dog friendly
- Carpets
- Lowered ceilings
- Parking in paid zones
- Storage areas
- Shower, toilets
- Maintenance facilities
- Internet, optics
- Gas boiler
- Server room

Rental and service charges listed without VAT. Lessee pays no commission.

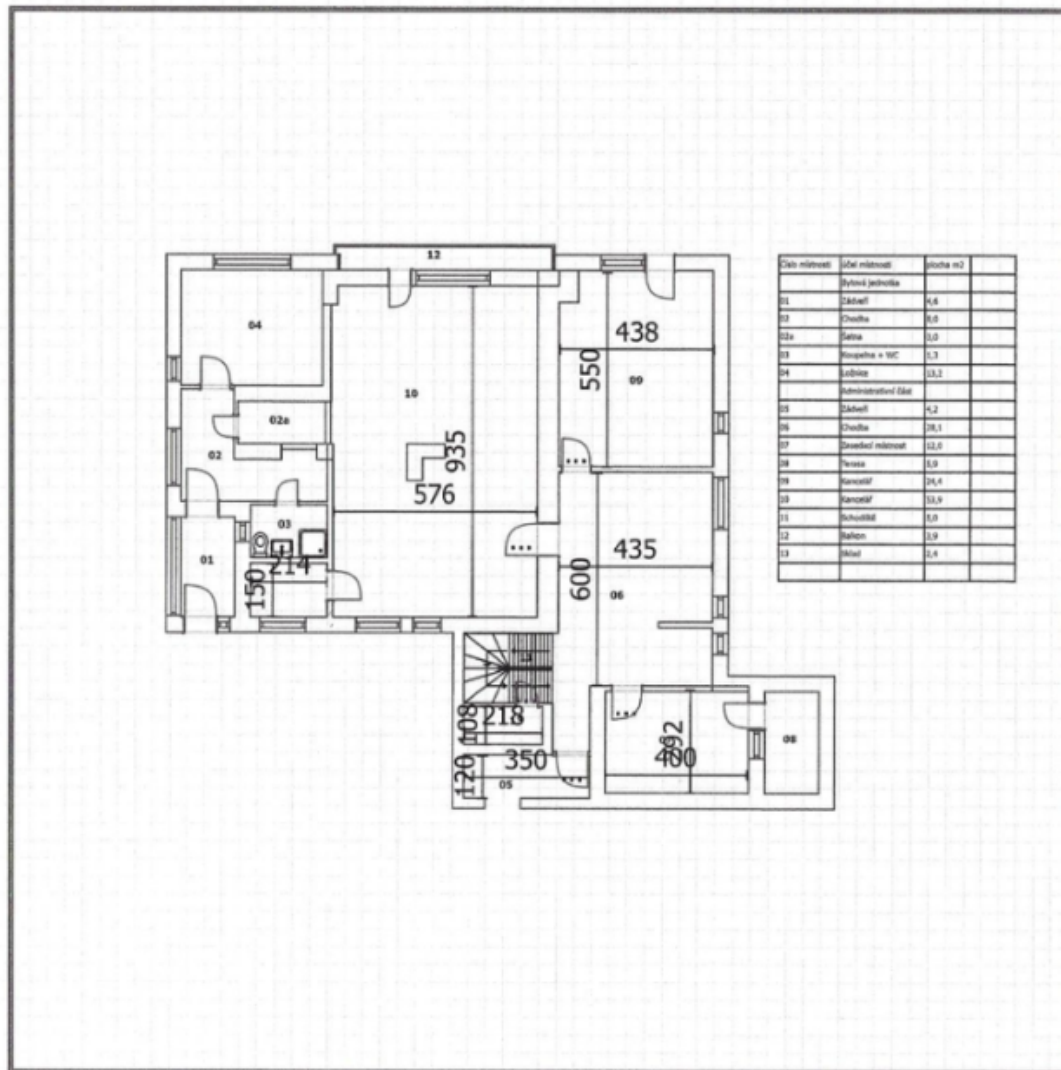




550 cm; 1 : 213,27

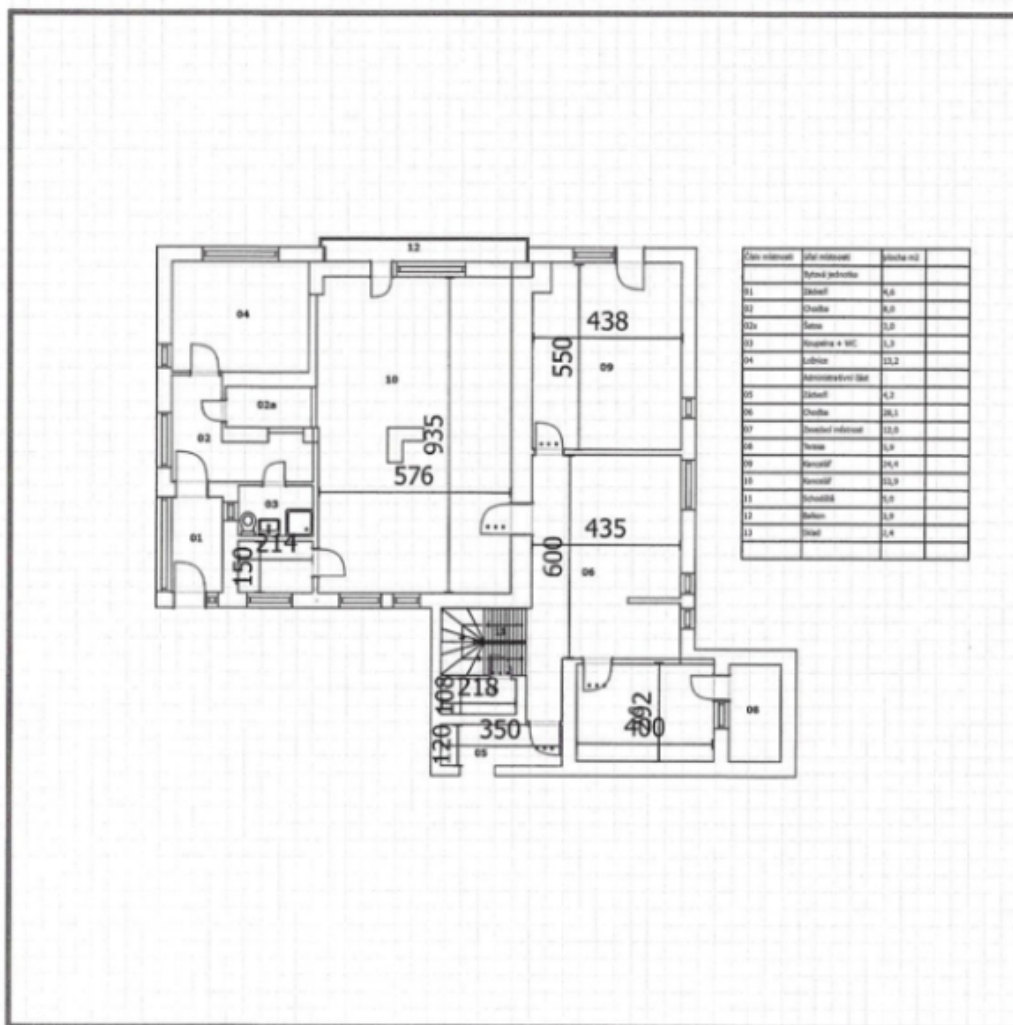


550 cm; 1 : 213,27



| Číslo místnosti | Název místnosti | Plocha m ² |
|-----------------|------------------------|-----------------------|
| 01 | Bytová jednotka | |
| 02 | Čištění | 4,6 |
| 02a | Čištění | 9,8 |
| 03 | Kuchyně + WC | 3,3 |
| 04 | Lokál | 13,2 |
| 05 | Administrativní zájezd | |
| 06 | Čištění | 4,2 |
| 08 | Čištění | 26,1 |
| 09 | Čištění místnosti | 12,0 |
| 10 | Perleť | 9,9 |
| 11 | Kancelář | 24,6 |
| 12 | Kancelář | 13,9 |
| 13 | Schůzovní | 6,0 |
| 14 | Hálka | 2,9 |
| 15 | Škola | 2,4 |

550 cm; 1 : 213,27



550 cm; 1 : 213,27