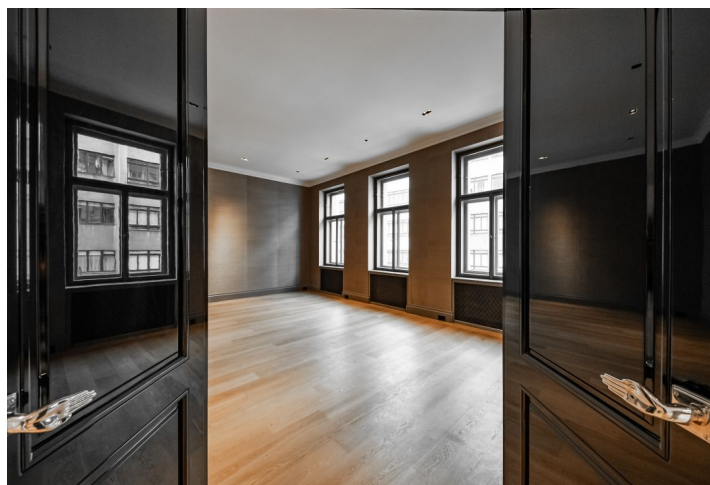
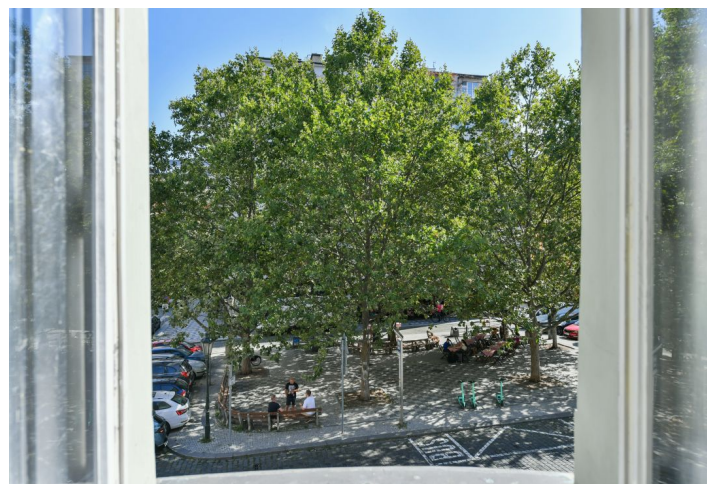
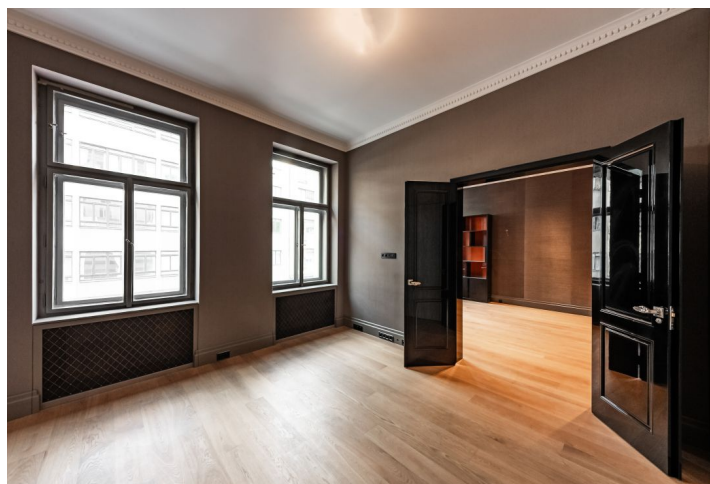




Apartment Five-bedroom (6+1)

Ask for price

196 m², Prague 1, Nové Město, Petřské náměstí





Apartment Five-bedroom (6+1)

[Ask for price](#)196 m², Prague 1, Nové Město, Petřské náměstí

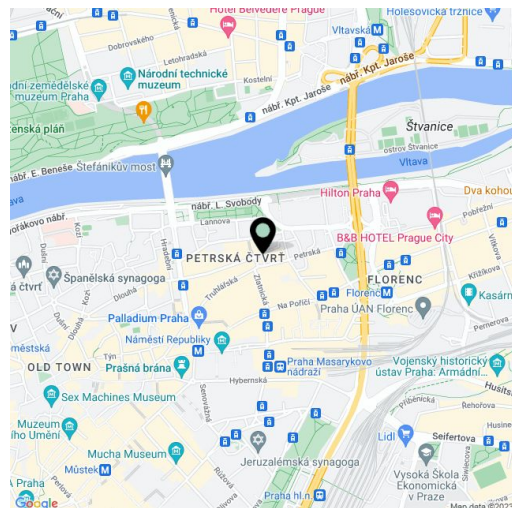
Total area	196 m ²
Parking	-
Cellar	-
Reference number	102560

This meticulously and expensively renovated apartment with a spectacular floor space, high ceilings, and a bold interior design is located on the 1st floor of a historic corner building with a richly decorated facade. An attractive place right in the city center on Petřské Square, which is made even more lovely by mature trees.

The respectable **almost 200 sq. m.** is divided into a walk-through living room, a dining room with a **bay window**, a spacious kitchen, a master bedroom with an en-suite bathroom, 2 additional bedrooms, a study, a central bathroom, a laundry room, a guest toilet, a hallway, and an entrance hall.

The northeast-facing apartment has just been **completely renovated**, the refurbished **casement windows** let in plenty of daylight, **the ceilings of approx. 3.5 m in height** ensure a feeling of freedom. **Floors are made of aged oak with a gray patina**, the interior custom-made doors have **fittings from the English brand Charles Edwards**, the walls of the bay window are decorated with **hand paintings coated with real silver**, and elsewhere **designer fabric wallpaper from the USA**. One of the bathrooms has wall and floor tiles and a marble sink, the other has **slate tiles**. The master bedroom is **air-conditioned**. The interior stands out for its a large amount of **sophisticated built-in furniture**, and the apartment will be handed over with **a new Italian Poliform cucine kitchen**. **The Neo-Renaissance building**, built in 1890-91 according to the designs of architect K. Janda, has a **modern elevator** and newly renovated common areas.

Thanks to its location in the city center, **everything you need is at your fingertips**. The neighborhood is full of cafes, restaurants, small shops, and shopping centers. It is close to a theater, cinema, and galleries, and schools of all grades are within a short walking distance. Excellent transport connections are provided by the nearby Náměstí Republiky and Florenc metro stations, as well as several tram and bus stops. You can find manicured greenery in nearby **Lanova Park**, **the gardens of the St. Agnes Monastery**, or in the vast **Letenské Gardens** on the opposite bank of the Vltava River.

Floor area 195.55 m².

* Size of the unit according to the Housing Act.
The area consists of the sum total of the internal area of every room.

