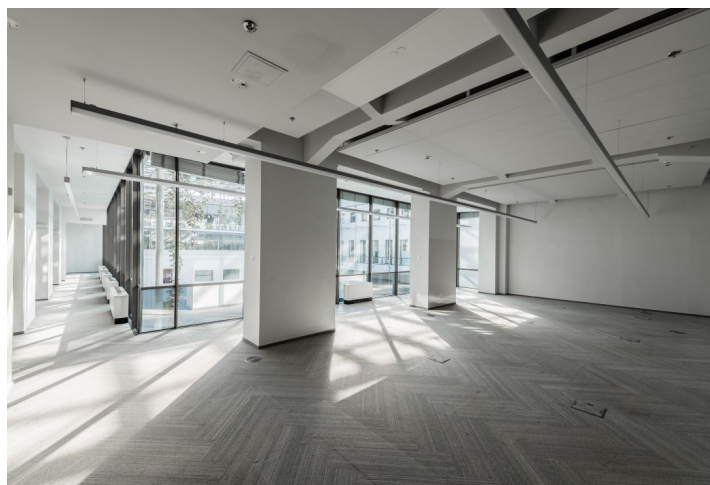
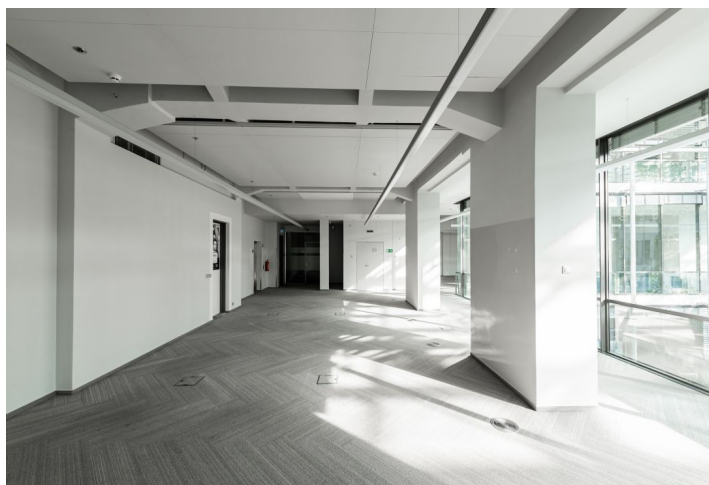
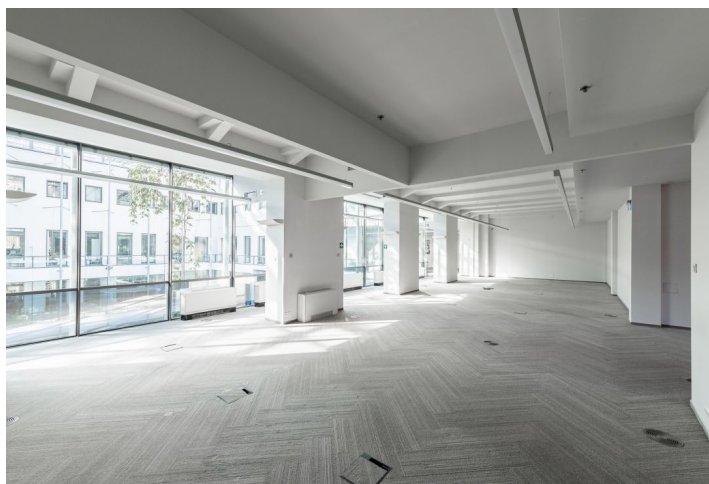
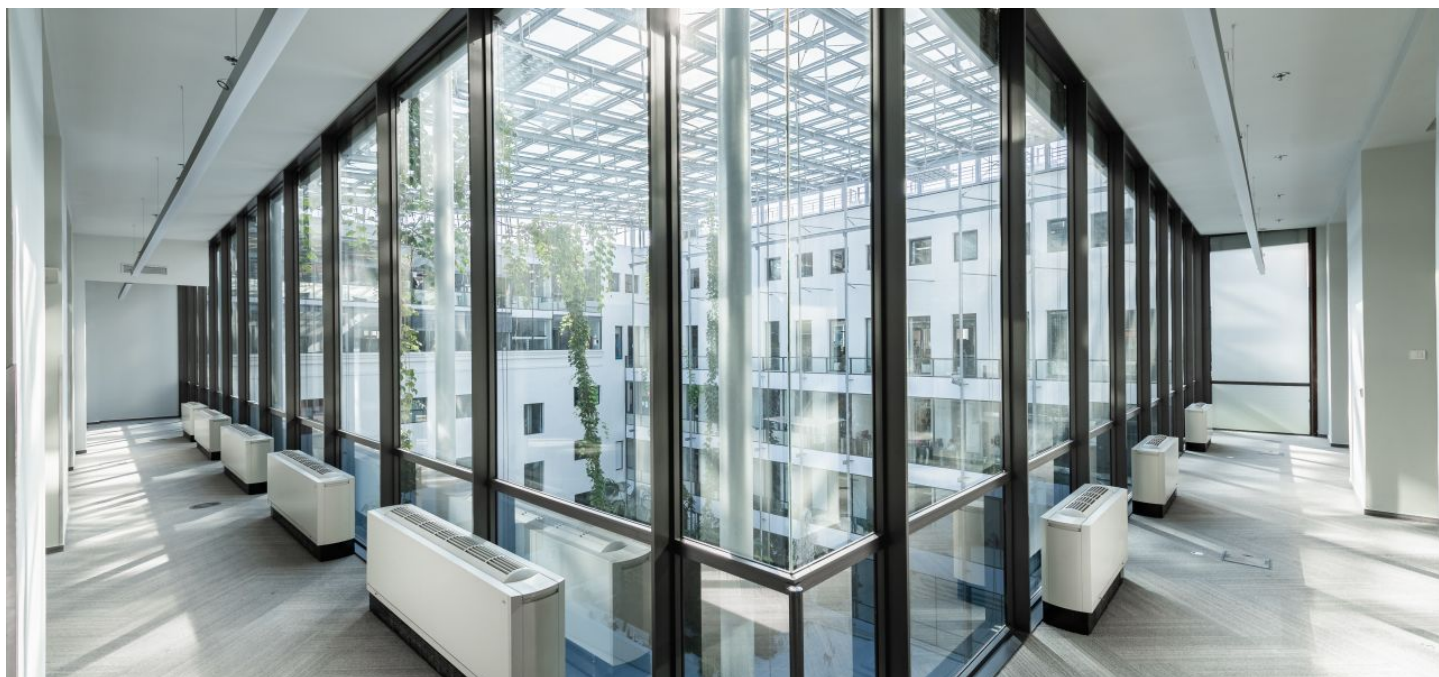




# Office space

Prague 5, Smíchov, Radlická

€ 16.90 / m<sup>2</sup> | CZK 424 / m<sup>2</sup>





## Office space

Prague 5, Smíchov, Radlická

€ 16.90 / m<sup>2</sup> | CZK 424 / m<sup>2</sup>

<b>Service price</b>	110 CZK monthly per m <sup>2</sup>
<b>Available area</b>	434 m <sup>2</sup>
<b>Cellar</b>	-
<b>Parking</b>	EUR 120 / pp / month
<b>PENB</b>	G
<b>Reference number</b>	102601

Modern administrative complex offers high quality office space for lease in Prague 5. The complex consists of a historic building that has undergone a reconstruction and a modern building with many shops and restaurants and a covered atrium in the courtyard. The building is one of the most advanced intelligent buildings in Prague with a fully integrated and centralized management system controlling security, access, lighting and energy.

### Location:

The building is within walking distance of the Anděl metro station (line B) and shopping zone. The offices are very easily accessible by car and public transportation, with a number of tram stops, a bus and train station.

### Features and Services:

- Central receptions in historic and modern building
- Security service 24/7
- Lifts
- Magnetic card access
- Air-conditioning
- Partly openable windows
- Heavy duty carpets
- Equipped kitchenettes
- Underground parking

Rental and service charges listed without VAT. Lessee pays no commission.

