



House Eight-bedroom (9+1)

Ask for price

367 m², Spišská Stará Ves





House Eight-bedroom (9+1)

[Ask for price](#)367 m², Spišská Stará Ves

Plot	4 801 m ²
Foot print	367 m ²
Parking	Yes
Cellar	Yes
PENB	G
Reference number	102826

We exclusively offer for sale this traditional mountain home known as Homestead Pieniny. On its large landscaped grounds sits a spacious family house with spectacular views of a forest, a stylish wooden chalet with an attic, and an outbuilding. The homestead is situated in a beautiful green and absolutely quiet location a stone's throw from Pieniny National Park.

The estate consists of a family house and a stylish wooden chalet. The large country-style house has a ground floor with an entrance hall, a large fully equipped kitchen with a pantry, a living room with a ceramic stove, and a large lounge with a fireplace and amazing views. On the opposite side of the kitchen are two toilets, a cloakroom, and a utility room. From the living room, a beautiful wooden staircase leads to the 1st floor, which consists of 5 spacious bedrooms with en-suite bathrooms (shower, sink, and toilet). Next to the house is an outdoor toolshed. The estate has its own driveway with parking below the house.

The wooden chalet is designed in a traditional alpine style and is used as a retreat with a chalet with a wellness area (booking.com rating of 9.8). The chalet consists of a large living room with access to the terrace through large sliding doors and to the sauna overlooking the forest. Right by the entrance, there is a staircase to the first floor with a gallery, where there is space for two large beds. There is a spacious wooden terrace with a whirlpool Jacuzzi. The entire log cabin is heated by a single fireplace.

The main building is a new construction using high-quality materials. The windows, doors, and floors are made of high-quality wood. Heat is provided by a Viesmann gas boiler and a fireplace with a vent to the upper floor, the lower floor outside the rooms has underfloor heating. The hot water is circulated. The whole house has a LAN network. The log cabin has a Canadian spline 24 KW fireplace. The entire homestead is surrounded by a large fenced property with trees, an outbuilding, and a small playground.

This very quiet place in the heart of nature is ideally located on the outskirts of a town enveloped by woods. The homestead offers the opportunity to relax in the beautiful nature of the Pieniny Mountains. Nearby is a bus stop, and by car you can reach Pieniny National Park, as well as the High Tatras, in a few minutes. The town is full of amenities and the nearest larger town is Kežmarok or Stará Lubovňa. The surrounding area is varied and interesting—you can visit the nearby spa or cultural monuments (castle, chateau, or museum). There is also a number of excellent restaurants and cafés where you can enjoy traditional Slovak cuisine. Spišská Stará Ves lies on the border with Poland.



House Eight-bedroom (9+1)

Ask for price

367 m², Spišská Stará Ves

Plot	4 801 m ²
Foot print	367 m ²
Parking	Yes
Cellar	Yes
PENB	G
Reference number	102826

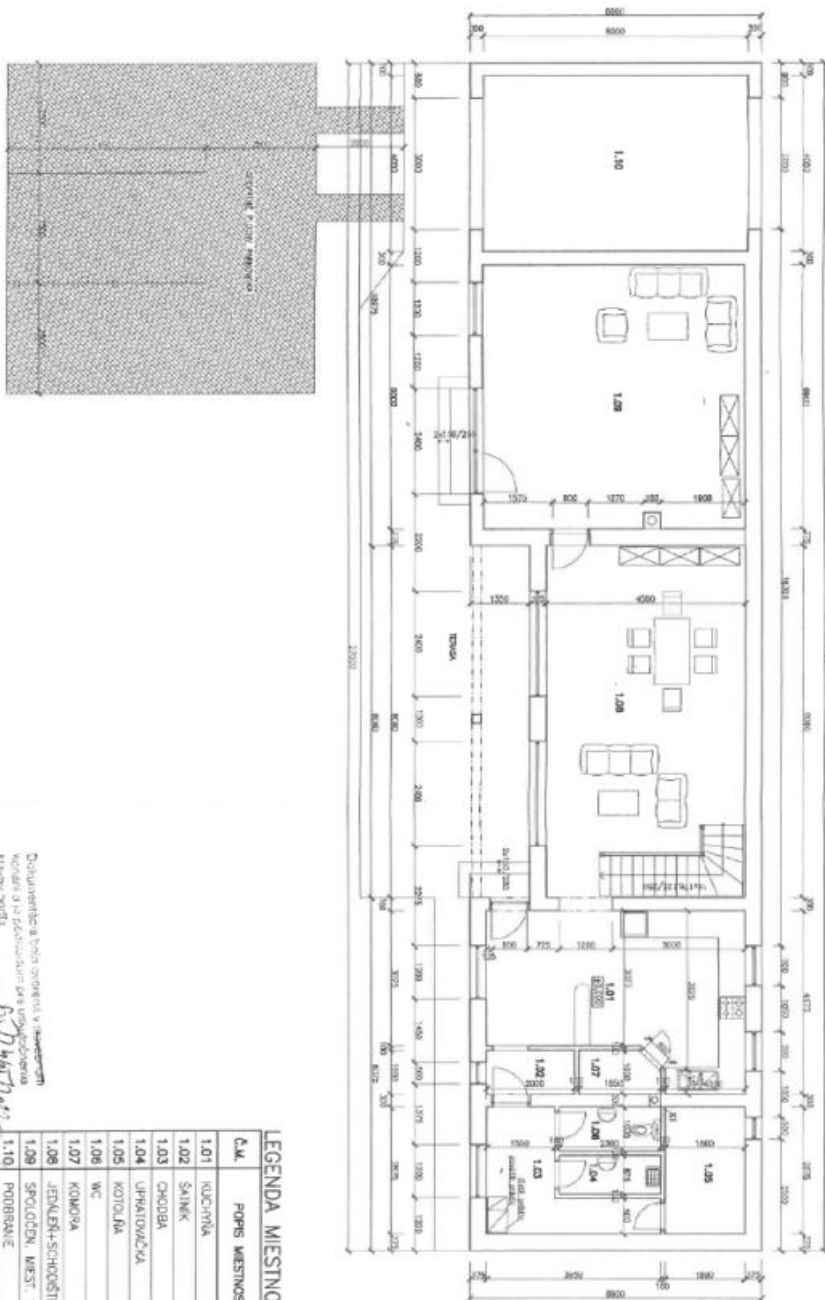
The usable area of house 241 m² (built-up area 184 m²), chalet 58 m² (built-up area 127 m²), outbuilding 42 m², garden gazebo 14 m², land total 4,801 m².
Without further remodeling, the homestead offers up to 14 beds.



House Eight-bedroom (9+1)

367 m², Spišská Stará Ves

Ask for price



Handwritten notes:
 Dokumentácia bola overená v Bratislave
 dňa 19.12.2019
 807/14/2019
 20 dňa

X1 VETRAČIE POTRUBIE VVEDENÉ NAD STREŠNÝM PLOŠŤ

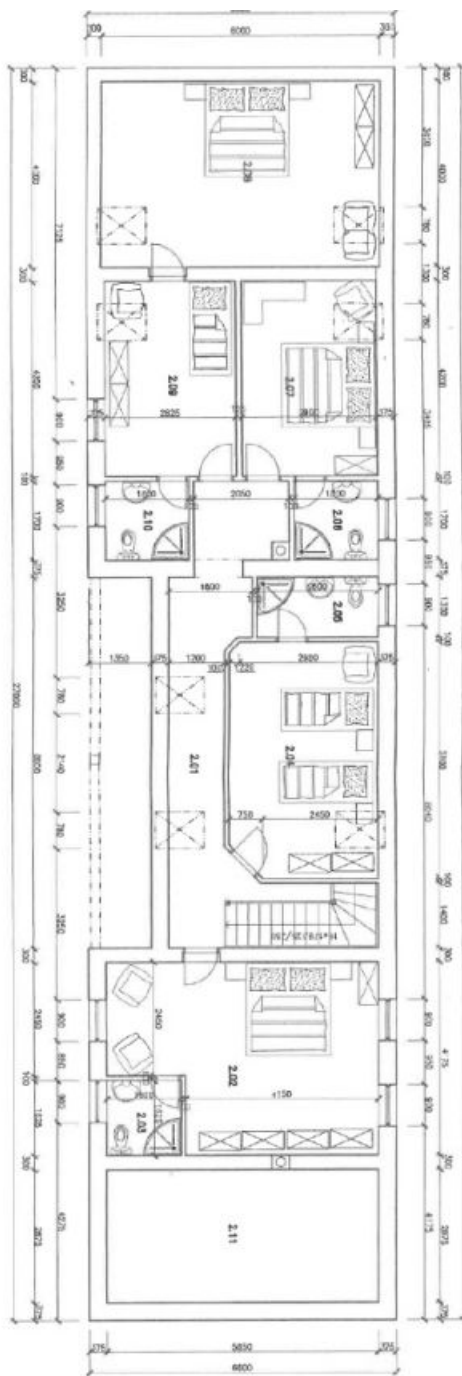
Č.Č.	POPIS MIESTNOSTI	PLOCHA m ²	PODLAHA	STĚNY
1.01	KUCHYŇKA	20,12	KERAMICKÁ DLAŽBA SI	KLADIA GYPSA PRISYŠK SYLIK PRISYŠK SYLIK
1.02	SÁLNIK	2,00	KERAMICKÁ DLAŽBA SI	KERAMICKÁ DLAŽBA SI
1.03	CHODBA	6,40	KERAMICKÁ DLAŽBA SI	KERAMICKÁ DLAŽBA SI
1.04	UPRAVDIACIVA	2,00	KERAMICKÁ DLAŽBA SI	KERAMICKÁ DLAŽBA SI
1.05	KOTOLNA	5,20	KERAMICKÁ DLAŽBA SI	KERAMICKÁ DLAŽBA SI
1.06	WC	2,30	KERAMICKÁ DLAŽBA SI	KERAMICKÁ DLAŽBA SI
1.07	KOMORA	1,70	KERAMICKÁ DLAŽBA SI	KERAMICKÁ DLAŽBA SI
1.08	JEDLEŇA-SCHODIŠTE	36,00	DREVENIA PODLAHA SI	KERAMICKÁ DLAŽBA SI
1.09	SPOLOČEN. MIEST. S KREBIV	35,60	DREVENIA PODLAHA SI	KERAMICKÁ DLAŽBA SI
1.10	PODPRÁVIE	24,00	LAAMANT KAMEN	SI



House Eight-bedroom (9+1)

367 m², Spišská Stará Ves

Ask for price



Handwritten notes and signatures, including the name 'M. K. K. K.' and a date '2024.08.28'.

X1 VETRAČIE POTRUBIE VYVEDENÉ NAD STREŠNÝ PLOŠŤ

Č.M.	POPIS MIESTNOSTI	PLOCHA m ²	OPŤMA POKRYTÍ	STĚNY
2.01	CHODBA+SCHODISŤE	15,43	DREVENÁ PODLAHA	HLADKÁ OBIETKA
2.02	IŽBA	21,50	DREVENÁ PODLAHA	HLADKÁ OBIETKA
2.03	KOPELŇA/WC	2,66	KERAMICKÁ DLAŽBA	HLADKÁ OBIETKA
2.04	IŽBA	15,06	DREVENÁ PODLAHA	HLADKÁ OBIETKA
2.05	KOPELŇA/WC	3,43	KERAMICKÁ DLAŽBA	HLADKÁ OBIETKA
2.06	KOPELŇA/WC	3,10	KERAMICKÁ DLAŽBA	HLADKÁ OBIETKA
2.07	IŽBA	12,20	DREVENÁ PODLAHA	HLADKÁ OBIETKA
2.08	IŽBA	24,30	DREVENÁ PODLAHA	HLADKÁ OBIETKA
2.09	IŽBA	11,90	DREVENÁ PODLAHA	HLADKÁ OBIETKA
2.10	KOPELŇA/WC	3,10	KERAMICKÁ DLAŽBA	HLADKÁ OBIETKA
2.11	POVALOVÝ PRIESTOR	16,80	DREVENÁ PODLAHA	HLADKÁ OBIETKA