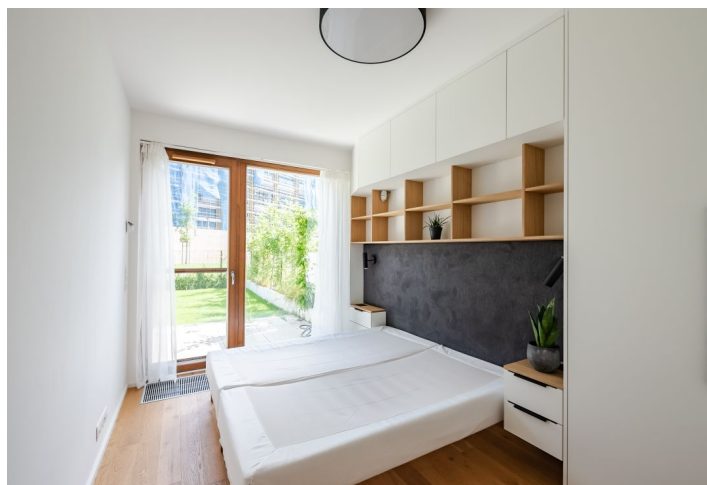




## Apartment Two-bedroom (3+kk)

Rented

78.4 m<sup>2</sup>, Praha 5, Košíře, Naskové





## Apartment Two-bedroom (3+kk)

Rented

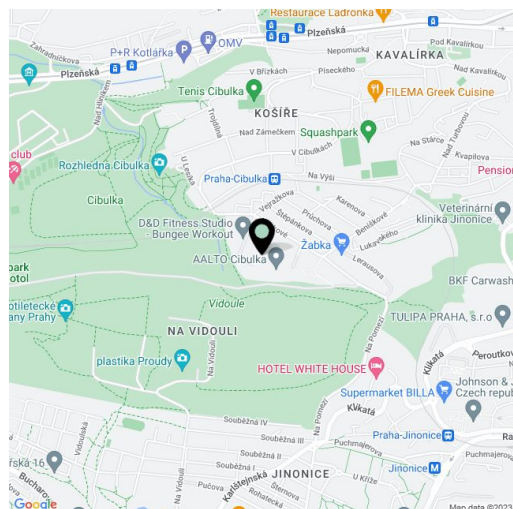
78.4 m<sup>2</sup>, Praha 5, Košíře, Naskové

|                  |   |
|------------------|---|
| Total area       | 78 m <sup>2</sup>   |
| Front garden     | 88 m <sup>2</sup>   |
| Parking          | Parking in the underground garage.  |
| Garage           | Yes   |
| Cellar           | Yes   |
| Service price    | Monthly deposit for services, water, and heating: CZK 6,000. Electricity will be transferred to the tenant. |
| PENB             | B   |
| Reference number | 102835  |
| Available from   | Immediately   |

This fully furnished apartment designed by an architect with high standard equipment, 2 front gardens and parking, is on the ground floor of the new Aalto Cibulka residence, in a quiet part of Prague 5 surrounded by greenery. The project with a private green courtyard with a children's playground and water features stands on the edge of a natural forest park, in a location with many opportunities for sports and relaxation, with a sports center, tennis courts, and a golf course nearby. The complex has its own entrance to a forest. The busy Anděl intersection with many shops and restaurants is 10 minutes away by car and 15 minutes by public transport. There is a bus stop on Nasková Street.

The interior features a living room with a fully fitted open plan kitchen, a study area, and access to a **covered terrace and front garden**, 2 northeast-facing bedrooms with access to a second **terrace with a front garden**, a bathroom, a toilet, a storage/utility room, and an entrance hall. In the front garden, there is a garden house for storing equipment.

**Premium furniture that was custom-made by an architect, hardwood floors, tiles, built-in wardrobes and storage in the hall and bedrooms, windows with remote-controlled (via Wi-Fi) motorized Somfy outdoor blinds with an automatically programmable light sensor and insect screens, LED lights and Nordlux lamps, built-in top-of-the-line range Siemens Wi-Fi appliances, microwave oven, steam oven, induction hob, dishwasher, wine fridge, artificial stone counter in the bathroom, alarm, cellar. A garage parking space is included.**



\* Area of the unit according to the Civil Code. The area consists of the sum total area of the entire unit bounded by perimeter walls.





## Apartment Two-bedroom (3+kk)

Rented

78.4 m<sup>2</sup>, Praha 5, Košíře, Naskové

