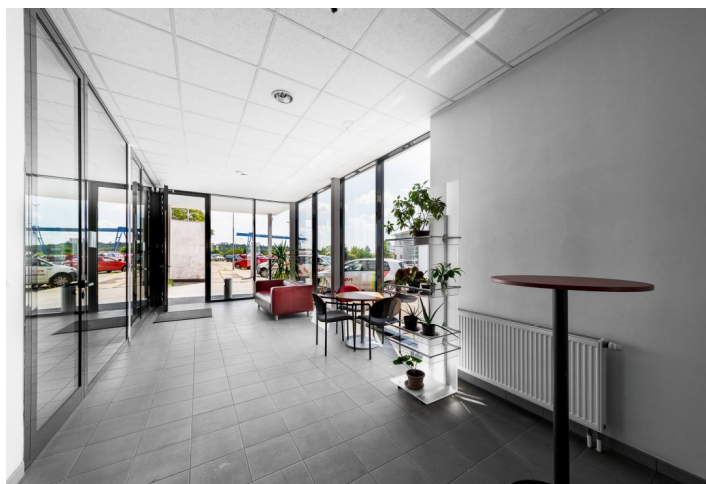




Office space

Brno, Maloměřice, Hády

Ask for price





Office space

Brno, Maloměřice, Hády

[Ask for price](#)

Available area	808 m ²
Cellar	-
Terrace	80 m ²
Parking	-
PENB	A
Reference number	102932

Office space for lease on the 3rd floor in this commercial complex located in the Hády. The building has a reception, 24-hour security, CCTV, air-conditioning with heating, and is wheelchair accessible. A large handling area allows for the entry and parking of cars and trucks. A training center can be leased in the basement of the building.

The office building offers a total of 3, 601 sq. m for lease (ground floor to 4th floor). Each floor has its own kitchenette, storage room, and copy room. On the 4th floor, there is a possibility to use an outdoor terrace of 80 sq. m. There are also workshops of 920 sq. m, warehouses of 633 sq. m, and land of 13,145 sq. m.

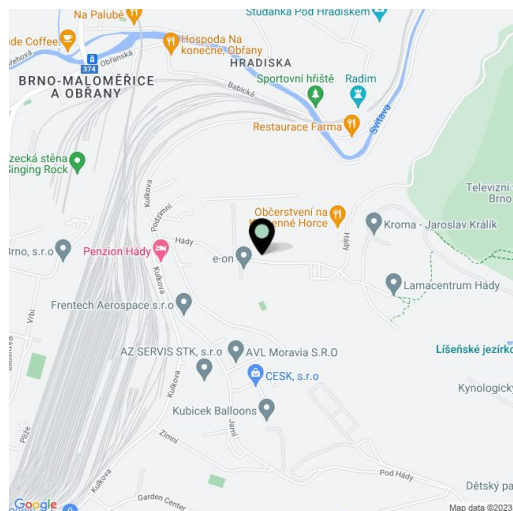
Location:

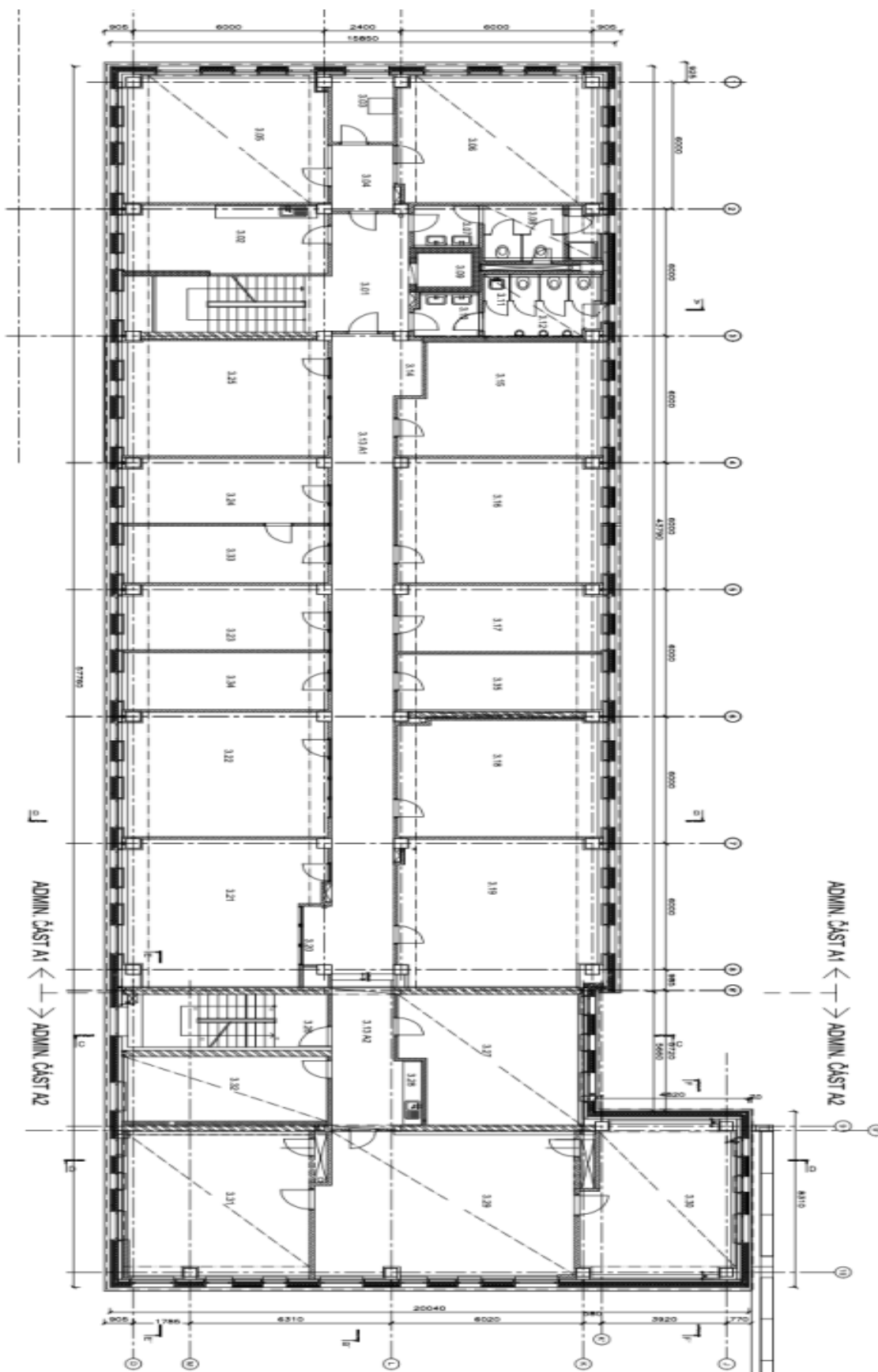
Excellent transport accessibility by car and public transport. The Červený Písek bus stop is right in front of the complex. The city center is about 17 minutes away by car.

Features and services:

- Reception
- 24/7 security
- Camera system
- Air-conditioning
- Heating
- Wheelchair access
- Load-bearing carpets
- Exterior blinds
- LED energy saving lighting with dimmable lighting intensity control
- Fire detectors

Rental and service charges listed without VAT. Lessee pays no commission.



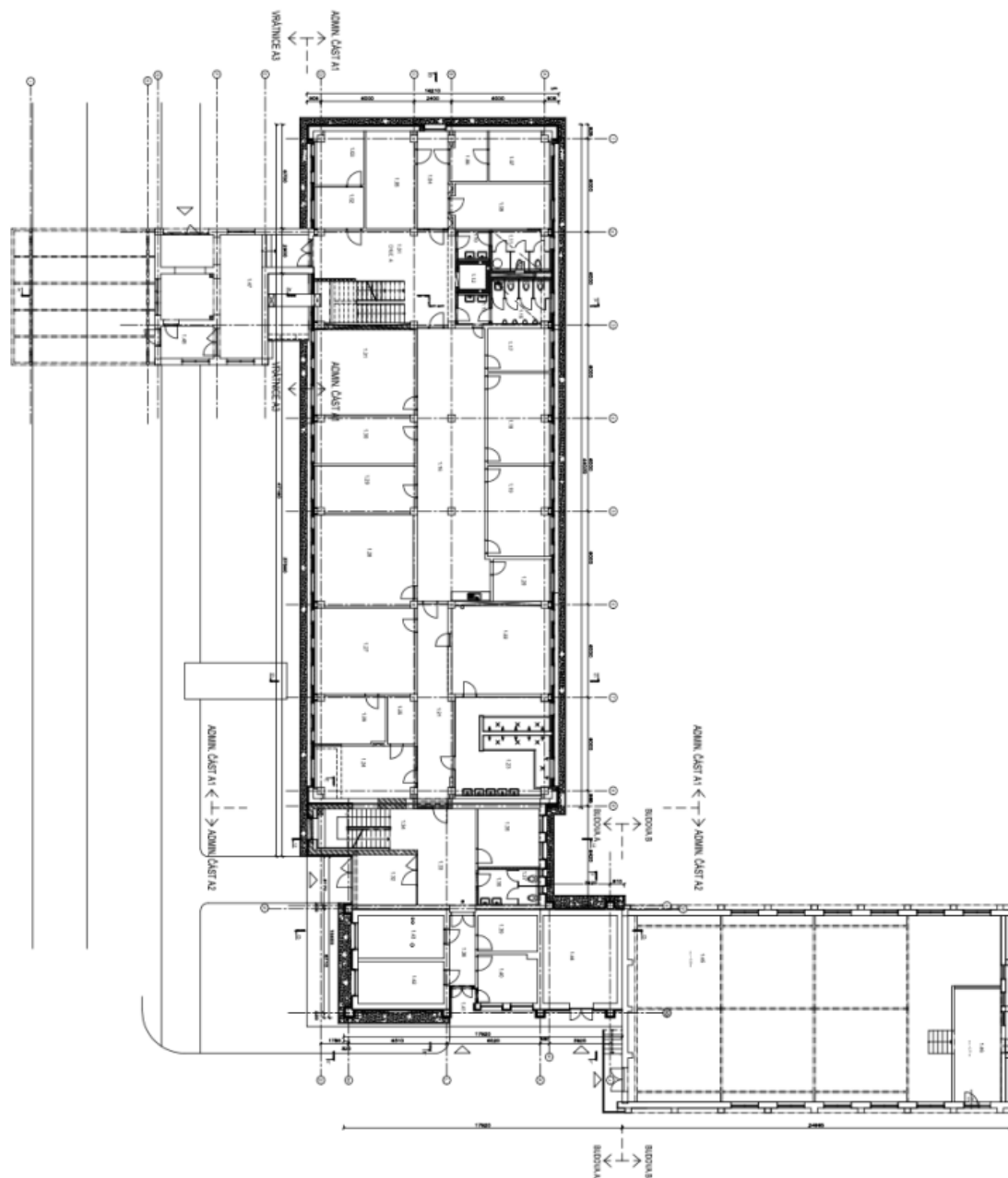


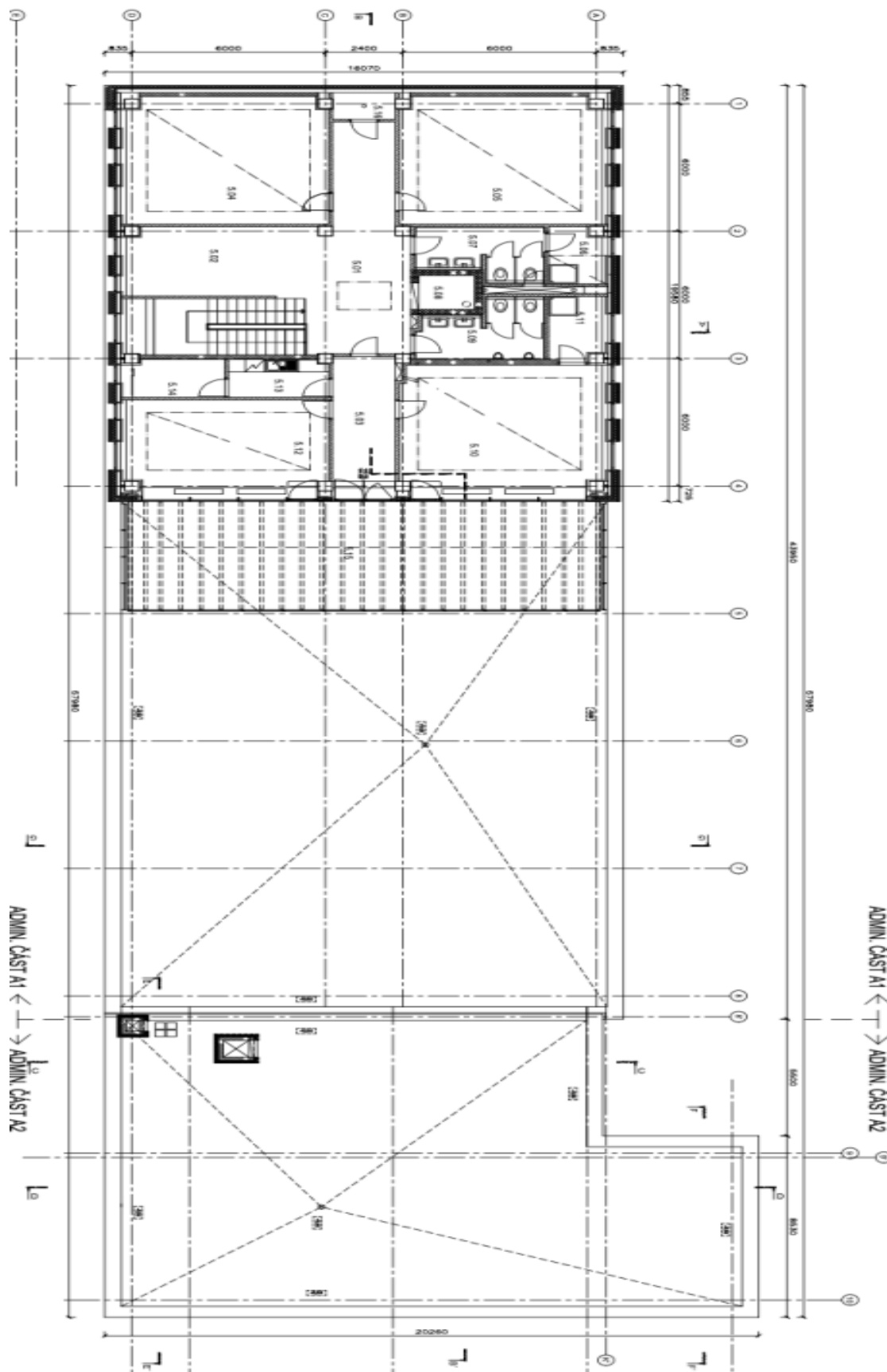


Office space

Brno, Maloměřice, Hády

Ask for price



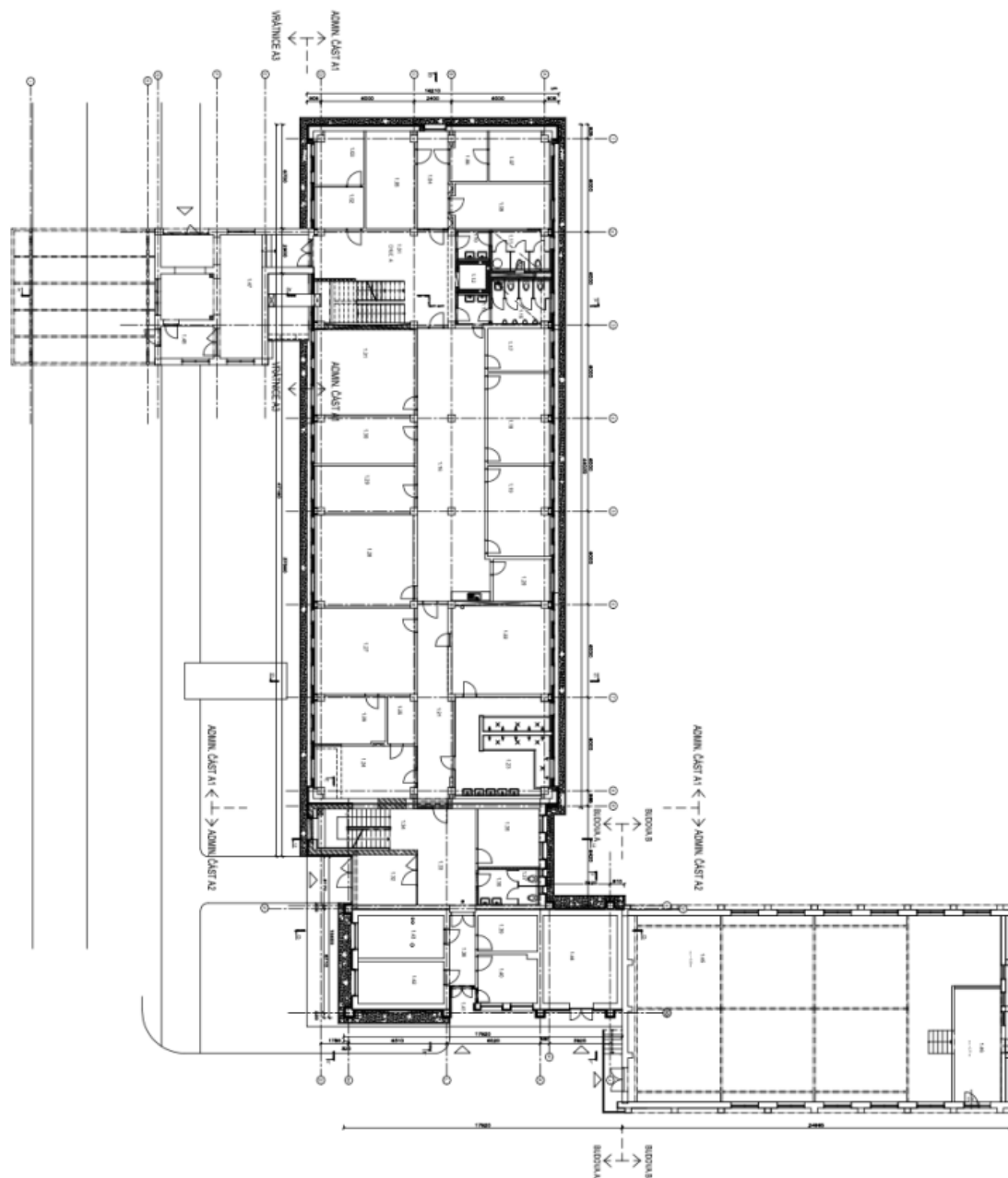




Office space

Brno, Maloměřice, Hády

Ask for price





Office space

Brno, Maloměřice, Hády

Ask for price

