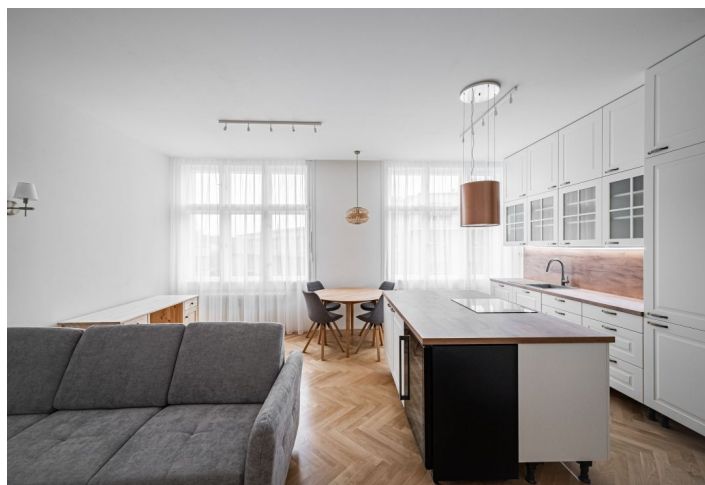
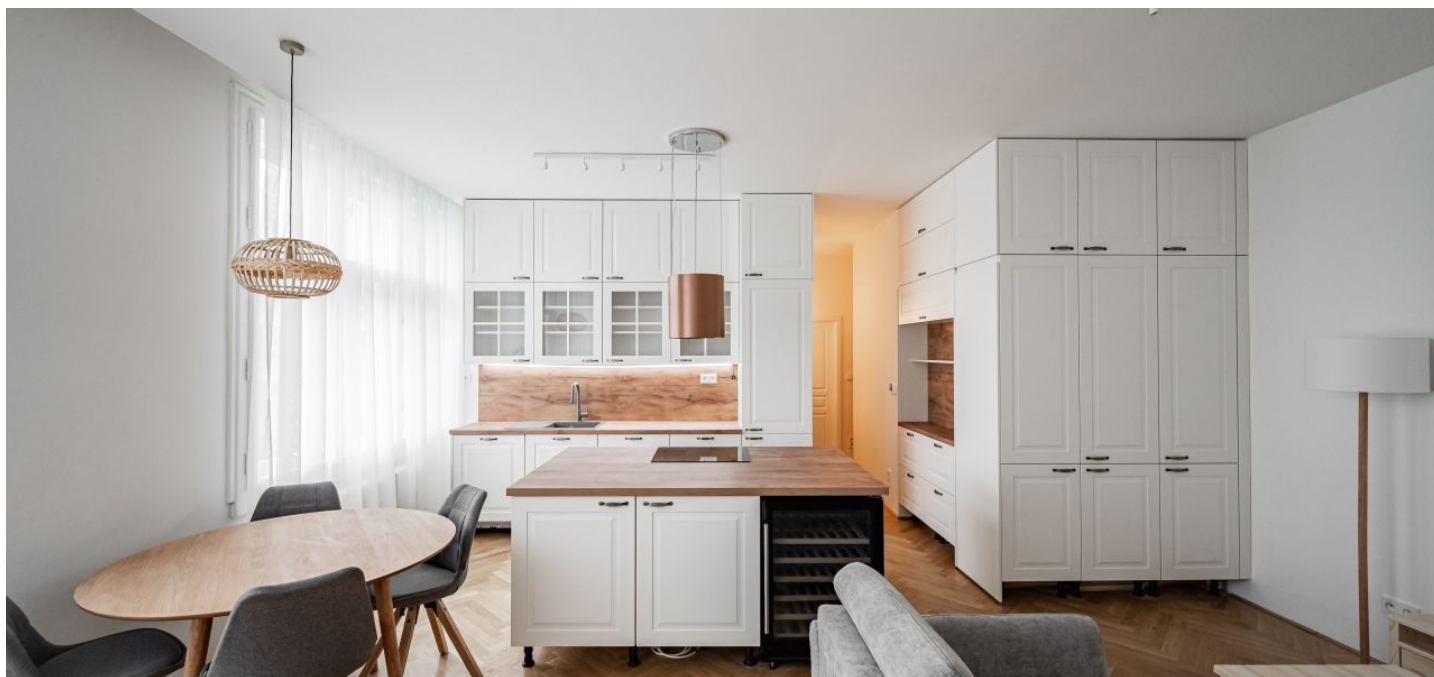




Apartment One-bedroom (2+kk)

Rented

62 m², Prague 7, Holešovice, Na ovčínách





Apartment One-bedroom (2+kk)

Rented

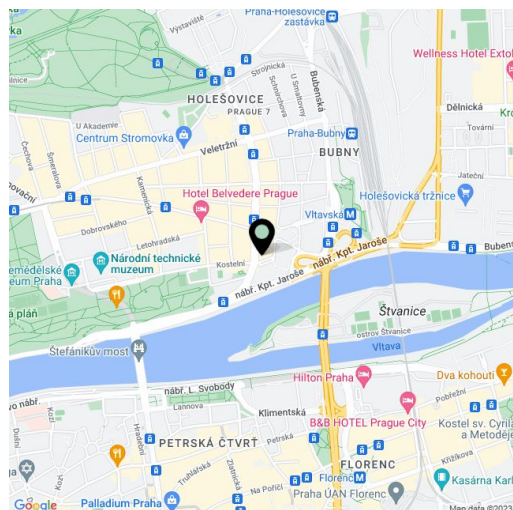
62 m², Prague 7, Holešovice, Na ovčínách

Total area	62 m ²
Parking	-
Cellar	Yes
Service price	Monthly deposit for service charges, water, and heating CZK 3,800 for one person, and for another person CZK 900 extra. Electricity is paid separately.
PENB	G
Reference number	103038
Available from	01.02.2025

Conveniently located just minutes from Letná Park, this is a completely renovated furnished 1-bedroom apartment, on the 4th floor of a well kept Functionalist building with a lift. With quick connections to the airport, several international schools, and the city center (ten min. on foot, one tram stop), the popular Letná neighborhood offers a full spectrum of amenities and lots of sports and leisure facilities. Vltavská metro station is within walking distance.

The sunny apartment includes a living room with a fully fitted open plan kitchen and a dining area, a bedroom with a **walk-in closet**, a shower room, a separate toilet, an additional **walk-in closet**, and an entrance hall with a built-in wardrobe.

New **hardwood parquet floors**, tiles, large windows, ample built-in storage space, **smart home system**, central heating, dishwasher, induction cooktop, wine fridge, **cellar**. Available from mid November 2023 (or earlier). The presentation includes visualizations of the apartment with potential furnishings.



* Size of the unit according to the Housing Act.
The area consists of the sum total of the internal area of every room.



Apartment One-bedroom (2+kk)

Rented

62 m², Prague 7, Holešovice, Na ovčínách

