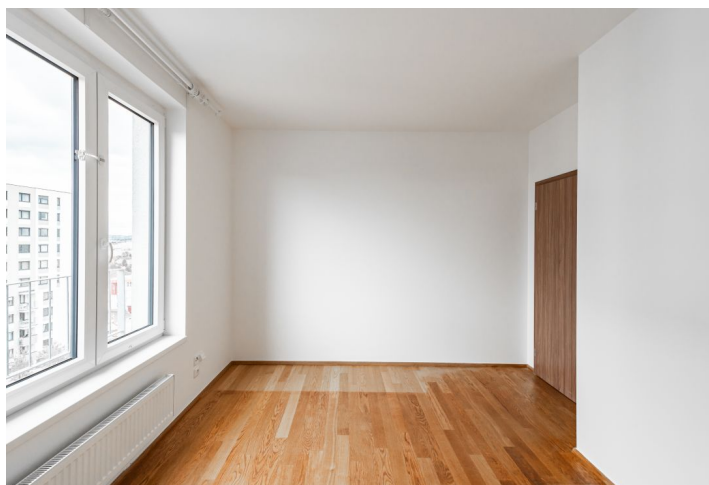




## Apartment Three-bedroom (4+kk)

Rented

90 m<sup>2</sup>, Prague 10, Horní Měcholupy, Padovská





## Apartment Three-bedroom (4+kk)

Rented

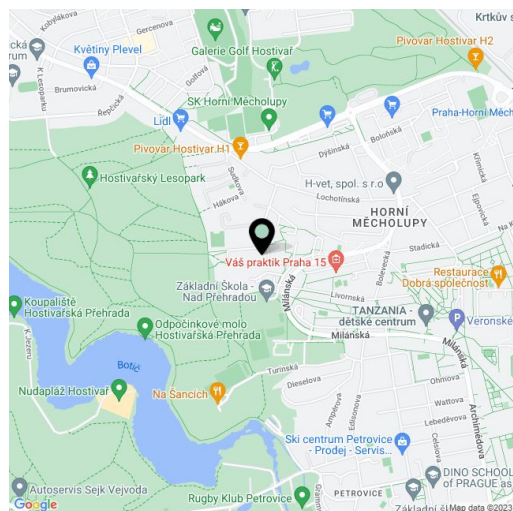
90 m<sup>2</sup>, Prague 10, Horní Měcholupy, Padovská

Total area	102 m <sup>2</sup>
Floor area*	90 m <sup>2</sup>
Terrace	12 m <sup>2</sup>
Parking	Garage parking.
Garage	Yes
Cellar	-
Service price	Monthly deposit for services, water, and heating: CZK 6,500. Electricity is billed separately.
PENB	B
Reference number	103047
Available from	Immediately

This bright southeast-facing unfurnished apartment with a sunny terrace, impressive views of the distant surroundings, and parking is set on the 5th floor of a building that is part of a modern residential complex in the vicinity of the Hostivař forest park in the Horní Měcholupy district with complete amenities. Located next to a vast forest park with children's playgrounds, bike and hiking trails, a beach, tennis courts, and a twelve-hole golf course. It only takes 10 minutes to get to the Háje metro station by bus, and direct bus connections also go to the Skalka metro station and to Černý Most. There is a railway station within easy reach, from where you can get to the city center in no time. By car, you can quickly connect to the D1 highway and the Prague Ring Road.

The interior features a living room with a fully fitted open plan kitchen, dining area, and access to a south-facing covered terrace, 3 bedrooms (with east-facing windows), a bathroom (bathtub, toilet), a separate guest toilet, a walk-in closet, and an entrance hall.

Hardwood floors, tiles, wooden interior doors, plastic double-glazed windows, central heating, elevator. A garage parking space is included in the rent. The residents can use an enclosed playground from which you can walk directly to a park or to an elementary school. The property also includes a barbecue area.



\* Area of the unit according to the Civil Code. The area consists of the sum total area of the entire unit bounded by perimeter walls.



## Apartment Three-bedroom (4+kk)

Rented

90 m<sup>2</sup>, Prague 10, Horní Měcholupy, Padovská

