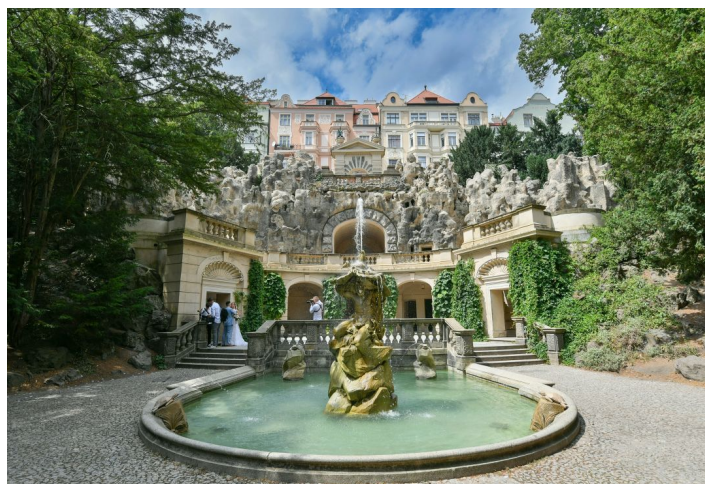




Apartment One-bedroom (2+kk)

Rented

48 m², Prague 2, Vinohrady, U Havlíčkových sadů





Apartment One-bedroom (2+kk)

Rented

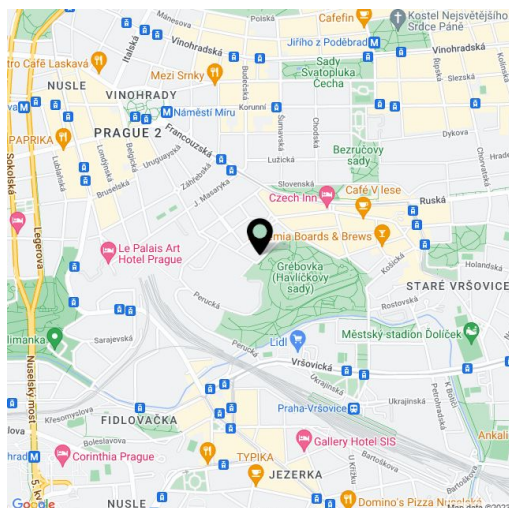
48 m², Prague 2, Vinohrady, U Havlíčkových sadů

Total area	48 m ²
Parking	-
Cellar	-
Service price	Monthly deposit for services and water: CZK 1,000 for one person. Gas and electricity are billed separately (transferred to the tenant).
PENB	G
Reference number	103050
Available from	Immediately

This tastefully and thoroughly renovated unfurnished apartment is on the upper ground floor in an Art Nouveau building set on one of the most beautiful streets in Vinohrady, mere steps from romantic Grébovka Park. An excellent address right next to the upper entrance to the park arranged in an English style allows you to get to everything you need in no time. Nearby there is an outdoor gym, shops, restaurants, and several cafes. A tram stop is about a 5-minute walk away, and the Náměstí Míru metro station is also within walking distance.

The interior consists of a south-facing living room with a fully fitted open plan kitchen overlooking a park, a north-facing bedroom with a walk-in closet, small storage room, and window facing a quiet courtyard with a garden, a bathroom with a bathtub and toilet, a utility room, and an entrance hall. The windows of the apartment are at a height of more than 2 m from the sidewalk.

Hardwood parquet floors, tiles, high ceilings, casement windows, gas boiler, dishwasher, induction hob, combination (microwave) oven.



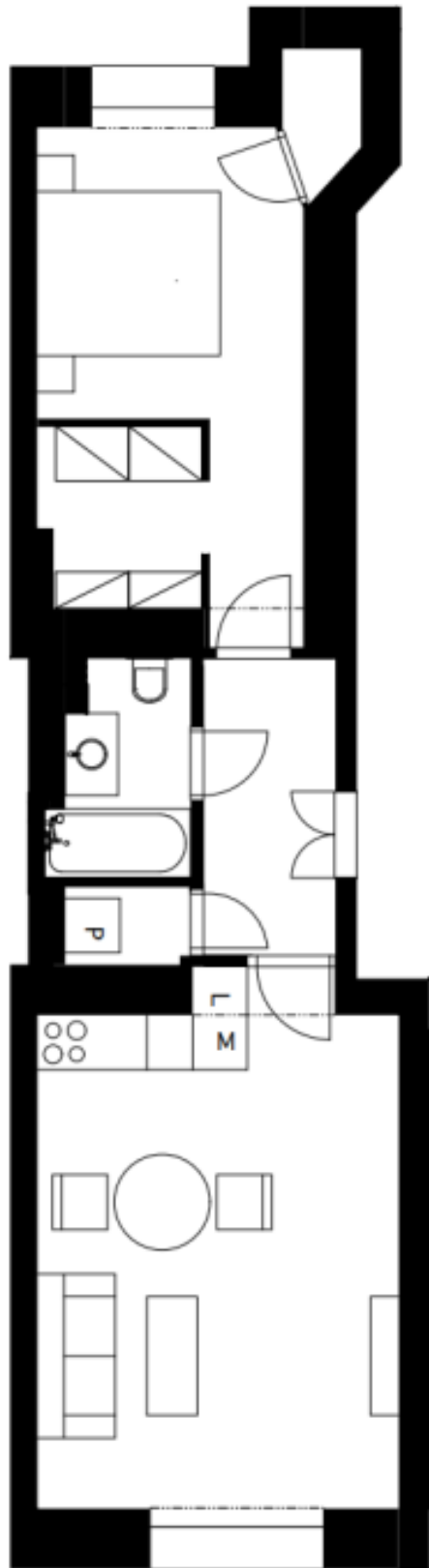
* Area of the unit according to the Civil Code. The area consists of the sum total area of the entire unit bounded by perimeter walls.



Apartment One-bedroom (2+kk)

Rented

48 m², Prague 2, Vinohrady, U Havlíčkových sadů





Apartment One-bedroom (2+kk)

Rented

48 m², Prague 2, Vinohrady, U Havlíčkových sadů

Byt	
Obývací pokoj s kuchyní	21,4 m ²
Chodba	4,8 m ²
Komora	1,2 m ²
Koupelna	3,3 m ²
Ložnice se šatnou	15,5 m ²
Komora	1,2 m ²
Celkem	47,4 m²

