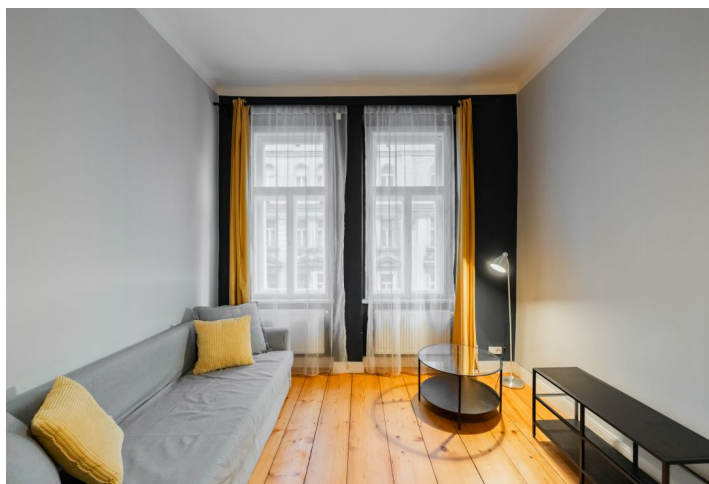




## Apartment One-bedroom (2+kk)

Sold

47 m<sup>2</sup>, Prague 3, Vinohrady, Řipská





## Apartment One-bedroom (2+kk)

**Sold**47 m<sup>2</sup>, Prague 3, Vinohrady, Řipská

Total area	47 m <sup>2</sup>
Parking	-
Cellar	-
PENB	E
Reference number	103060

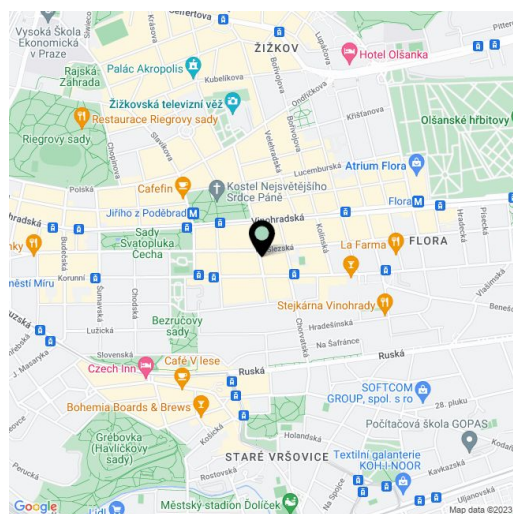
This south-facing apartment is located on the 2nd floor of a renovated historic apartment building with an elevator. The corner building stands in Vinohrady on the corner of side one-way streets near Jiřího z Poděbrad Square and several parks.

The functional layout consists of a living room with a kitchen, 1 bedroom, a bathroom with a shower, a separate toilet, and an entrance hall.

The interior is renovated and the kitchen is equipped (gas hob). Facilities include **wooden plank floors** and original **casement windows**. Heating is provided by a gas boiler. In the foyer is a built-in **storage space** under the ceiling.

The corner building with a **renovated ornamental facade** is located in the **wider center**, and the city center itself is only about 5 minutes away by metro or tram. There are cozy cafes, bistros, restaurants, and shops in the immediate vicinity, **farmer's markets** are held on Jiřího z Poděbrad Square, and the **Flora shopping and entertainment center** is within walking distance. The neighborhood is very pleasant thanks to landscaped parks. Nearby are the **Svatopluka Čecha** and **Bratři Čapků** parks. You can also walk to the **Grébovka** or **Riegrový Sady** parks.

Floor area 47.4 m<sup>2</sup>.



\* Size of the unit according to the Housing Act.  
The area consists of the sum total of the internal area of every room.