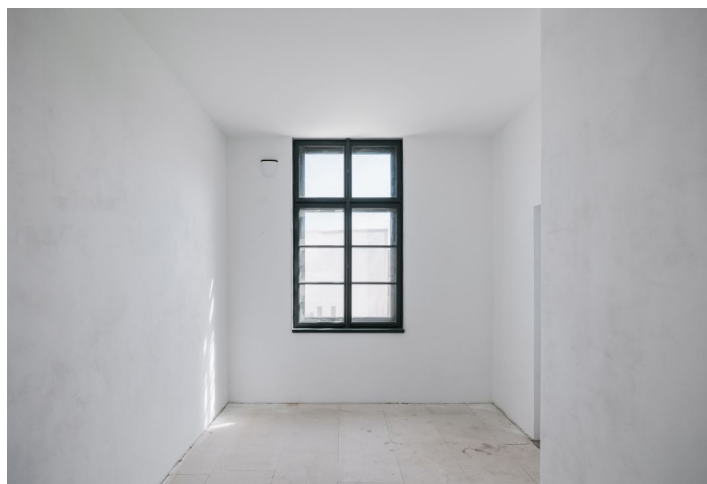
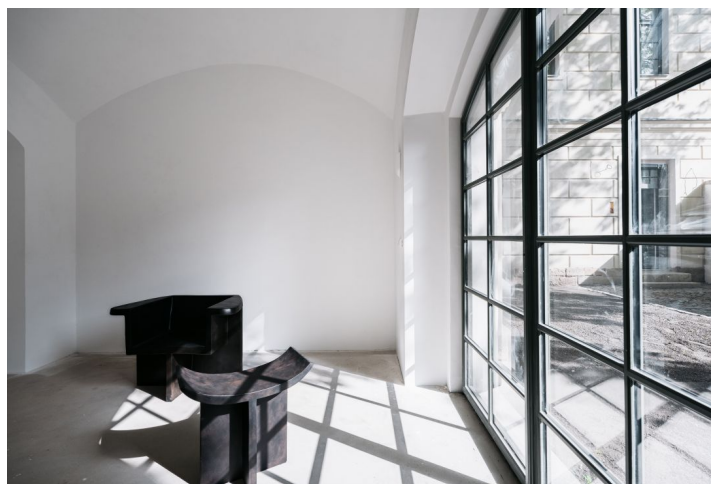




## Apartment One-bedroom (2+kk)

€ 358 964 | CZK 8 870 000

56.5 m², Prague 10, Vršovice, Bartoškova





# Apartment One-bedroom (2+kk)

€ 358 964 | CZK 8 870 000

56.5 m², Prague 10, Vršovice, Bartoškova

Total area	57 m²
Parking	-
Cellar	3 m²
Reference number	103086

This one-bedroom apartment is currently being built in the new Vodárna Residence in a unique heritage-protected former waterworks building from 1882. The Neo-Renaissance building is located next to a community garden on the border of Nusle and Vršovice, within easy reach of a full range of services and several parks. Completion is planned for spring 2024.

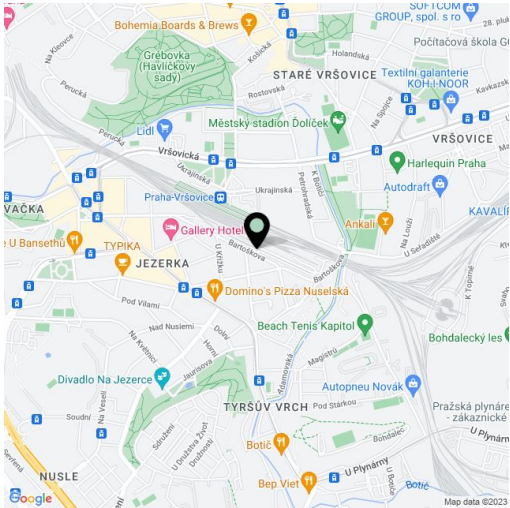
The area of the unit on the ground floor consists of a living room with a preparation for a kitchen and a storage floor, a bedroom, a bathroom (with a shower and toilet), and a foyer.

The high standard facilities include multi-layer wooden floors, underfloor heating with electric heating mats and the possibility to control via mobila application, Jablotron security system, heat recovery, white matt wooden interior doors with paneled frames, M&T Lusy handles, Ceratherm, Duravit, Geberit, and Laufen sanitary ware, ceramic tiles, and floor tiles. The wooden windows are replicas of the original ones, including fittings. The entrance door will be a new single-wing fire safety entrance door with a 3-point lock and casing profiles. A pram room will be available to the residents, and the unit includes a cellar storage unit. If interested, it is possible to equip the interior with custom-made furniture for an additional fee. The entrance area of the Vodárna Residence will be decorated with cleaned marlite, the lower part of the historic water reservoir will also be visible, and the floor will be made of original granite stones and polished concrete. There will be a new atypical steel staircase in the western tower and the original granite staircase in the eastern part.

The residence is located right next to the new underpass of the Vršovice Railway Station, from where you can reach the center of the Main Railway Station in 5 minutes. Tram stops are just a few steps away, and transport comfort will also be increased in the future by a D line subway station. There are shops in the immediate vicinity, including a supermarket, restaurants, cafes, schools, and medical services. It is close to a theater, cinema, and sports field, and you can connect in no time to the currently emerging unique bike path, the Vršovice Railway Promenade. There is a community garden in the neighborhood, and it is possible to walk to Havlíčkovy Sady, Jezerka or Folimanka park or Tyršův Hill in a short time.

Floor area including storage floor 56.5 m² (according to the owner's statement 47.80 m²), cellar 2.5 m².

Photos are of other units in the project. Visualizations are for illustrative purposes only.



\* Area of the unit according to the Civil Code. The area consists of the sum total area of the entire unit bounded by perimeter walls.

**€ 358 964 | CZK 8 870 000**

56.5 m<sup>2</sup>, Prague 10, Vršovice, Bartoškova

# V.09 2+kk

## 1.NP

09.01	Chodba	3,19 m <sup>2</sup>
09.02	Obytní pokoj + kč	18,29 m <sup>2</sup>
09.03	Koupelna	7,61 m <sup>2</sup>
09.04	Ložnice	16,26 m <sup>2</sup>
09.05	<b>Úložné patro</b>	<b>8,70 m<sup>2</sup></b>
	Úložná plocha bytu	46,55 m <sup>2</sup>
	Vnitřní konstrukce	2,25 m <sup>2</sup>
	<b>Podlahové plocha</b>	<b>47,80 m<sup>2</sup></b>
	Stěp	2,50 m <sup>2</sup>

**Plocha celkem**

**59,00 m<sup>2</sup>**

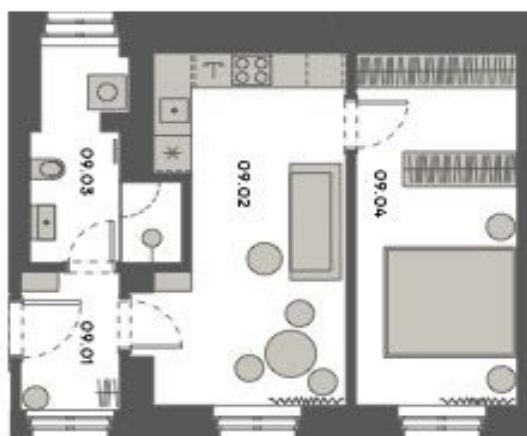
UPOZORNĚNÍ

[illegible]

### Poloha bytu v rámci domu



## Umístění bytu na počtu

PRIZEMI  
BYTUPATRO  
ÚLOŽNÉ