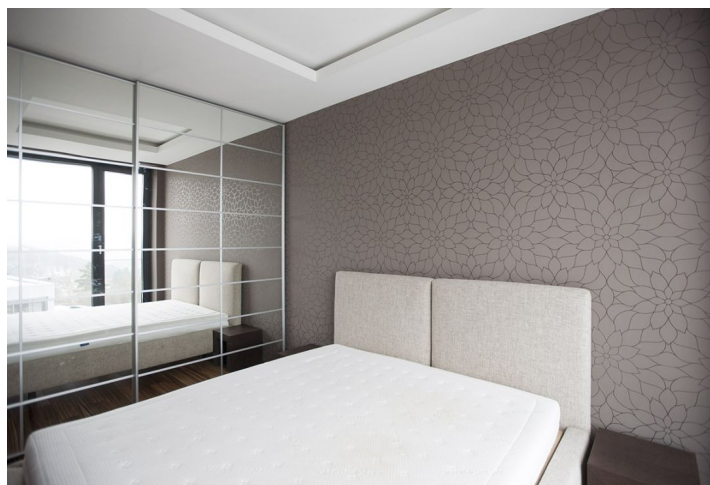




Apartment One-bedroom (2+kk)

€ 802 | CZK 20 000

60 m², Prague 4, Podolí, K sídlišti





Apartment One-bedroom (2+kk)

€ 802 | CZK 20 000

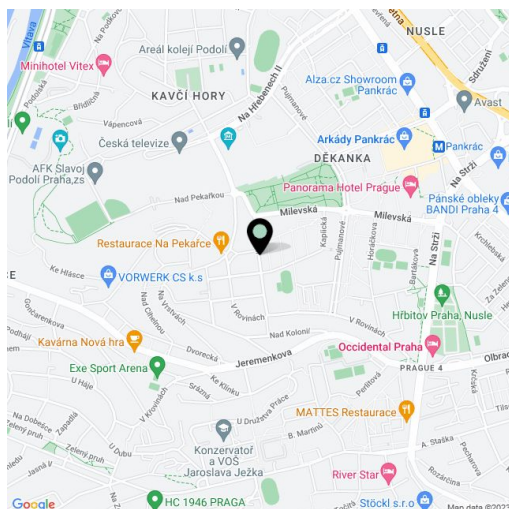
60 m², Prague 4, Podolí, K sídlišti

Total area	83 m²
Floor area*	60 m²
Terrace	23 m²
Parking	One garage space included.
Garage	Yes
Cellar	Yes
PENB	G
Reference number	10311
Available from	Immediately

High quality furnished 1-bedroom apartment with a 23 m² terrace providing far reaching green views situated on the third floor of a contemporary residential project with underground parking, 24-hour reception, security and camera system. Located moments from the Central Park and Czech TV grounds, a few minute walk to the Arkády Pankrác shopping mall and Pankrác metro station.

The interior features living room with a fully fitted open kitchen and terrace access, one bedroom with built-in wardrobes and a full glass wall, bathroom with bath tub and toilet, and an entry hall with built-in clothes closet.

Quality equipment, Zebrano wood floors, heated tiles in the bathroom, security door, French windows, outdoor electric blinds, dimming lights, SieMatic kitchen with Miele appliances, Wenge furniture, fold out sofa, Internet, WiFi router, video entry phone. 20 m² basement storage unit. Lift, spacious lobby and fitness in the building. Common building charges and utilities approx. CZK 6100 per month. Available from July 2014.



* Area of the unit according to the Civil Code. The area consists of the sum total area of the entire unit bounded by perimeter walls.