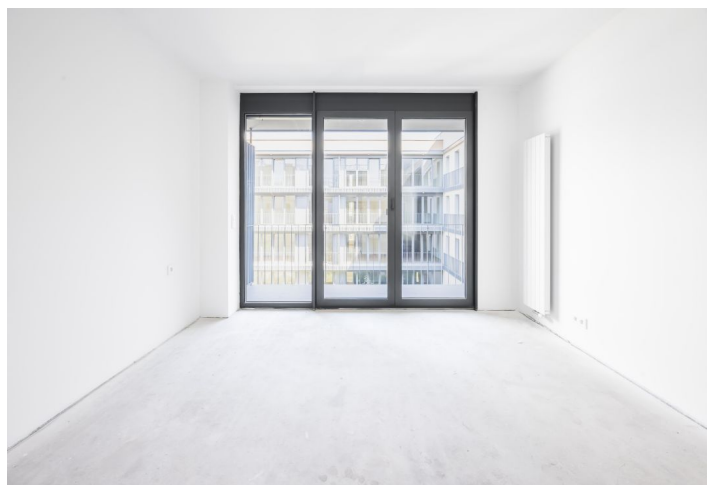
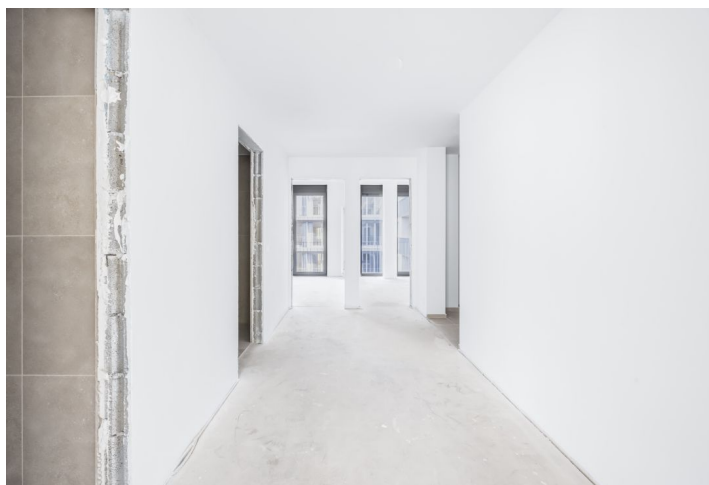
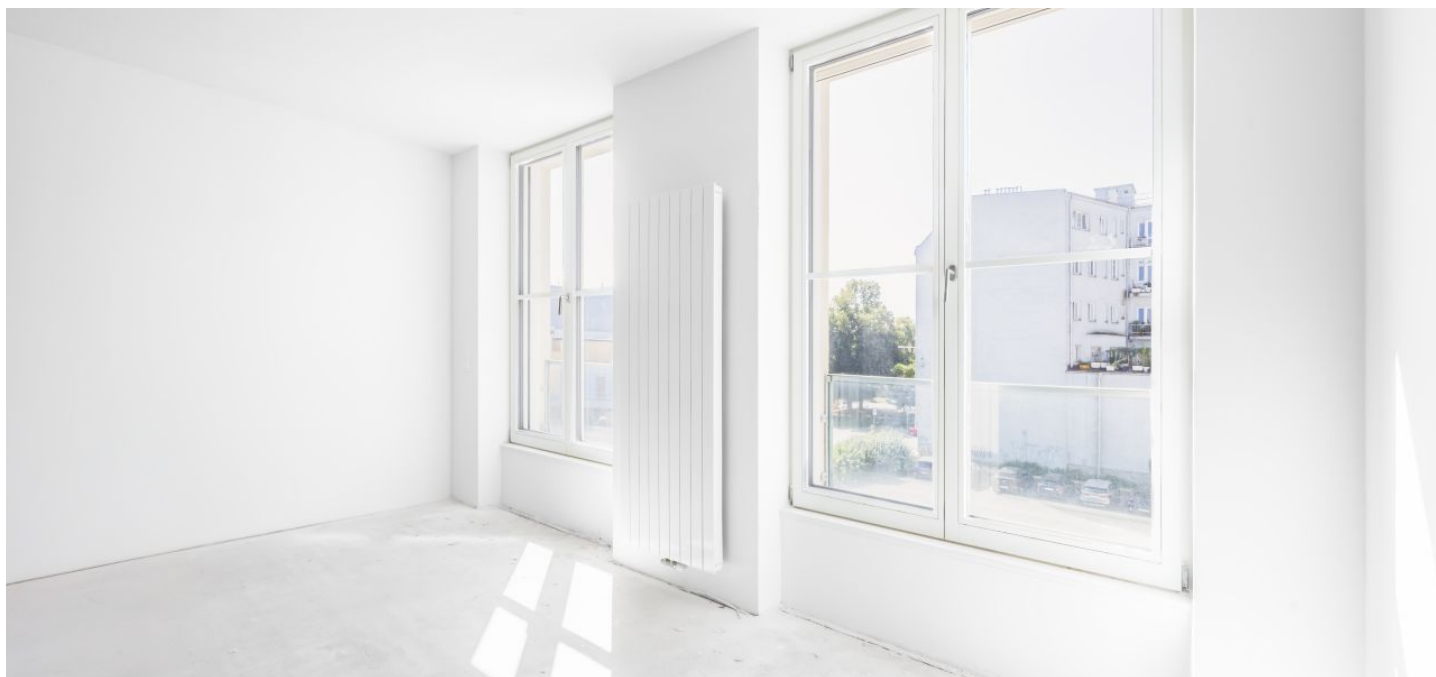




Apartment Two-bedroom (3+kk)

€ 335 479 | CZK 8 455 760

87.5 m², Ostrava-město, Moravská Ostrava, Masarykovo náměstí





Apartment Two-bedroom (3+kk)

€ 335 479 | CZK 8 455 760

87.5 m², Ostrava-město, Moravská Ostrava, Masarykovo náměstí

| | |
|------------------|--------------------------------|
| Total area | 100 m ² |
| Floor area* | 88 m ² |
| Loggia | 12 m ² |
| Parking | Parking space at an extra cost |
| Garage | Yes |
| Cellar | 2 m ² |
| PENB | B |
| Reference number | 103158 |

This bright apartment with a loggia and the possibility of purchasing a garage parking space is part of the unique Nové Lauby residential complex. This new project is being created right in the center of Ostrava near Masaryk Square with a fountain, within walking distance of a full range of services and a park.

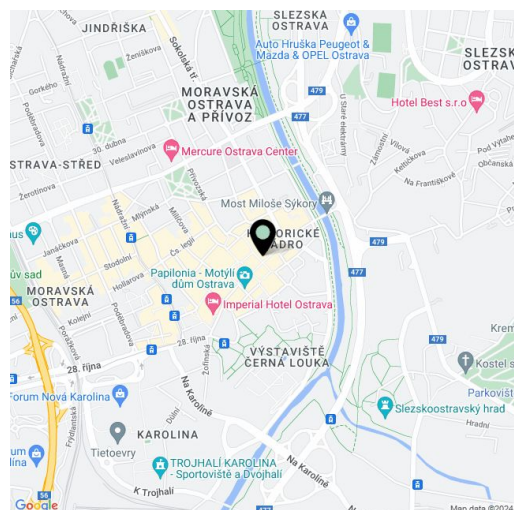
The layout consists of a living room with a preparation for a kitchen, two bedrooms, a bathroom with a toilet, a separate guest toilet, and an entrance hall. **The apartment has a loggia.**

The project was designed by the renowned **znamení čtyř - architekti studio**. The new five-story building will be covered with **greenery**, and a **landscaped atrium** will be created in the complex's center. The interior is illuminated by **large-format windows** with aluminum or wooden frames and the standard of equipment is offered in two options. **There is a possibility to buy a parking space.**

The apartment complex will become a natural part of the historic center of Ostrava. In the area around Masaryk Square, you can enjoy cafes, restaurants, a shopping center, a museum, a cinema, or a library. Schools and the Antonín Dvořák Theater are a few minutes' walk away. Part of the city monument zone is the large park on Černá Louka and the Ostravice River is lined with bike paths.

Floor area 87.5 m², loggia 12 m², cellar 2.44 m².

For more information about the project, visit the website www.novelauby.cz



* Area of the unit according to the Civil Code. The area consists of the sum total area of the entire unit bounded by perimeter walls.



Apartment Two-bedroom (3+kk)

€ 335 479 | CZK 8 455 760

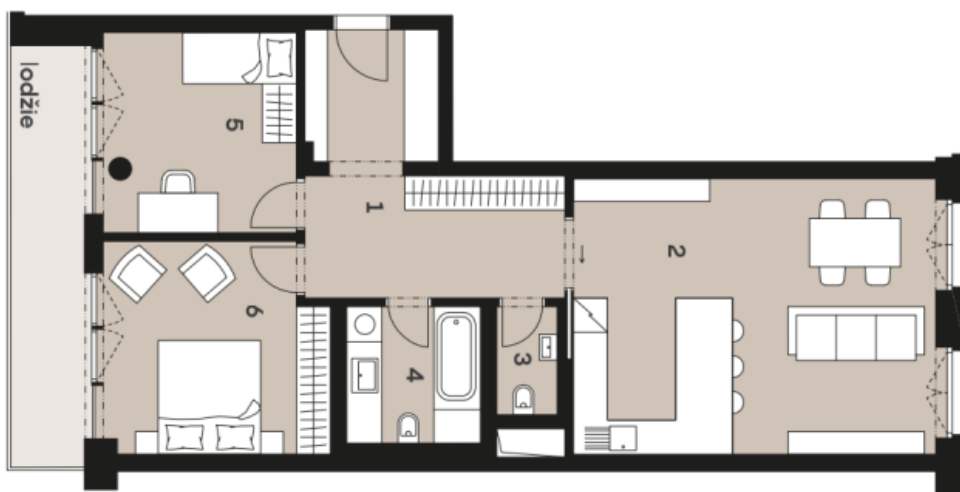
87.5 m², Ostrava-město, Moravská Ostrava, Masarykovo náměstí

Nové Lauby

Byt 3.D.05

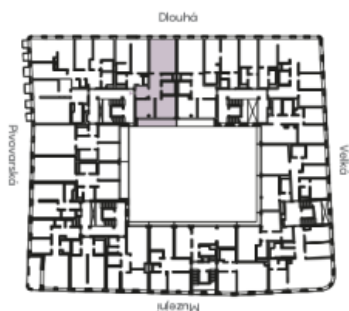
| | | |
|------------------|-----------------------------|----------------------|
| Dispozice | 3+kk | |
| Podlaží | 2.NP | |
| Vstup z ulice | Dlouhá | |
| 1 | Hala | 16,58 m ² |
| 2 | Obýtv pokoj s kuch. koutkem | 31,53 m ² |
| 3 | WC | 1,94 m ² |
| 4 | Koupelna s WC | 5,64 m ² |
| 5 | Pokoj | 11,92 m ² |
| 6 | Pokoj | 14,30 m ² |
| Užitná plocha | 80,91 m ² | |
| Podlahová plocha | 87,14 m ² | |
| Lodžie | 10,46 m ² | |

Exkluzivní zastoupení
svoboda&williams | CHRISTIE'S
INTERNATIONAL REAL ESTATE



*Projekt Nové Lauby je výrazně předtím než vznikne. Všechny rozměry a informace jsou pouze orientační. Soudržná kúpna cena bytu není
nabýval. Celková plocha bytu je včetně prázdné a veněních rozměry sáh die videného rozřzen 08/02/2023 Sb.

0 1m 2m 5m



www.novelalaby.cz

info@novelalaby.cz
+420 724 551 238