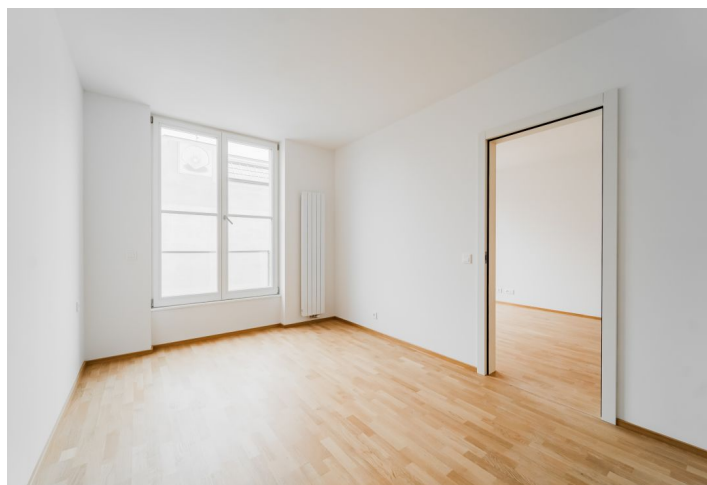




Apartment Three-bedroom (4+kk)

€ 454 581 | CZK 11 480 450

128 m², Ostrava, Moravská Ostrava, Masarykovo náměstí





Apartment Three-bedroom (4+kk)

€ 454 581 | CZK 11 480 450

128 m², Ostrava, Moravská Ostrava, Masarykovo náměstí

Total area	137 m ²
Floor area*	128 m ²
Balcony	9 m ²
Parking	Parking space at an extra cost
Garage	Yes
Cellar	3 m ²
PENB	B
Reference number	103160

This bright apartment with two balconies and the possibility of purchasing a garage parking space is part of the unique Nové Lauby residential complex. This new project is being created right in the center of Ostrava near Masaryk Square with a fountain, within walking distance of a full range of services and a park.

The layout consists of a living room with a preparation for a kitchen, 3 bedrooms, a walk-in closet, two bathrooms with a toilet, a guest toilet, and an entrance hall. One balcony is accessible from the living room and one from the bedroom.

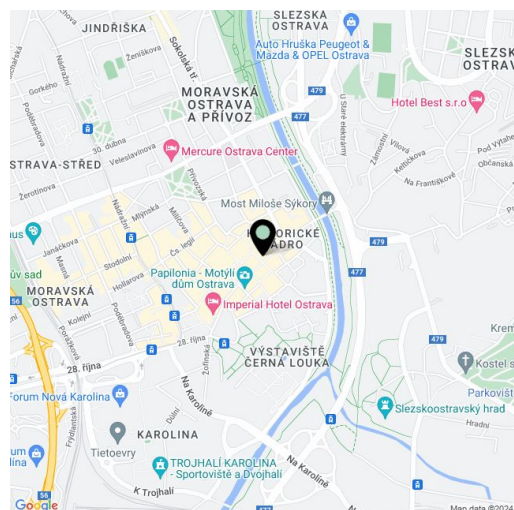
The project was designed by the renowned **znamení čtyř - architekti studio**. The new five-story building will be covered with **greenery**, and a **landscaped atrium** will be created in the complex's center. The interior is illuminated by **large-format windows** with aluminum or wooden frames and the standard of equipment is offered in two options. **There is a possibility to buy a parking space.**

The apartment complex will become a natural part of the historic center of Ostrava. In the area around Masaryk Square, you can enjoy cafes, restaurants, a shopping center, a museum, a cinema, or a library. Schools and the Antonín Dvořák Theater are a few minutes' walk away. Part of the city monument zone is the large park on Černá Louka and the Ostravice River is lined with bike paths.

Floor area 128 m², balconies 3.5 m² and 5.5 m², a cellar 2.69 m².

Used photos are of already completed units in the project.

For more information about the project, visit the website www.novelauby.cz



* Area of the unit according to the Civil Code. The area consists of the sum total area of the entire unit bounded by perimeter walls.