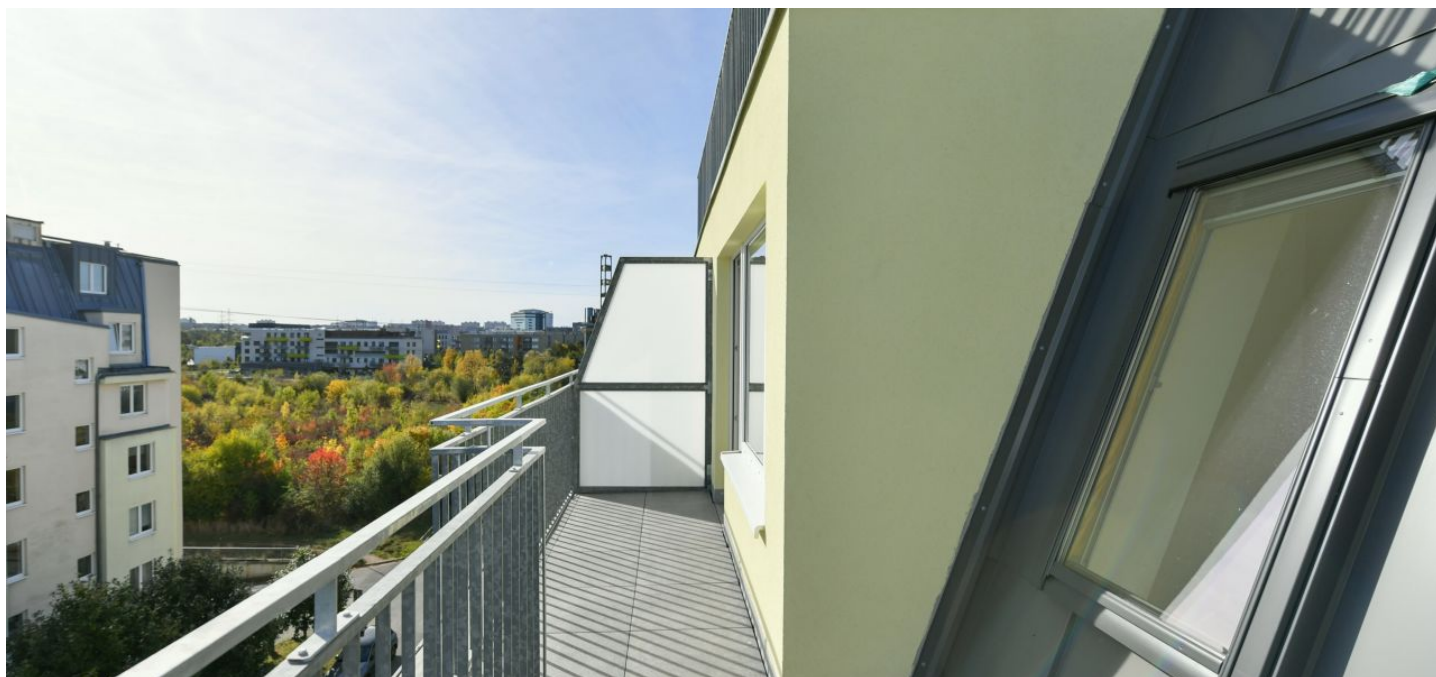




Apartment One-bedroom (2+kk)

€ 281 263 | CZK 6 950 000

47 m², Prague 4, Chodov, Divišovská





Apartment One-bedroom (2+kk)

€ 281 263 | CZK 6 950 000

47 m², Prague 4, Chodov, Divišovská

Total area	57 m²
Floor area*	47 m²
Terrace	10 m²
Parking	Garage parking space
Cellar	-
PENB	C
Reference number	103199

This newly renovated bright apartment with a terrace and a garage parking space is part of a well-maintained apartment building from 2003. In a pleasantly green and quiet place located on the border of Chodov and Záběhllice.

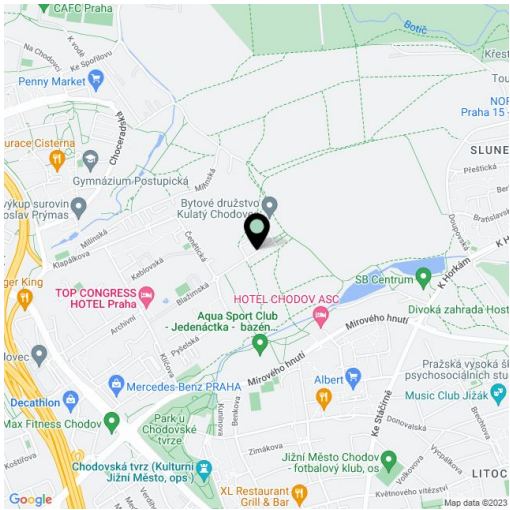
The area of the apartment on the 5th penultimate floor consists of a living room with a kitchen and a **southeast-facing terrace**, a bedroom, a bathroom (bathtub, sink, connection for a washing machine), a separate toilet, a storage room, and a foyer.

The interior has recently been renovated—windows are new Velux triple-glazed (in the bedroom) and plastic double-glazed (in the living room) with **blinds**, vinyl floors, large-format tiles, and a **Next** security entrance door. The custom-made Nobilia kitchen is equipped with a granite sink and **Siemens** and **Electrolux** appliances (refrigerator, induction hob, electric and microwave oven, hood, dishwasher). **Grohe** bathroom faucets. Heating and DHW heating is handled by the LOGotherm residential heat exchanger station system. The apartment includes a **garage parking space** located right next to the elevator.

There are several restaurants and a cafe or a sports center with a swimming pool not far from the building. You can take a bus from the nearby bus stop to the Chodov metro station in 4 minutes. A **bike path** passes through the area. The **Hostivař-Záběhllice nature park** with the **Meandry Botič** natural monument makes the location even more pleasant, and the **park at Chodovská tvrz**, which serves as a cultural center, is also close-by.

The annuity will be paid before the share is transferred. Negotiations on the transfer to personal property have begun.

Floor area 46.67 m², terrace 10.6 m².



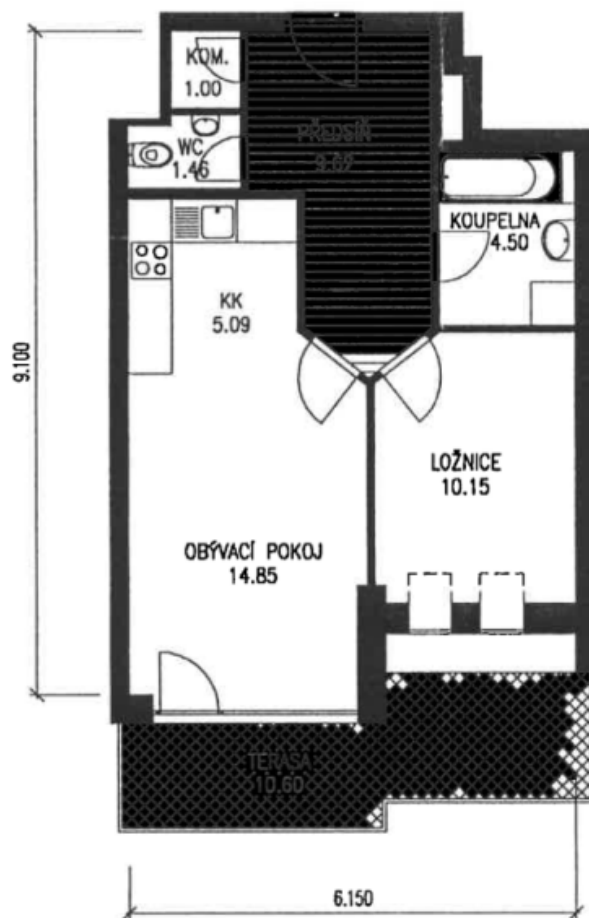
* Size of the unit according to the Housing Act.
The area consists of the sum total of the internal area of every room.



Apartment One-bedroom (2+kk)

€ 281 263 | CZK 6 950 000

47 m², Prague 4, Chodov, Divišovská



M 1:100