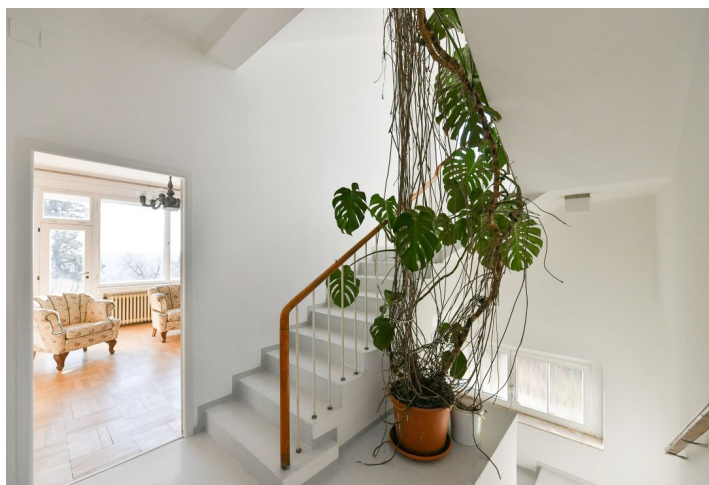




House Six-bedroom (7+1)

330 m², Prague 5, Smíchov, Na Šumavě

Rented





House Six-bedroom (7+1)

Rented

330 m², Prague 5, Smíchov, Na Šumavě

Plot	735 m ²
Foot print	151 m ²
Garden	584 m ²
Parking	Garage.
Garage	Yes
Cellar	-
Service price	Utilities are billed separately.
PENB	G
Reference number	103210
Available from	Immediately

This unfurnished Functionalist villa with 3 bathrooms and pretty views of Prague is set on a slope in the prestigious residential area of Hřebenka, Prague 5, with plenty of greenery. Conveniently located for downtown Prague including the business and entertainment zone of Anděl/Nový Smíchov with complete amenities and services in the area. The nearest bus stop is located just a few min. walk from the building.

The lower ground floor includes a **separate apartment unit** with a private entrance (living room with a kitchen, bedroom, shower bathroom, toilet), two large storage rooms, a smaller closet, a laundry room with a utility area, and an entrance hall. The 1st floor offers a living room with a dining area and a **terrace**, a fully fitted kitchen with a pantry, and a toilet. The 2nd floor features a master bedroom with built-in wardrobes, a bedroom with a **balcony**, another bedroom, a walk-through fitted clothes closet, and a bathroom with a bathtub and toilet. There is a 3rd floor with a bedroom, an adjacent **walk-in closet/home office/nursery**, a shower bathroom with a toilet, and an attic storage space.

Preserved original details, **hardwood parquet floors**, new carpets, tiles, gas boiler, washing machine, dishwasher. A **garage** is available.

