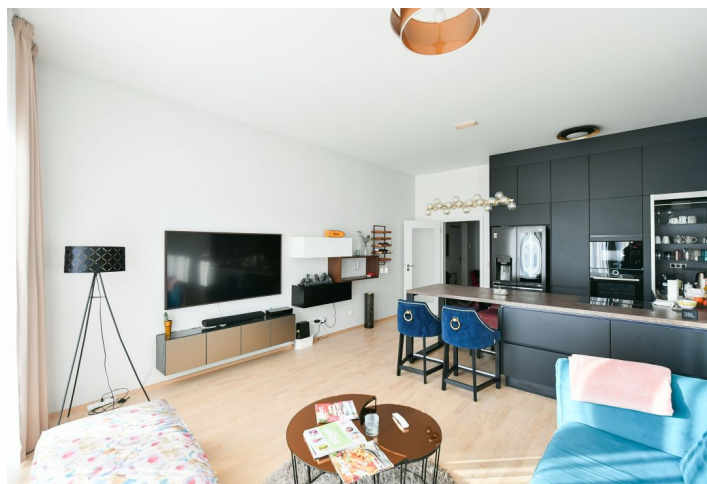




Apartment Three-bedroom (4+kk)

Rented

120 m², Prague 8, Karlín, Breitfeldova





Apartment Three-bedroom (4+kk)

Rented

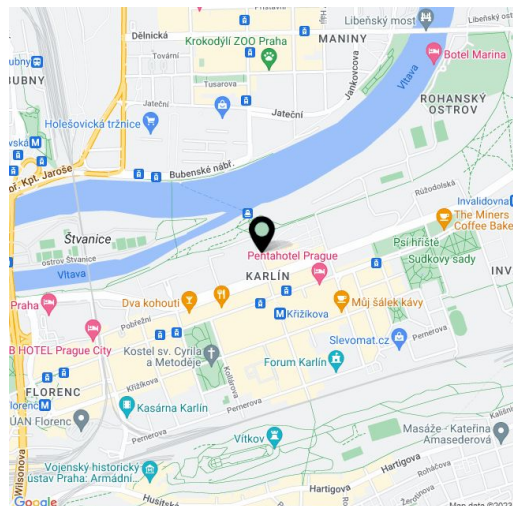
120 m², Prague 8, Karlín, Breitfeldova

Total area	177 m ²
Floor area*	120 m ²
Terrace	57 m ²
Parking	2 parking spaces
Garage	Yes
Cellar	Yes
Service price	Common services, water, electricity, and Internet CZK 12,000/month.
PENB	B
Reference number	103259
Available from	Immediately

Boasting 2 terraces, a Jacuzzi, and far-reaching views including of Vítkov Hill, this furnished split-level apartment is on the 7th topmost floor of the recently built Port Karolina residential project with underground parking and a reception. Located right on the Vltava riverbank on Rohanský Island, on the border of Prague 1 and Prague 8, in one of the most dynamic neighborhoods, with full amenities within easy reach and quick access to the city center by tram and from the Křižíkova metro station, which is just a few blocks away. A bike and jogging path is mere steps from the building, and a fitness/relaxation center and golf course are nearby.

On the lower floor, there is a living room with a fully equipped kitchenette, 2 bedrooms, a bathroom with a bathtub and toilet, a separate toilet, a storage room, and an entrance hall. On the upper floor, the apartment offers a bedroom with an en-suite bathroom (shower, toilet) and access to the terrace, another separate toilet, and a hall with access to a second spacious terrace with a Jacuzzi and sitting area.

Floating floors and tiles, central heating, plenty of built-in wardrobes, washer-dryer, American fridge freezer and ice-maker, dishwasher, induction hob, built-in kitchen appliances, three TVs. Possibility to rent **2 parking spaces in the garage** (one for CZK 2,500/month). **Cellar.**



* Area of the unit according to the Civil Code. The area consists of the sum total area of the entire unit bounded by perimeter walls.