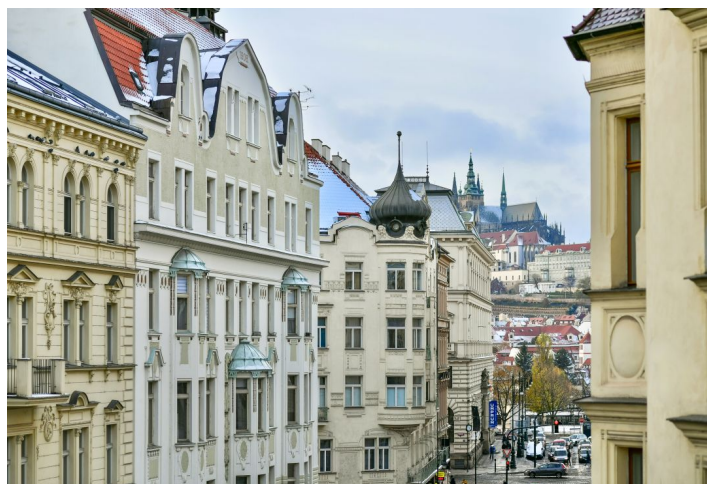




Apartment One-bedroom (2+1)

Sold

91 m², Prague 1, Josefov, Žatecká





Apartment One-bedroom (2+1)

Sold91 m², Prague 1, Josefov, Žatecká

Total area	91 m ²
Parking	-
Cellar	5 m ²
Service price	5 332 CZK monthly
PENB	G
Reference number	103323

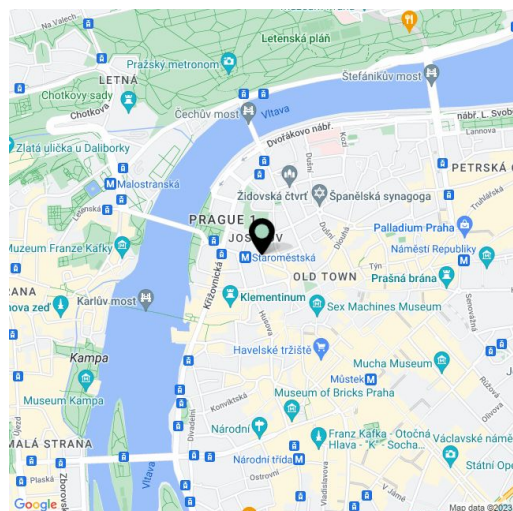
This elegant southwest-facing apartment with high ceilings and views of Prague Castle is located on the 3rd floor of an Art Nouveau building in the prestigious Josefov Quarter, close to Old Town Square, Pařížská Street, the Vltava embankment, and the Charles Bridge.

The layout offers a forty-meter living room with a dining area and an open plan kitchen, a corner bedroom with a **bay window** and a **walk-in wardrobe** with access to the bathroom, as well as 2 closet, a separate toilet, and a spacious entrance hall from which the bathroom is accessible.

The tastefully renovated interior is decorated with original **architectural and craftsmanship elements**. Floors are wooden, windows are wooden casement, the heating is central. The apartment comes with a **cellar**. The richly decorated **Art Nouveau building** has been completely renovated, and has a **new elevator**, roof, and common areas.

The building stands on the site of the former Jewish Quarter, in Josefov with an impressive **atmosphere** and many **historical monuments**. This central location allows you to have everything you need within easy reach, and metro and tram stations are about a minute's walk away.

Floor area 92 m², cellar 5 m².



* Size of the unit according to the Housing Act.
The area consists of the sum total of the internal area of every room.

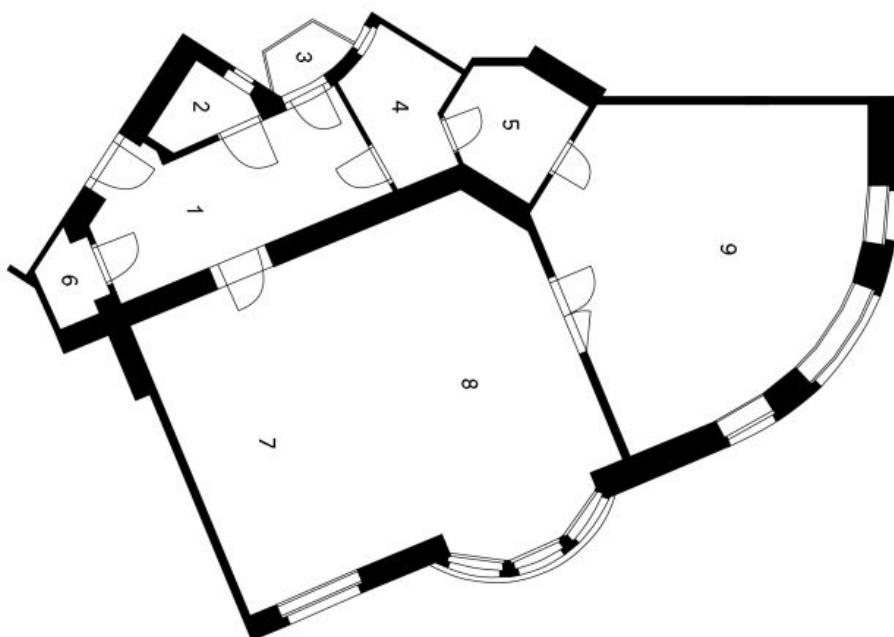


Apartment One-bedroom (2+1)

91 m², Prague 1, Josefov, Žatecká

Sold

- 1 Píedsíň
- 2 WC
- 3 Balkon
- 4 Koupelna
- 5 Šatna
- 6 Spíží
- 7 Kuchyň
- 8 Jídelna + Obývací pokoj
- 9 Ložnice



Žatecká

Byt 2+1

4. NP