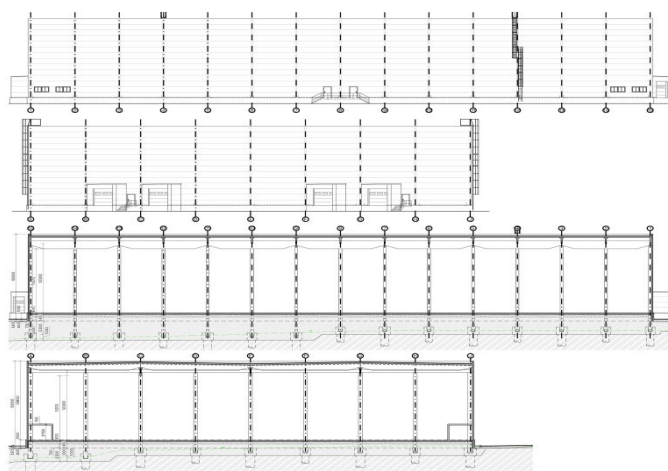




## Industrial park

5 000 m<sup>2</sup>, Třebíč, Kozichovice, Žďárského

Ask for price





## Industrial park

5 000 m<sup>2</sup>, Třebíč, Kožichovice, Žďárského

**Ask for price**

<b>Total area</b>	5 000 m <sup>2</sup>
<b>Available area for rent</b>	5 000 m <sup>2</sup>
<b>Ceiling height</b>	12 m
<b>Floor loading capacity</b>	5 t/m <sup>2</sup>
<b>Column grid structure</b>	—
<b>Structure</b>	Reinforced concrete structure
<b>PENB</b>	G
<b>Reference number</b>	103434

Industrial park offers for rent warehouse, production areas and office space and social facilities in the area located in the industrial zone in the southern part of the city of Třebíč in the locality of Kožichovice.

### Location:

The park is located approximately 20 km from D1 Exit 141 and Exit 146 near the town of Náchod and 20 km from the planned D11 motorway. The area is part of an industrial zone located outside the city. Excellent accessibility for employees by train and bus.

### Facilities and services:

- the area is fully fenced and guarded
- the premises are accessible 24/7
- utilities - sewerage, water supply, electric network 230 V/ 400 V, heating system
- sufficient capacity of the electricity network
- outdoor handling areas for unloading and loading

### Industrial/warehouse space:

- 4 separate units - each 1,200 sq.m. industrial, warehouse space + 50 sq.m. background
- ceiling clearance of 12 m
- floor load capacity 5 t/sq.m.
- sanitary and office facilities

The tenant does not pay commission.

