



Apartment Two-bedroom (3+1)

Sold

91 m², Prague 2, Vinohrady, Rumunská





Apartment Two-bedroom (3+1)

Sold91 m², Prague 2, Vinohrady, Rumunská

Total area	91 m ²
Parking	-
Cellar	Yes
PENB	G
Reference number	103502

This sunny and airy corner apartment with high ceilings is located on the 4th floor of a renovated apartment building with an elevator. The building is situated in a popular residential part of Vinohrady between Tylovo and Míru squares, at a convenient distance from a tram stop and metro stations.

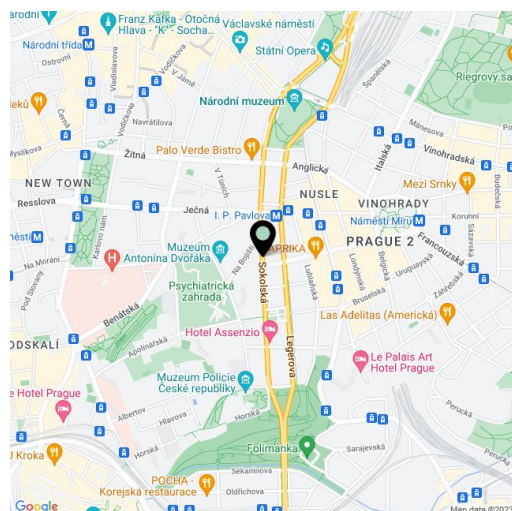
The layout offers a corner living room connected by sliding doors to the kitchen and dining room, as well as 2 bedrooms, a bathroom (with a bathtub), a separate toilet, a closet, and an entrance hall. The bathroom is accessible from both the hall and the master bedroom.

The elegant apartment has been **sensitively renovated**. Floors are **hardwood wooden parquet** and tiled; windows are original **wooden casement**. Facilities include built-in wardrobes, a complete kitchen with **Bosch** appliances, and a security system with an alarm. Heating is provided by a gas boiler. The apartment comes with a **cellar storage unit**, and the building is equipped with a **camera system** and a **chip-accessed entrance**.

This prestigious area in **the wider city center** is within easy reach of everything you need. The neighborhood is full of shops, restaurants, cafes, clubs, and theaters, and excellent transport accessibility is ensured by trams and metro stations (lines A and C, and in the future also the new D line). The **Kateřinská Garden** and **Folimanka** or **Grébovka** parks are also nearby.

Floor area 91 m².

Rented at market price until July 31st, 2024.



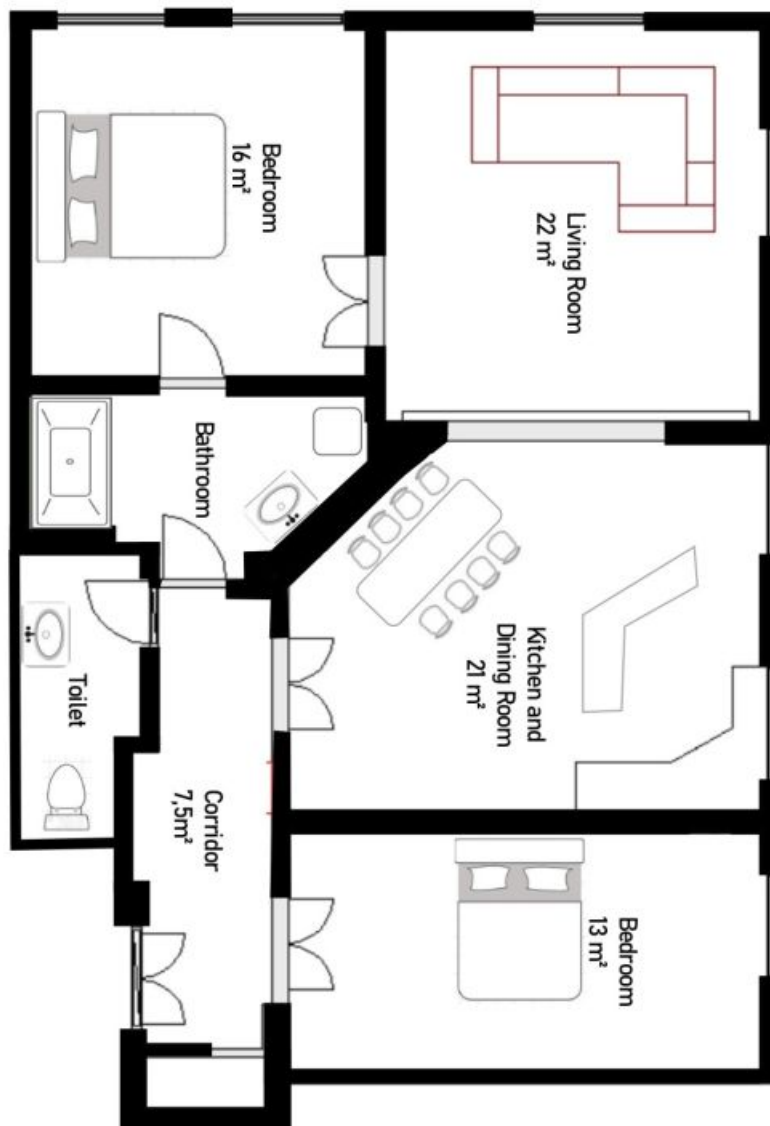
* Area of the unit according to the Civil Code. The area consists of the sum total area of the entire unit bounded by perimeter walls.



Apartment Two-bedroom (3+1)

Sold

91 m², Prague 2, Vinohrady, Rumunská



Flat Plan