



Apartment Two-bedroom (3+kk)

Rented

82.49 m², Praha 5, Smíchov, Na Valentince





Apartment Two-bedroom (3+kk)

Rented

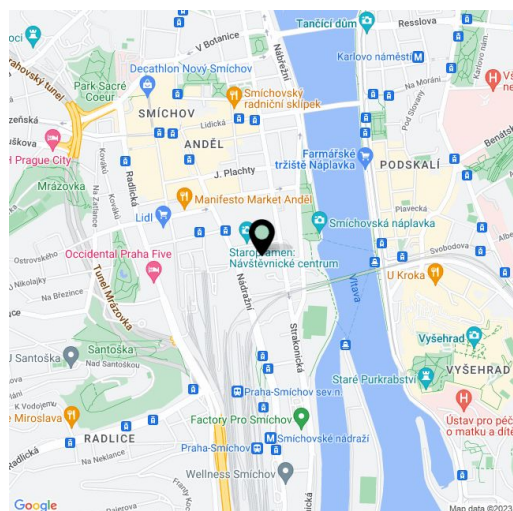
82.49 m², Praha 5, Smíchov, Na Valentince

Total area	94 m ²
Floor area*	82 m ²
Terrace	11 m ²
Parking	Garage parking.
Garage	Yes
Cellar	-
Service price	Monthly deposit for services, water, heating, electricity, and Internet CZK 8,500.
PENB	Not required
Reference number	103513
Available from	Immediately

Offering a terrace and nice views of Prague, this brand new completely furnished air-conditioned apartment with 2 bathrooms is situated on the newly built 6th topmost floor of a completely refurbished historic apartment building with an elevator. Located close to the Anděl commercial center in Smíchov and a newly arising district with a pedestrian zone, with great accessibility by metro and tram, within easy reach of the French School, the Smíchov and Výtoň embankments, and several sports grounds.

The interior features a living room with a fully fitted open plan kitchen and access to the **terrace**, a master bedroom with a small storage room, a study/second bedroom, 2 bathrooms (bathtub, toilet/walk-in shower, toilet), and an entrance hall. The apartment is accessible from the **courtyard terrace** in the building.

Air-conditioning, hardwood floors, tiles, automatic exterior blinds, central underfloor heating, washer/dryer, Siemens and Bosch kitchen appliances, dishwasher, induction cooktop, American type fridge, sound system, video entry phone. A **garage parking** space is included.



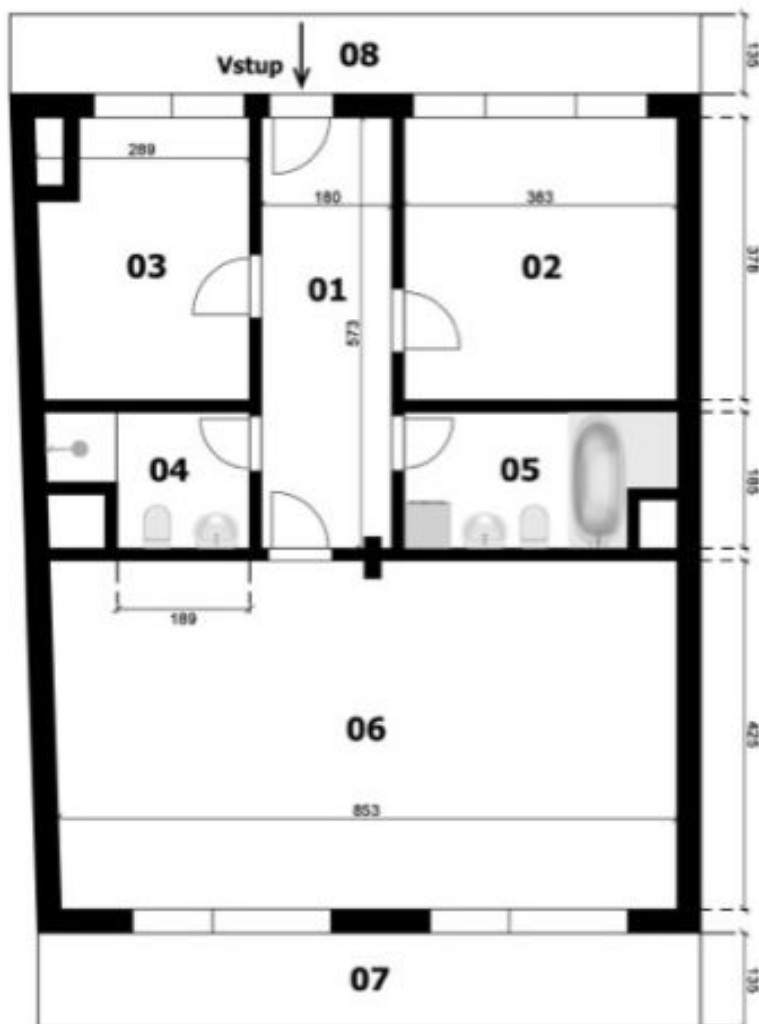
* Area of the unit according to the Civil Code. The area consists of the sum total area of the entire unit bounded by perimeter walls.



Apartment Two-bedroom (3+kk)

Rented

82.49 m², Praha 5, Smíchov, Na Valentince



Řez



Legenda místností

01. Předsíň	10,37 m ²
02. Pokoj	15,01 m ²
03. Pokoj	10,58 m ²
04. WC / koupelna	4,15 m ²
05. WC / koupelna	6,04 m ²
06. Obývací pokoj + kk	36,34 m ²
07. Terasa	11,23 m ²
08. Pavlač	
Celková plocha	84,84 m²