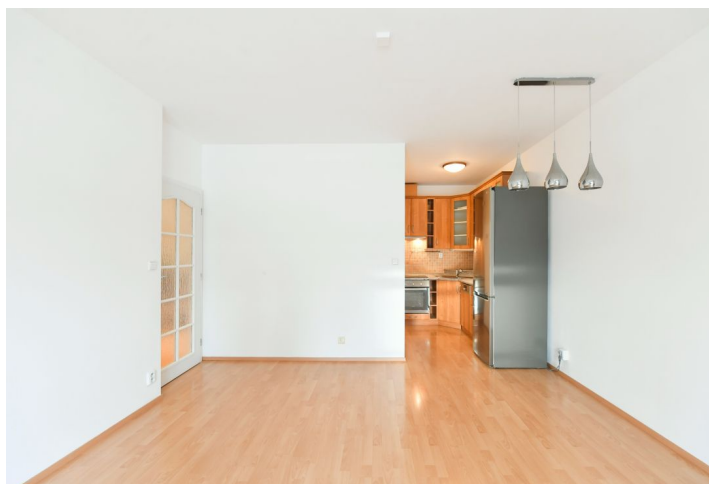




## Apartment One-bedroom (2+kk)

Rented

53 m<sup>2</sup>, Praha 10, Vršovice, Přípotoční





## Apartment One-bedroom (2+kk)

Rented

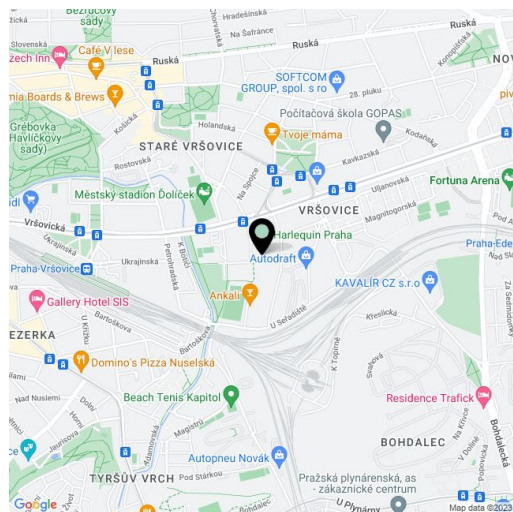
53 m<sup>2</sup>, Praha 10, Vršovice, Přípotoční

Total area	53 m <sup>2</sup>
Parking	Allocated outdoor parking.
Cellar	-
Service price	Monthly deposit for services, water, and heating: CZK 4,000. Electricity is billed separately.
PENB	Not required
Reference number	103517
Available from	Immediately

This unfurnished apartment is on the ground floor of a residential building on a quiet street just moments from the **Ďolíček** football stadium (Bohemians Praha) and the bike path along the **Botič Stream**. Located within easy reach of complete amenities including the **Eden** shopping center, near popular **Havlíčkovy Sady Park**. There is a tram stop only steps from the building, and you can also use the train connections from the nearby **Vršovice Railway Station** to get to the city center.

The interior features a living room with a fully fitted open plan kitchen and a dining area, a bedroom with a built-in wardrobe, a bathroom (bathtub, toilet), a large storage room, and an entrance hall. The apartment faces the quiet green areas around the building.

Green views, laminate floors, tiles, exterior safety roller blinds, central heating, underfloor heating in the bathroom, washer/dryer, dishwasher. An allocated outdoor parking space is included.



\* Size of the unit according to the Housing Act.

The area consists of the sum total of the internal area of every room.