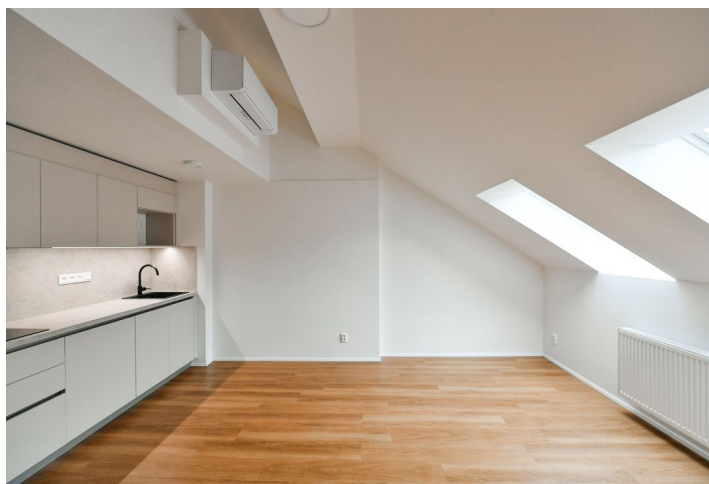




## Apartment Two-bedroom (3+kk)

Rented

74 m<sup>2</sup>, Prague 5, Smíchov, Staropramenná





## Apartment Two-bedroom (3+kk)

Rented

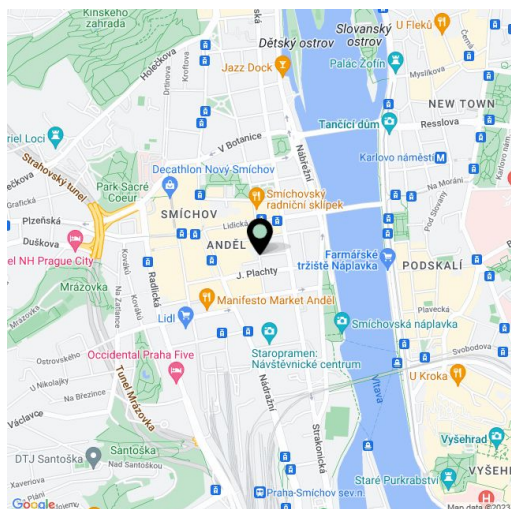
74 m<sup>2</sup>, Prague 5, Smíchov, Staropramenná

Total area	84 m <sup>2</sup>
Floor area*	74 m <sup>2</sup>
Terrace	10 m <sup>2</sup>
Parking	-
Cellar	Yes
Service price	Monthly deposit for services, water, and heating: CZK 3,500. Electricity is billed separately.
PENB	Not required
Reference number	103589
Available from	Immediately

This air-conditioned unfurnished split-level apartment with 2 bathrooms, a terrace, and a balcony is on the 5th topmost floor of a completely refurbished residential building with a new elevator. Conveniently located just a three-minute walk from the Anděl metro station and Nový Smíchov shopping and entertainment center, within walking distance of the Na Knížecí bus terminal. Complete amenities and services are available nearby, plus excellent transportation links to the city center.

The lower level includes a living room with a fully fitted open plan kitchen and dining area, a bedroom with a balcony facing the courtyard, a bathroom (walk-in shower, toilet), and an entrance hall. The upper floor features a second bedroom with a bathroom (walk-in shower, toilet) and a terrace.

Vinyl floors, tiles, central heating, automatic ventilation system throughout the apartment, dishwasher, cellar. A bike storage is available for the tenants.



\* Size of the unit according to the Housing Act.

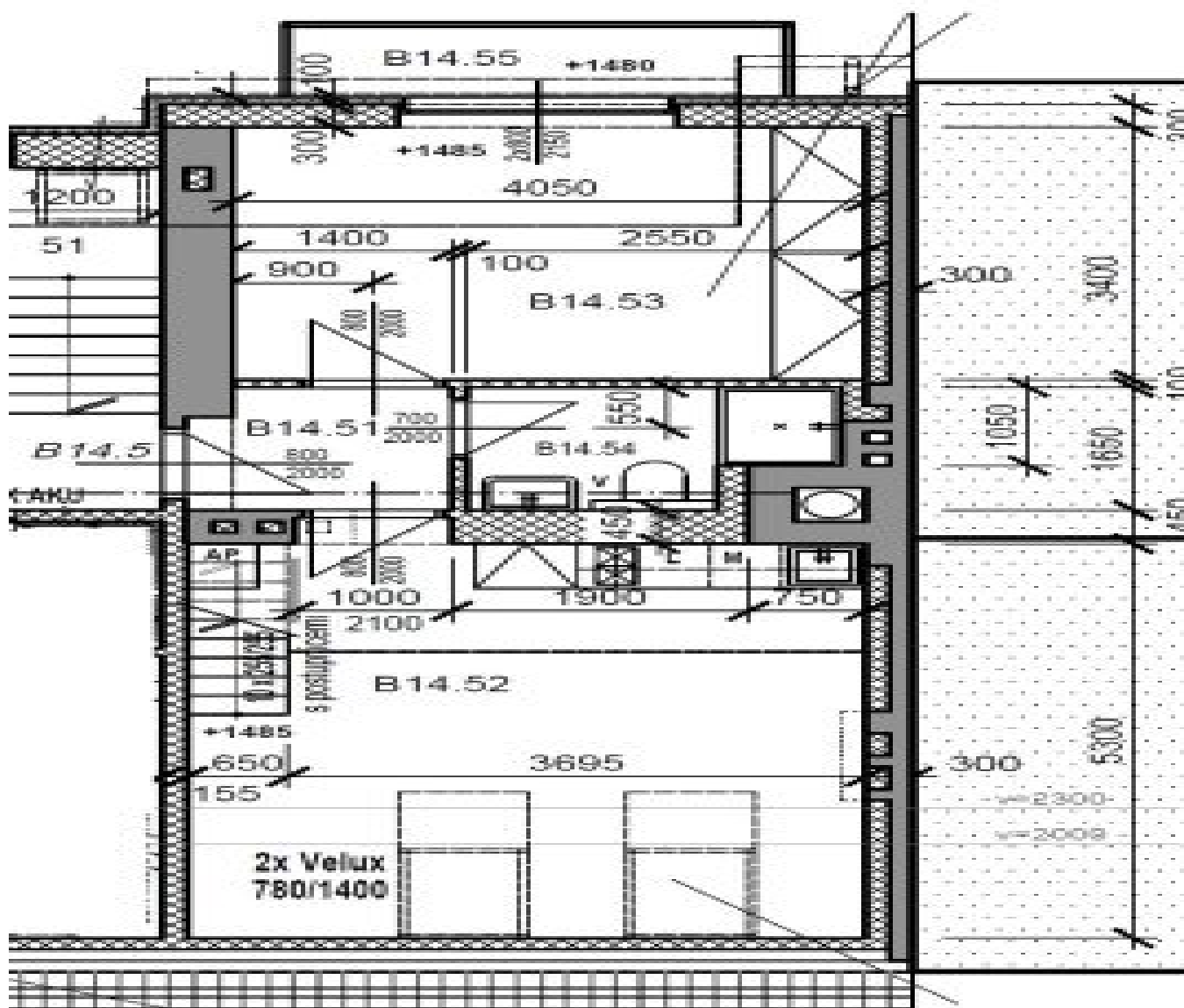
The area consists of the sum total of the internal area of every room.



## Apartment Two-bedroom (3+kk)

Rented

74 m<sup>2</sup>, Prague 5, Smíchov, Staropramenná



B14 / byt		
B14.51 ZÁDVEŘÍ	/ keramická dlažba	2,7 m <sup>2</sup>
B14.52 OBYTNÁ ČÁST	/ dřevěné vlysy	23,4 m <sup>2</sup>
B14.53 LOŽNICE	/ dřevěné vlysy	14,1 m <sup>2</sup>
B14.54 KOUPELNA	/ keramická dlažba	3,5 m <sup>2</sup>
B14.55 BALKÓN	/ keramická dlažba	3,6 m <sup>2</sup>
B14.66 GALERIE	/ vlny	20,0 m <sup>2</sup>
B14.67 STŘEŠNÍ TERASA	/ dlaždice na terčích	6,5 m <sup>2</sup>
<b>celkem 5. N.P. / byt B14</b>		<b>47,3 m<sup>2</sup></b>
<b>celkem / byt B14</b>		<b>73,6 m<sup>2</sup></b>



# Apartment Two-bedroom (3+kk)

74 m<sup>2</sup>, Prague 5, Smíchov, Staropramenná

Rented

