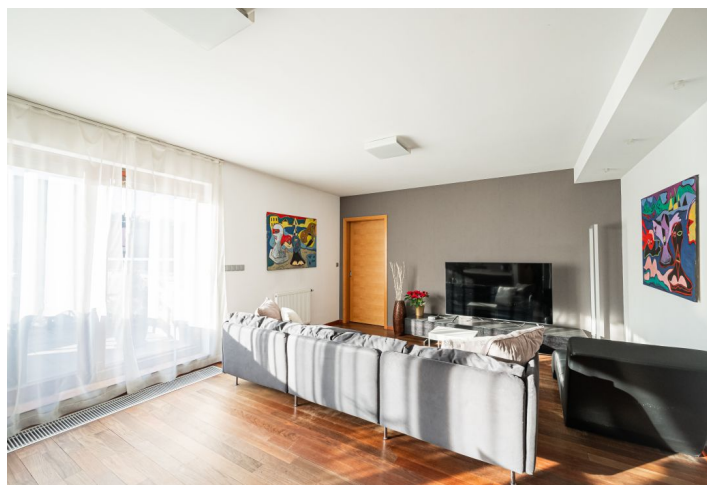
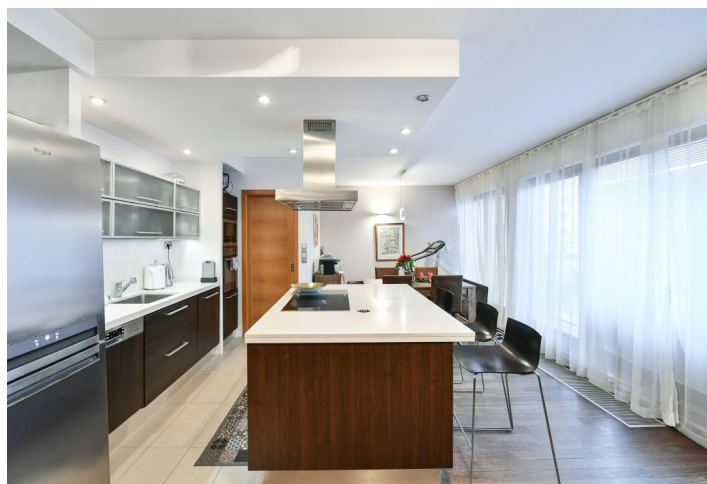
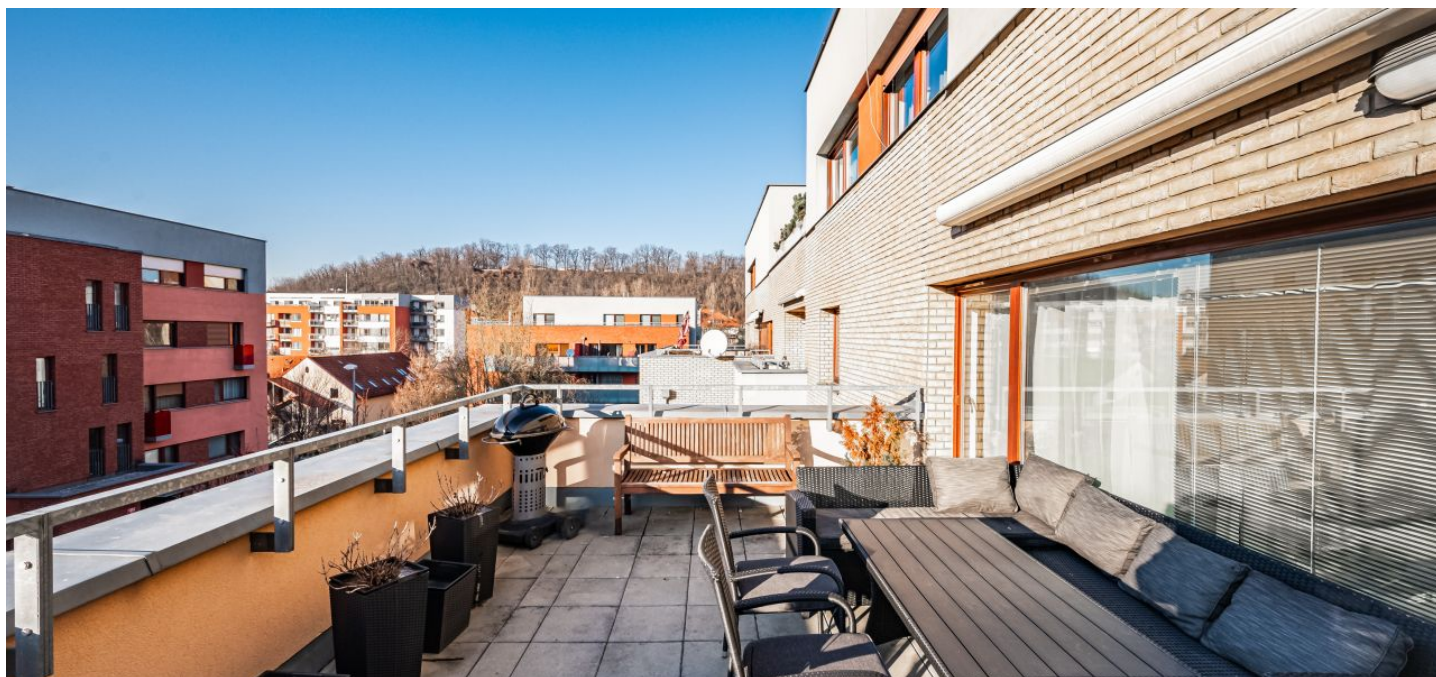




## Apartment Three-bedroom (4+kk)

Sold

123 m<sup>2</sup>, Prague 4, Michle, Tigridova





## Apartment Three-bedroom (4+kk)

**Sold**123 m<sup>2</sup>, Prague 4, Michle, Tigridova

Total area	155 m <sup>2</sup>
Floor area*	123 m <sup>2</sup>
Terrace	32 m <sup>2</sup>
Parking	Two garage parking spaces
Garage	Yes
Cellar	2 m <sup>2</sup>
Service price	8 665 CZK monthly
PENB	C
Reference number	103612

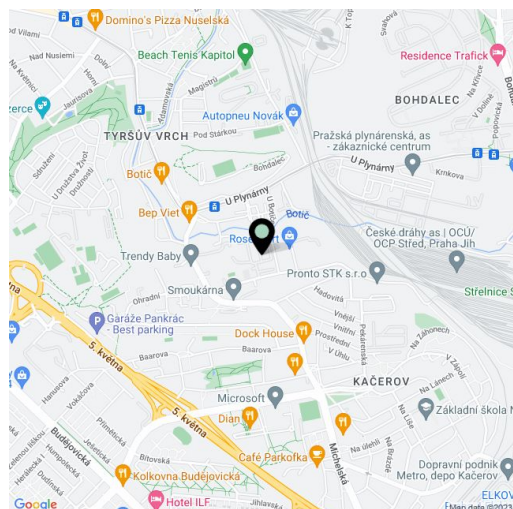
**This spacious, bright apartment with a large terrace and two garage parking spaces is part of a residential complex located in Prague 4 at the junction of Nusle and Michle, near the Botič Stream and Tyršův Hill.**

The layout of the apartment on the 3rd, **floor** consists of **an almost fifty-meter living space** with a kitchen, dining room, and adjoining **spacious terrace**, as well as 3 bedrooms, a bathroom, a separate toilet, a storage room, and a foyer.

The residence was completed in 2007, the building is brick and equipped with an **elevator**. Facilities include **wooden floors** and large **wooden Euro windows** with interior blinds. The kitchen with a central island is equipped with an **induction hob**, hood, electric and microwave oven, dishwasher, and freestanding refrigerator with a freezer. Large built-in cupboards provide **plenty of storage space**. The illuminated terrace can be shaded with a retractable **awning**. Heating is remote. The purchase price includes a **cellar storage unit** and **2 garage spaces**.

The apartment is located in a **green part of Prague 4** near the **Botič Stream** and under **Tyršův Hill**, only 5 minutes by bus from the Budějovická metro station (line C) and 5 minutes by tram from the future Náměstí bratří Synků metro station (line D). A kindergarten and elementary school as well as a **high school** are nearby, and a **fitness center** or the **Na Jezerce Theater** are within a short driving distance.

Floor area 122.78 m<sup>2</sup>, terrace 32 m<sup>2</sup>, cellar 2 m<sup>2</sup>.



\* Size of the unit according to the Housing Act.

The area consists of the sum total of the internal area of every room.





# Apartment Three-bedroom (4+kk)

123 m<sup>2</sup>, Prague 4, Michle, Tigridova

Sold

