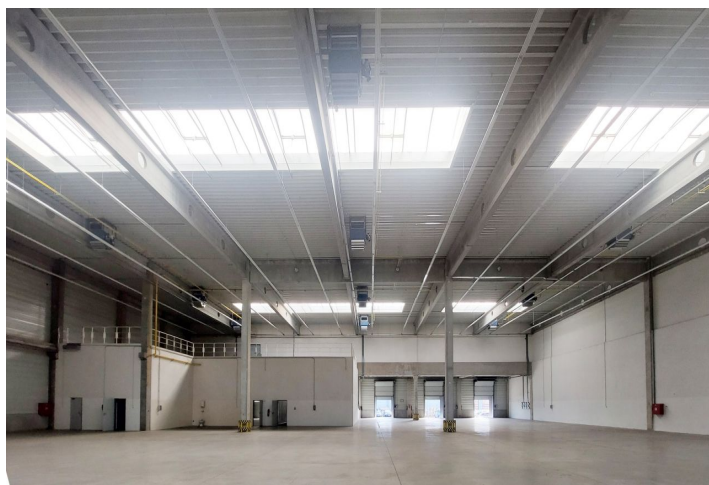
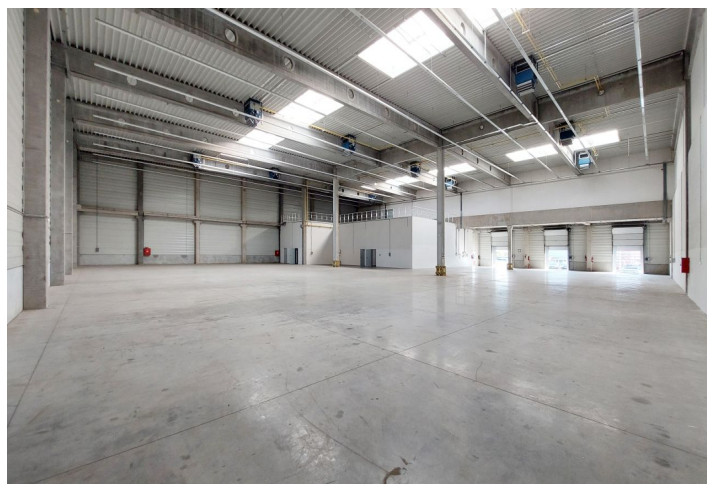
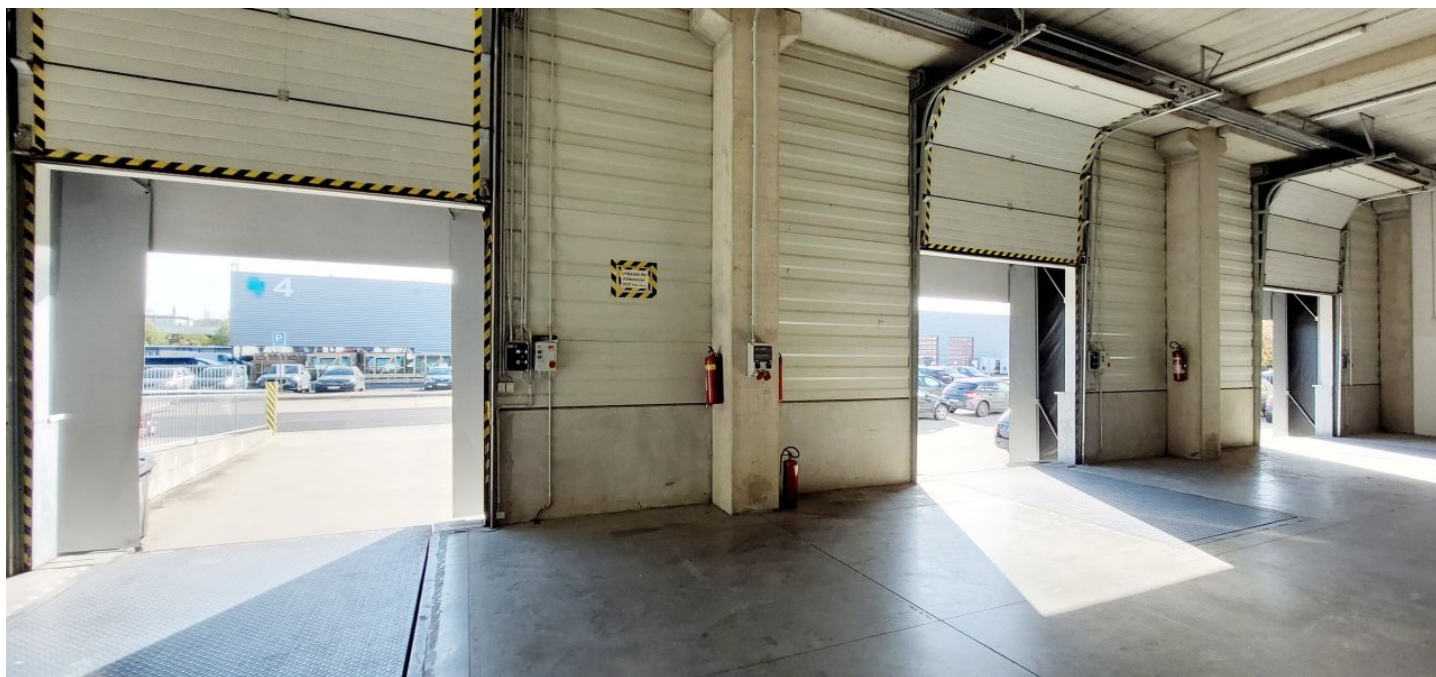




Warehouse space

2 478 m², Praha 6, Ruzyně

Ask for price





Warehouse space

2 478 m², Praha 6, Ruzyně

[Ask for price](#)

Total area	2 478 m ²
Available area for rent	2 478 m ²
Office area	292 m ²
Ceiling height	9 m
Floor loading capacity	5 t/m ²
Column grid structure	—
Structure	Reinforced concrete structure
PENB	G
Reference number	103737

2,186 sq.m. of warehouse and **292 sq.m.** of space for lease in the industrial park situated in close vicinity of the international airport in Prague. The premises are suitable for logistics centers, light manufacturing and business activity. They offer a high standard of equipment, and can be designed based on specific requests and requirements.

Location:

The park is situated in Prague 6 - Ruzyně close to the Prague Ring Road with good connections to the D6 highway in the direction of Karlovy Vary and D5 highway in the direction of Plzeň. Václav Havel International Airport is a 5-minute drive away. Good transport accessibility - a direct bus line to Zličín metro station (line B). Access to the center of Prague within 30 minutes.

Features and Services:

- Flexible units (storage / office / light production / showroom)
- Onsite property management
- 24/7 security service and CCTV
- Park maintenance
- Sufficient parking space

Industrial/Warehouse space:

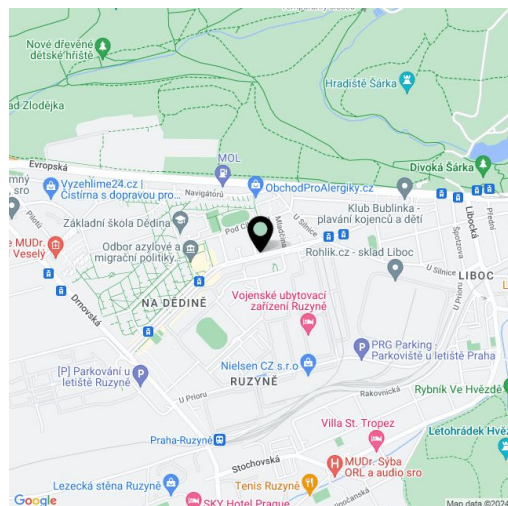
- Min. 1 direct entry to the unit
- Floor loading capacity 5 t/sq.m
- Clear height 9 m
- Column grid 15 m × 24 m
- Light 200 Lux
- Utility connections (water, sewage, gas, electricity)

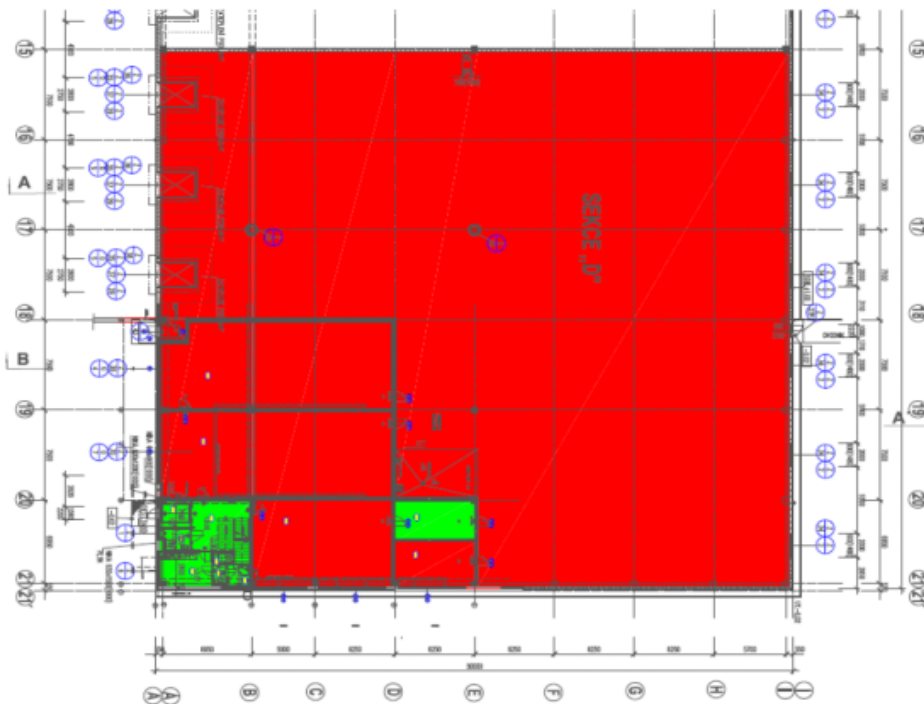
Office:

- Turn key office
- Clear height 2,75 m
- Light 500 Lux
- Air-conditioning
- Carpeting

Available within 3 months.

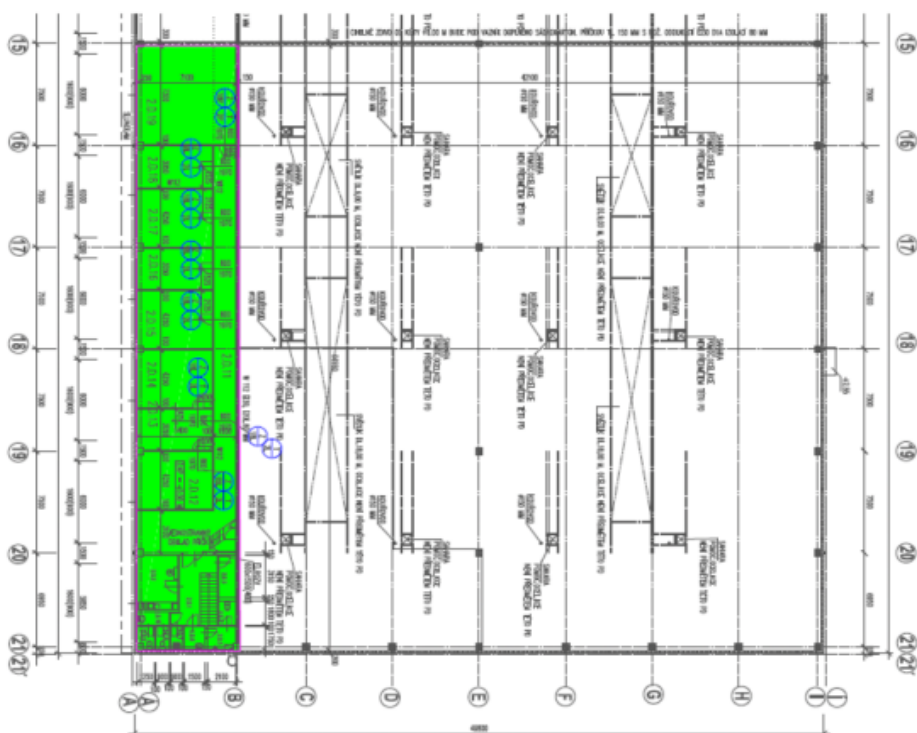
Lessee pays no commission.





WAREHOUSE, 1NP

Premises - warehouse: 2,186 sqm; office & sanitary: 292 sqm
Available: within 3 months



OFFICE, 2NP



Warehouse space

2 478 m², Praha 6, Ruzyně

Ask for price

