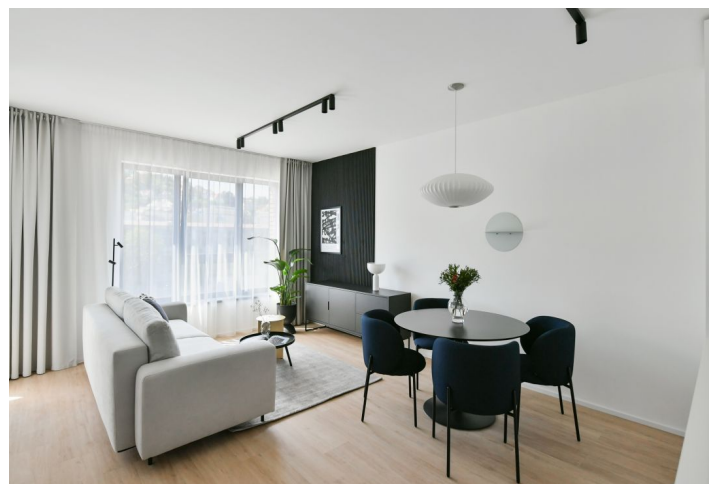




Apartment One-bedroom (2+kk)

Rented

53 m², Prague 5, Smíchov, U Lihovaru





Apartment One-bedroom (2+kk)

Rented

53 m², Prague 5, Smíchov, U Lihovaru

| | |
|------------------|---|
| Total area | 59 m ² |
| Floor area* | 53 m ² |
| Loggia | 6 m ² |
| Parking | Garage parking |
| Garage | Yes |
| Cellar | Yes |
| Service price | Monthly deposit for service charges and utilities is billed separately. |
| PENB | B |
| Reference number | 103768 |
| Available from | Immediately |

Brand new apartment in the new LIHOVAR residential district designed by the Black n'Arch atelier. This is a completely furnished 1-bedroom apartment with an enclosed balcony, situated on the second floor in a residential complex with underground parking and green roofs, in the new Smíchov Riverside area just steps from the left bank of the Vltava river, Čísařská louka, Podolí, or the nearby Dívčí hrady and Děvín. The project is shaped by the industrial heritage of Smíchov and the original refinery boasting preserved original features such as the Erektus chimney and the Distillery. Inspirational amenities include a food market, a gym, Czech Photo Gallery, David Černý's Musoleum art gallery, street art, and Křištof Kintera's Garden of Lights. Set within easy reach of good amenities, a kindergarten, primary and grammar schools, as well as numerous sports and outdoor activities - Čísařská louka Golf, Podolí tennis and swimming, bike paths along the river. With great transport accessibility, the project is located a short tram stop from the Smíchovské nádraží metro station, line B, and has easy connections to the D1 highway to Brno, the D5 motorway to Plzeň and the Václav Havel airport.

The interior features a living room with a fully fitted open plan kitchen and a dining area, a bedroom, a bathroom with a bathtub and a toilet, and an entrance hall. The **enclosed balcony** is accessible from both main rooms.

LOXONE smart home system, heat recovery ventilation, vinyl floors, tiles, built-in wardrobes, central underfloor heating, washing machine, dishwasher, video entry phone, active Internet connection, camera system, lift. A garage parking space is available at CZK 2,500/month + VAT. A cellar is available at an additional fee. Building amenities also include a reception, plus property management and on-site facility management services.

* Area of the unit according to the Civil Code. The area consists of the sum total area of the entire unit bounded by perimeter walls.





Apartment One-bedroom (2+kk)

Rented

53 m², Prague 5, Smíchov, U Lihovaru



Exkluzivní zastoupení pro pronájem bytu
Eva Jilková, +420 257 328 281 +420 724 551 238, info@lihovar.cz

svoboda&williams | CHRISTIE'S
INTERNATIONAL REAL ESTATE

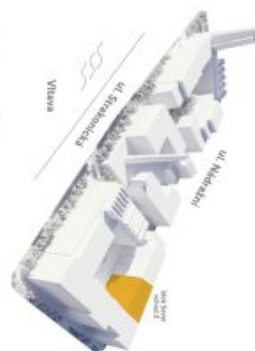
lihovar.cz

Všechny informace (veřejnost, grafická zobrazení, obšarbové popisy) uvedené na této stránce jsou pouze informativní povahy a netvoří právní závazek. Pro bližší informace kontaktujte makléře. Představitel pouze zprostředkává zobrazení. Konečné měřítko v budoucnu podléhá změnám. Závazným podléháním realitace je poskytnutá výhradně autorem dokumentace. Více informací a foto bank bytu a jednotlivých detailů na www.lihovar.cz/realitace nebo 20240210

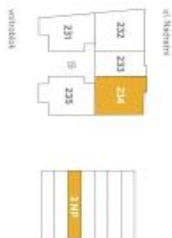


byt 2+KK
53,00 m²
3.NP - Z

234



umístění na podlaží



přehled ploch

| Kód | Záběr | podlaha (v m ²) |
|---------------------------------|--|-----------------------------|
| 234.01 | Záběr | 7,90 |
| 234.02 | Pokoje s kuchyňským koutkem | 24,60 |
| 234.03 | Pokoje | 12,90 |
| 234.04 | Koupelna + WC | 4,50 |
| obytelná plocha jednotky | | 49,90 |
| 234.X | Stavěná konstrukce podlahové plochy jednotky | 3,10 |
| průhlednosti | | 53,00 |
| 234.05 | Lodžie | 5,80 |

energetický štítek B - velmi úsporná

