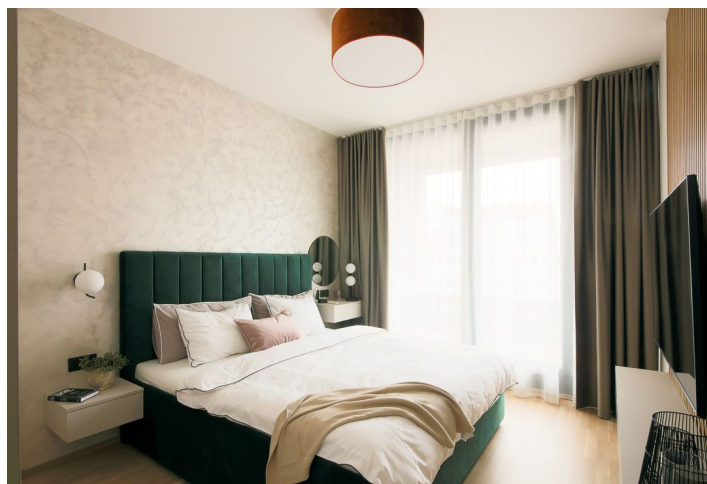




Apartment Three-bedroom (4+kk)

Rented

110 m², Praha 5, Smíchov, Šiklové





Apartment Three-bedroom (4+kk)

Rented

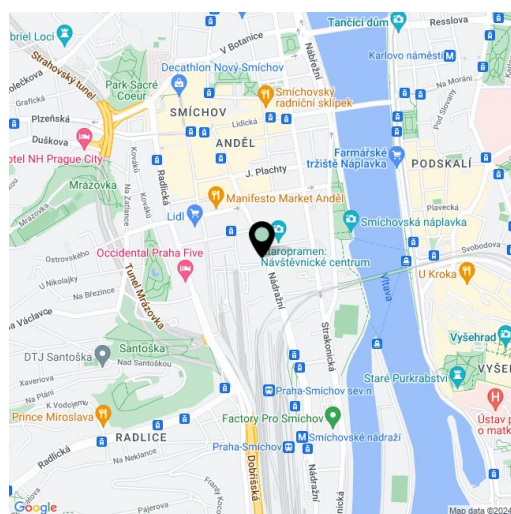
110 m², Praha 5, Smíchov, Šiklové

Total area	117 m ²
Floor area*	110 m ²
Loggia	8 m ²
Parking	Garage parking.
Garage	Yes
Cellar	Yes
Service price	Monthly deposit for services, water, heating: Internet and digital TV CZK 8,000. Electricity is billed separately.
PENB	B
Reference number	103933
Available from	Immediately

This brand new fully furnished 2-bathroom apartment with 2 enclosed balconies is situated on the 2nd floor of the Smíchov City residential building with an elevator and parking. Located close to the Anděl commercial center in Smíchov and a newly arising district with a pedestrian zone, great accessibility by metro and tram, within easy reach of the French School, the Smíchov and Výtoň embankments, and several sports grounds. Within easy reach of rich amenities and services, the Anděl metro station and the Na Knížecí bus terminal.

The interior features a living room with a fully fitted open plan kitchen, a master bedroom with an en-suite bathroom (bathtub, toilet), two bedrooms facing a quiet landscaped courtyard, a family bathroom (walk-in shower, toilet), a utility room, and an entrance hall. All main room have access to one of the **two terraces**.

Heat recovery ventilation, wooden floating floors, tiles, security entry door, built-in wardrobes in the hall and two bedrooms, central heating, washer, dryer, dishwasher, induction cooktop, microwave oven, wine fridge, two TV sets, video entry phone, Internet and cable TV, **cellar**. A **garage parking** space is included.



* Size of the unit according to the Housing Act.

The area consists of the sum total of the internal area of every room.