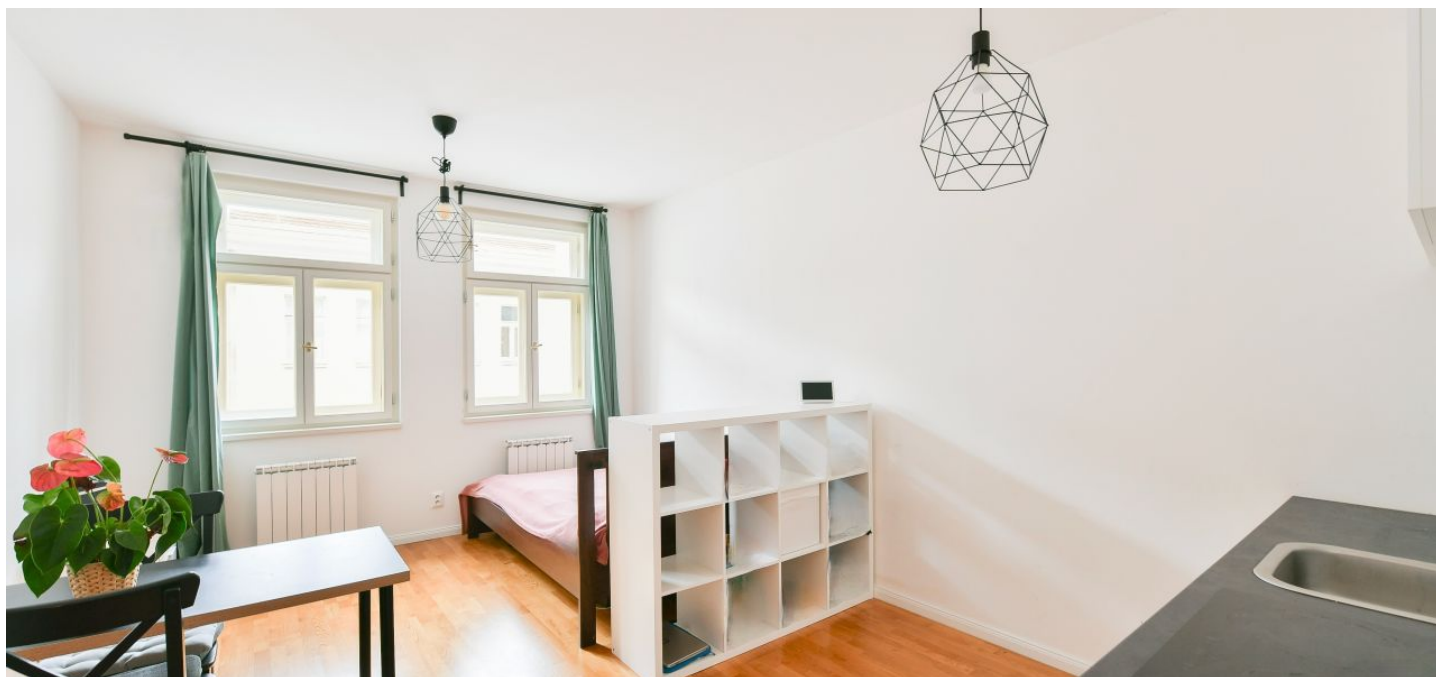




## Apartment Studio (1+kk)

28.3 m<sup>2</sup>, Praha 2, Vinohrady, Záhřebská

Sold





## Apartment Studio (1+kk)

28.3 m<sup>2</sup>, Praha 2, Vinohrady, Záhřebská

Sold

Total area	28 m <sup>2</sup>
Parking	-
Cellar	-
PENB	G
Reference number	104034

This bright, southeast-facing apartment is on the 4th floor of a residence created by the complete reconstruction of a historic apartment building with a Neo-Renaissance facade located in a popular part of Vinohrady, in an excellently accessible place on Záhřebská Street near a square with an iconic fountain.

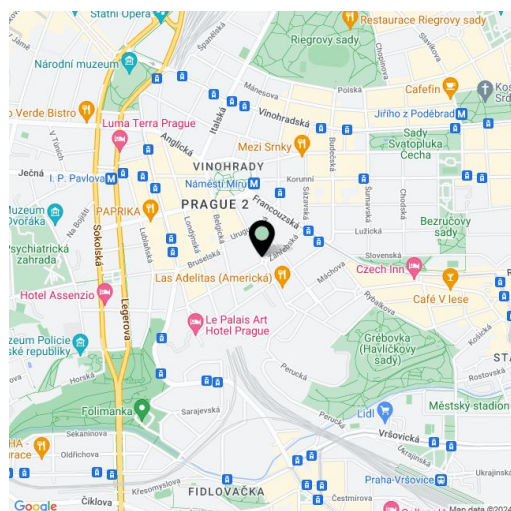
The practical layout includes a living room with a kitchen, an entrance hall, and a bathroom (shower, toilet, sink, washing machine connection). The living room is illuminated by two large southeast-facing windows.

The apartment and building built in the second half of the 19th century were completely renovated in 2020. The floor in the apartment is **wooden**; casement windows. The kitchen has basic appliances (hob, oven, sink).

A great location with one of **the most sought-after addresses in Prague** allows you to have everything you need at your fingertips. With a vibrant social scene, Vinohrady is full of **cosy cafes, bistros, and fine dining** restaurants, shopping opportunities are problem-free, and the surrounding area offers **rich cultural activities**. There is a tram stop only a short distance away, and the Náměstí Míru metro station (line A) is within walking distance. The nearby **romantic Havlíček Gardens** offers calming greenery for relaxation.

Floor area 28.3 m<sup>2</sup>.

The apartment is rented until September 2024.



\* Area of the unit according to the Civil Code. The area consists of the sum total area of the entire unit bounded by perimeter walls.



## Apartment Studio (1+kk)

28.3 m<sup>2</sup>, Praha 2, Vinohrady, Záhřebská

Sold

