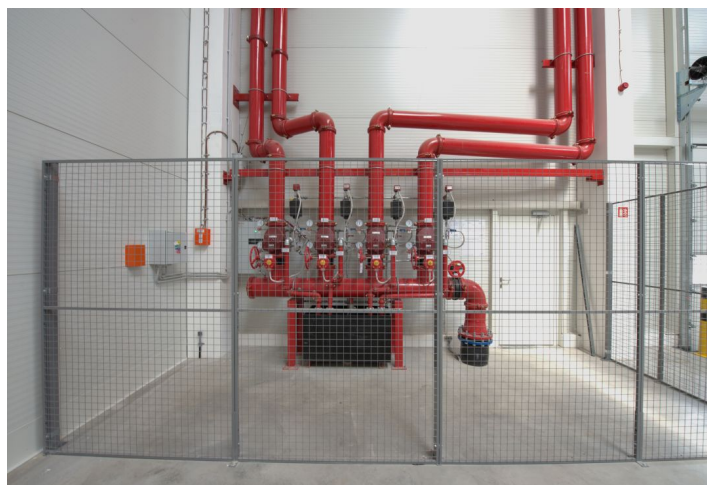




Industrial space

16 600 m², Litoměřice, Lovosice, Tereziňská

Ask for price





Industrial space

16 600 m², Litoměřice, Lovosice, Tereziňská

Ask for price

Total area	16 600 m ²
Available area for rent	16 600 m ²
Ceiling height	10 m
Floor loading capacity	5 t/m ²
Column grid structure	—
Structure	Reinforced concrete structure
PENB	B
Reference number	104045

This new industrial park offers **16,600 sq.m.** of warehouse, industrial and office premises for lease located in city Lovosice 50 km from Prague. The project will consists of 4 warehouse buildings.

Available within 8 months.

Location:

Strategic location on D8 highway (Prague – Ústí nad Labem - Dresden), EXIT 45. Lovosice centre 1 km. Bus stop on site.

Features and Services:

- 24/7 manned security in the area
- Park maintenance

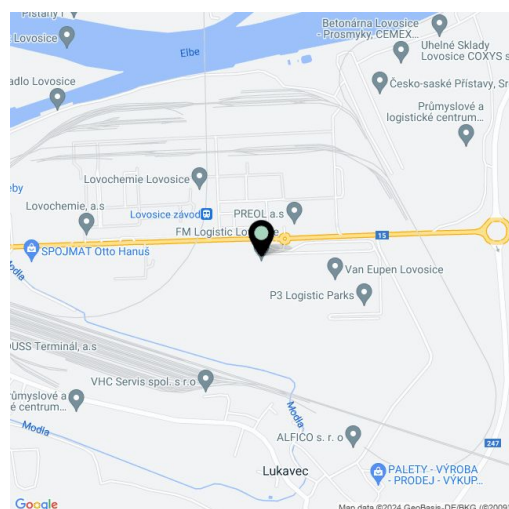
Warehouse/Industrial space:

- Flexible layout with units from 1,500 sq.m. to large warehouse space up to 90,000 sq.m.
- Min.1 loading dock per 800 sq.m
- Drive – in access
- Floor loading capacity 5-8 t/sq.m
- Clear height 6-10 m
- Truck yard 35-45 m
- Column grid structure 24 x 12 m
- Possible cross docking
- Infa-heating or heating blowers
- Sprinkler system

Office:

- Flexible office layout
- Air-conditioning

Rental and service charges listed without VAT. Lessee pays no commission.





Industrial space

16 600 m², Litoměřice, Lovosice, Tereziňská

Ask for price





Industrial space

16 600 m², Litoměřice, Lovosice, Terezinská

Ask for price

