



Warehouse space

8 902 m², Plzeň-sever, Myslinka, Myslinka

Ask for price





Warehouse space

8 902 m², Plzeň-sever, Myslinka, Myslinka

[Ask for price](#)

Total area	8 902 m ²
Available area for rent	8 902 m ²
Office area	507 m ²
Min. area	3 000 m ²
Ceiling height	10 m
Floor loading capacity	5 t/m ²
Column grid structure	—
Structure	Reinforced concrete structure
PENB	G
Reference number	104053

8,394 sq.m. of warehouse, industrial and **507 sq.m.** of office space for lease in Pilsen-North. Premises are suitable for logistics, light manufacturing or retailers and can be built on a turnkey basis according to the client's wishes. Available within 12 months after signing the contract.

Location:

The park is located approximately 12 km from Plzeň city centre, on exit 93 of the D5 motorway (Prague – Plzeň – Germany), on the edge of village Myslinka. The bus stop is located directly on the premises. Railway station 4 km and Cargo rail terminal 3 km from the park.

Features and Services:

- High standards of buildings

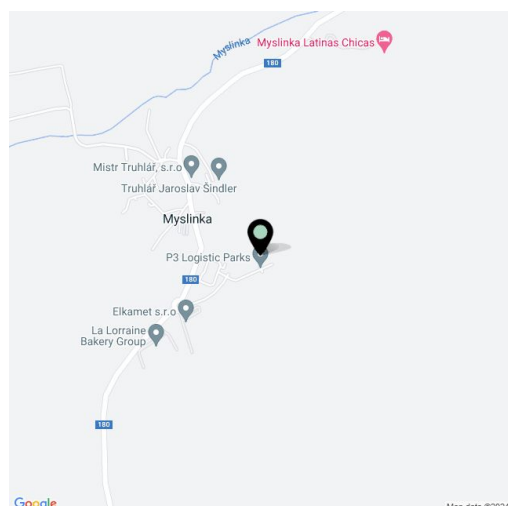
Industrial/Warehouse space:

- Turn-key concept
- Flexible unit layouts with units from 3,000 sq.m.
- A minimum of 1 loading ramp with one loading bridge per 1,000 sq.m. of warehouse area
- Floor loading capacity: 5 t/m²
- Clear height of storage areas: 10 m
- Column module: 24 × 12 m
- Truck yard: 35 m
- Possible cross-docking
- Intelligent Lighting – average lighting level 200 LUX
- Infra heating, water heating, gas blowers
- Sprinkler system (ESFR)

Office:

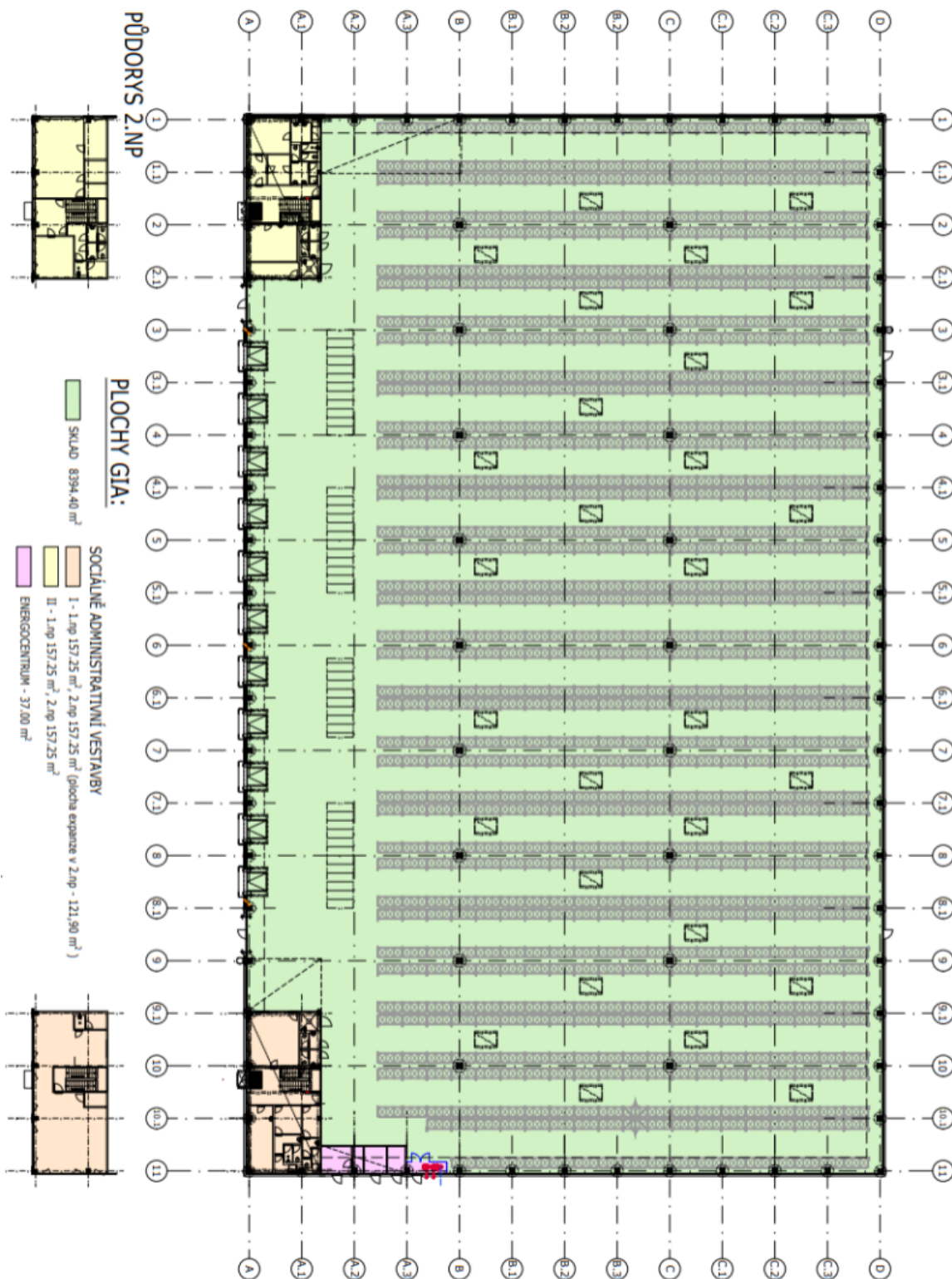
- Flexible office layout
- Air-conditioning

Rental and service charges listed without VAT. Lessee pays no commission.





8 902 m², Plzeň-sever, Myslinka, Myslinka

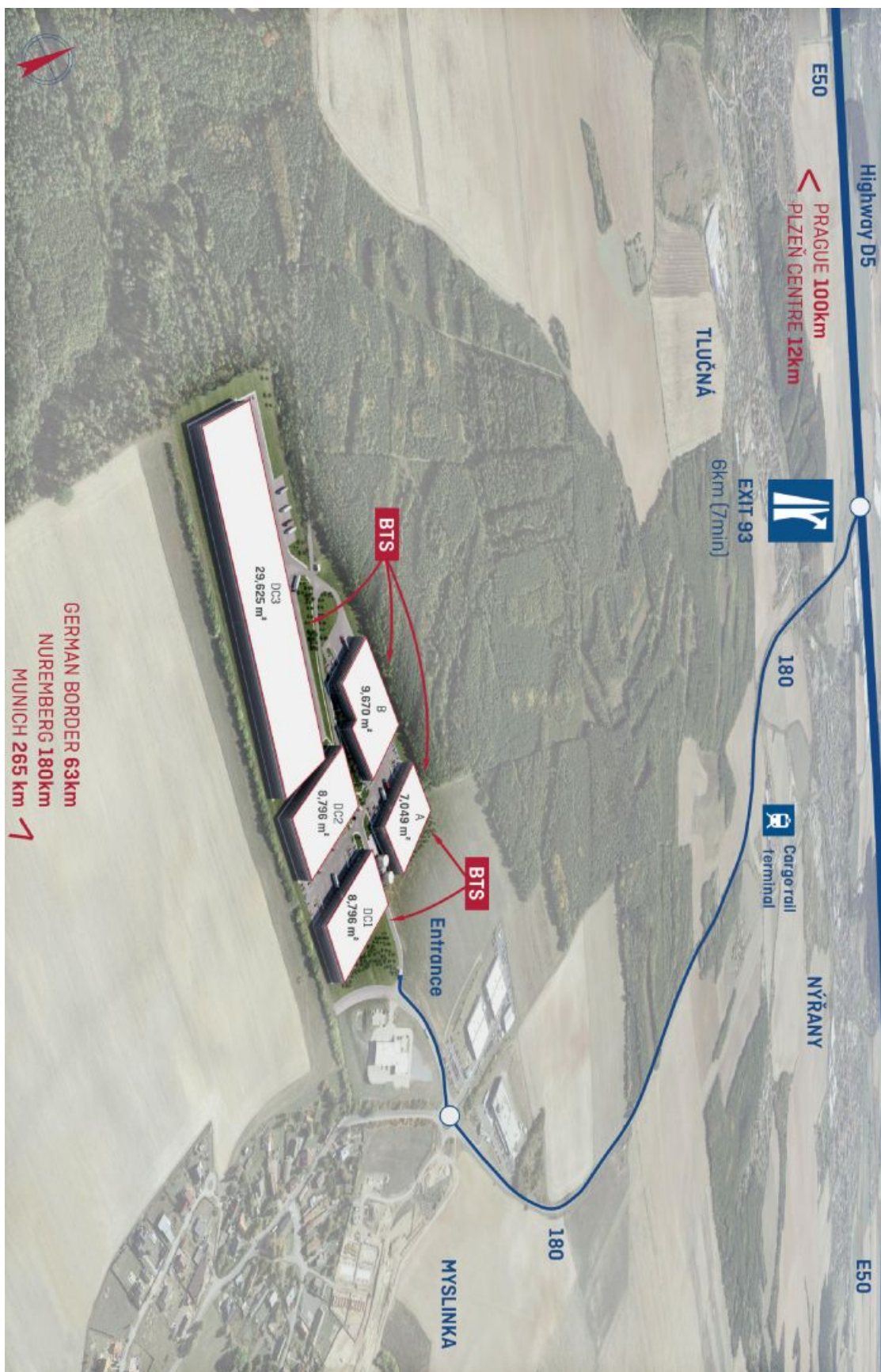




Warehouse space

8 902 m², Plzeň-sever, Myslinka, Myslinka

Ask for price





Warehouse space

8 902 m², Plzeň-sever, Myslinka, Myslinka

Ask for price

