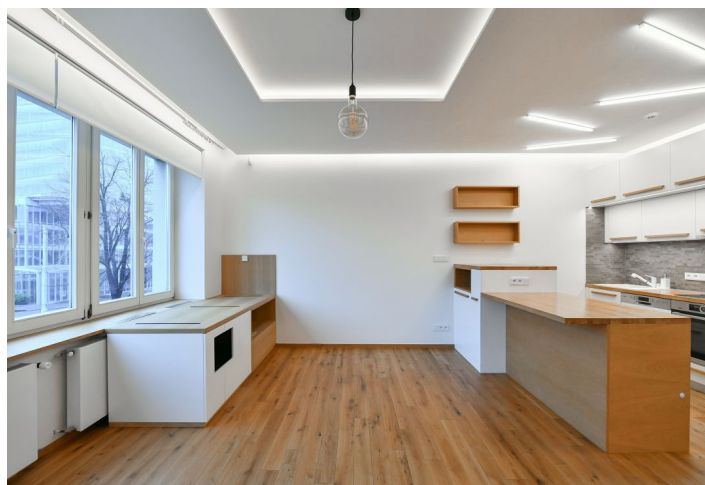




## Apartment Three-bedroom (4+kk)

Rented

96 m<sup>2</sup>, Prague 6, Bubeneč, Rooseveltova





## Apartment Three-bedroom (4+kk)

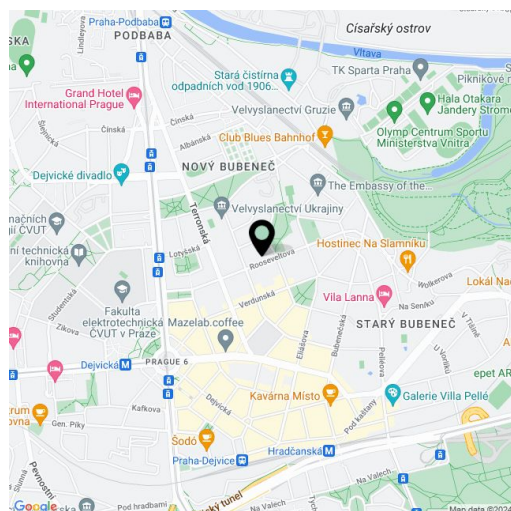
**Rented**96 m<sup>2</sup>, Prague 6, Bubeneč, Rooseveltova

Total area	117 m <sup>2</sup>
Floor area*	96 m <sup>2</sup>
Terrace	16 m <sup>2</sup>
Loggia	6 m <sup>2</sup>
Parking	Garage parking.
Garage	Yes
Cellar	Yes
Service price	Monthly deposit for services and water: CZK 3000. Electricity and gas are billed separately.
PENB	G
Reference number	104070
Available from	01.04.2026

This completely refurbished unfurnished apartment with an enclosed balcony, a terrace, and parking is situated on the 1st floor of a well-maintained Functionalist building with a nicely landscaped quiet courtyard with a playground and no elevator. Located in the Prague 6 prestigious embassy quarter with full amenities and services in close vicinity, and with very quick access to the city center, the airport, and international schools. Conveniently located a few minute's walk from the Dejvická metro station, and within walking distance of Stromovka Park and the Prague Castle. Nearby is also the Czech Technical University campus and the Czech National Library of Technology.

The interior features a living room with a fully fitted open plan kitchen and enclosed balcony, two bedrooms with built-in wardrobes, a study/bedroom with a built-in wardrobe and underfloor heating, a bathroom (bathtub, walk-in shower), a separate toilet, and an entrance hall with built-in wardrobes. The terrace (facing the courtyard) is accessible from the study and bathroom.

Air-conditioning, heat recovery ventilation, smart home system, hardwood floors, heated tiles, ample built-in storage, interior roller blinds, foils in windows, gas boiler, washing machine, dishwasher, induction cooktop, steam oven, microwave oven, alarm, 2 cellars. An on-site garage parking space is available at CZK 3,500 per month.



\* Size of the unit according to the Housing Act. The area consists of the sum total of the internal area of every room.



# Apartment Three-bedroom (4+kk)

Rented

96 m<sup>2</sup>, Prague 6, Bubeneč, Rooseveltova

