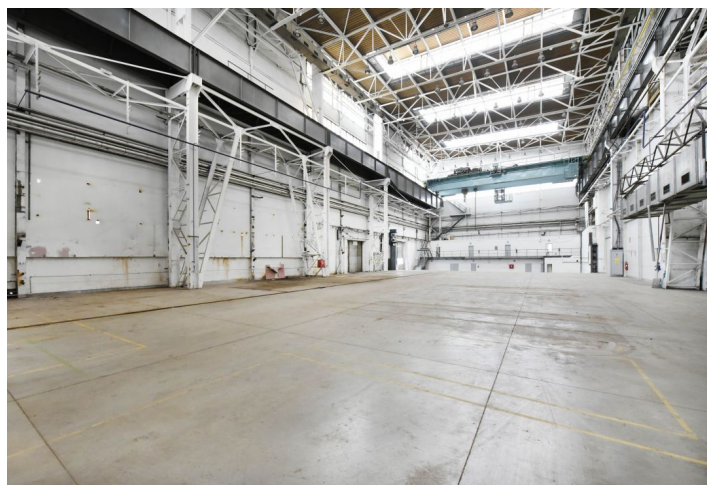
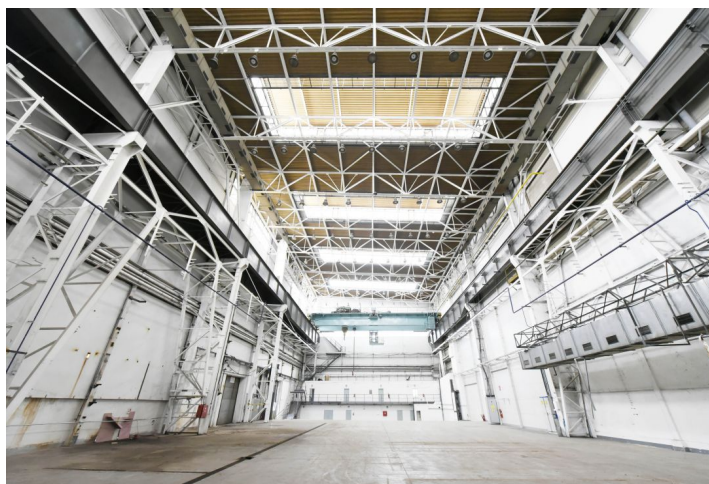




Industrial space

1980 m², Plzeň-město, Plzeň, Na Pomezí

Ask for price





Industrial space

1 980 m², Plzeň-město, Plzeň, Na Pomezí

Ask for price

Total area	1 980 m ²
Available area for rent	1 980 m ²
Office area	77 m ²
Ceiling height	22 m
Floor loading capacity	10 t/m ²
Column grid structure	—
Structure	Steel structure
PENB	G
Reference number	104072

1,903 sq.m. of industrial, warehouse and **77 sq.m.** of office space for lease in the industrial area situated in Pilsen. The premises are suitable for light and heavy production and storage. They provide a high standard and the equipment can be adapted to the client's requirements.

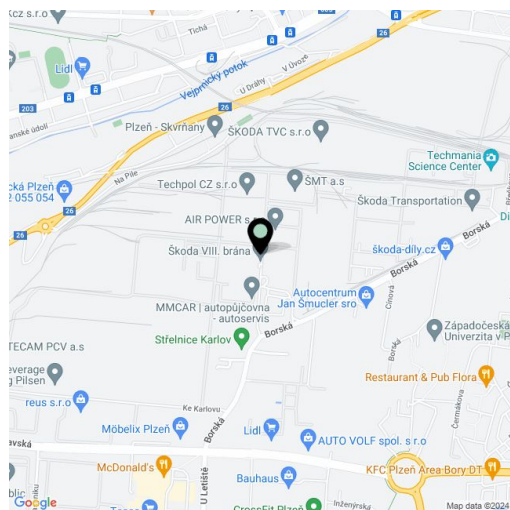
Location:

The park is located in Pilsen, 8 km to the EXIT 80 on D5 Highway. Public transport bus stop 100 m close.

Features and Services:

- Clear height up to 22 m
- Loading ramp built-in
- 1 gate: 5.0 x 5.0 m
- direct entry
- 63 t crane with remote control
- Increased Floor loading capacity up to 10 t/sq.m.
- Sufficient electricity input in the order of MW
- Technical gas
- Hot water and steam available from powerstation
- Parking places: 10+

Lessee pays no commission.





Industrial space

1980 m², Plzeň-město, Plzeň, Na Pomezí

Ask for price

