





Retail space

Brno, Štýřice, Londýnské náměstí

€ 12.50 / m² | CZK 314 / m²

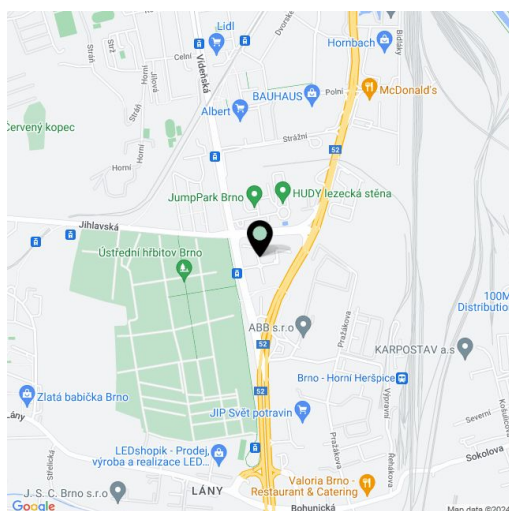
Service price	115 CZK monthly per m ²
Available area	210 m ²
Parking	EUR 55 / pp / month
PENB	G
Reference number	104095

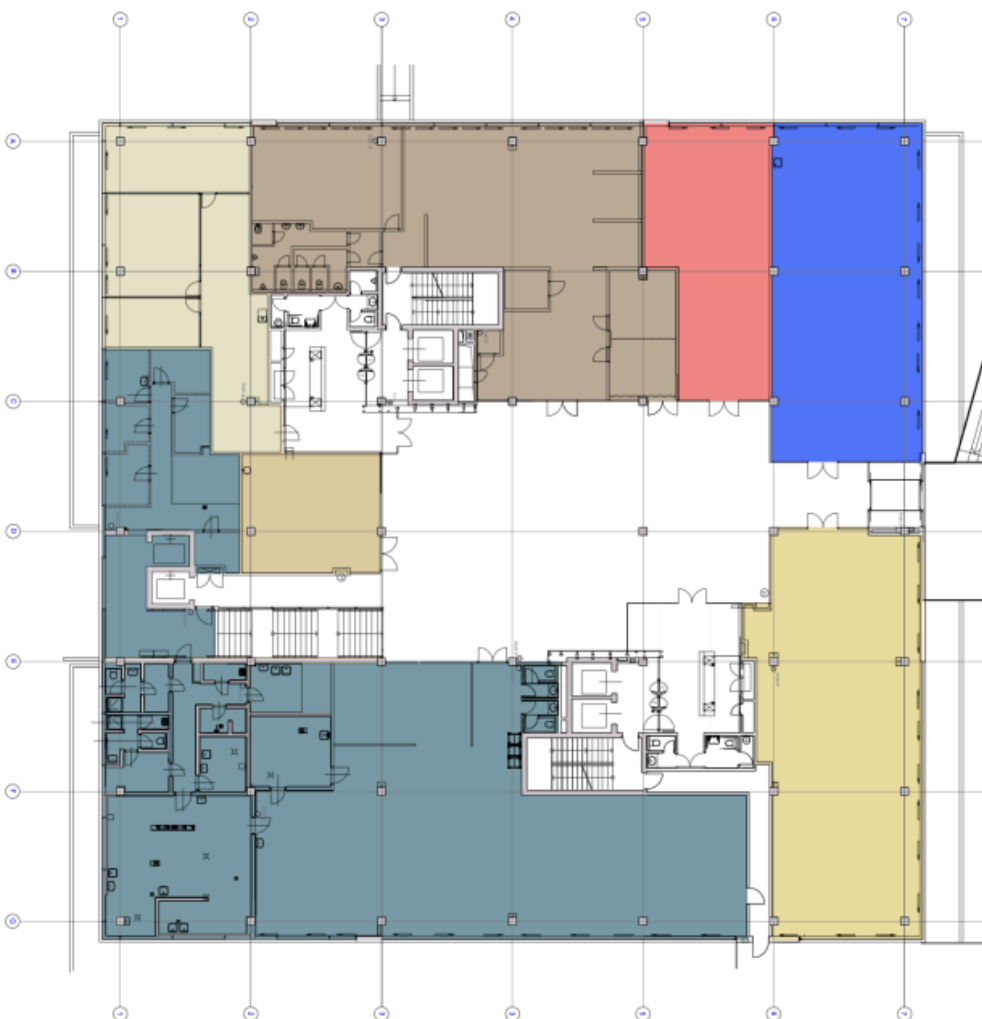
Retail space for lease with store windows facing the busy Videňská street, located on the ground floor of an administrative complex. Monthly deposit of 115 CZK/m²/month includes utility charges including direct consumption deposit. Possibility of parking spaces.

Location:

Very good accessibility by car and public transport with excellent connection to the motorway. The bus and the tram stop are located directly in front of the building. Brno-Tuřany International Airport is accessible within 10 minutes by car.

Rental and service charges are listed without VAT. Lessee pays no commission.





SITUACE / SITE SCHEME



209,80 m²

BUDOVA / BUILDING A