



House Four-bedroom (5+kk)

Rented

113 m², Prague 5, Radotín, Otěšinská





House Four-bedroom (5+kk)

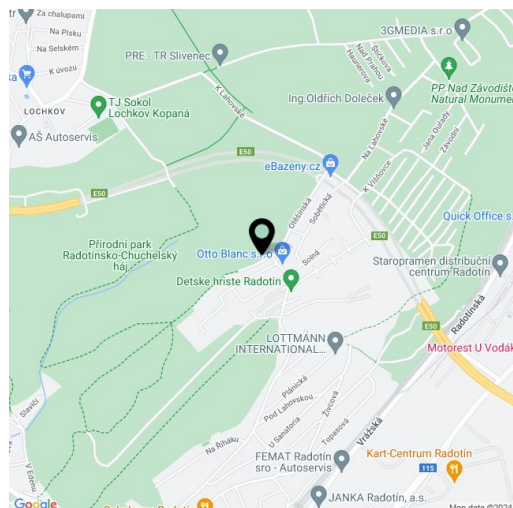
Rented113 m², Prague 5, Radotín, Otěšinská

Plot	270 m ²
Foot print	76 m ²
Garden	194 m ²
Parking	-
Cellar	-
Service price	Deposit for utilities CZK 5,500.
PENB	B
Reference number	104120
Available from	Immediately

This unfurnished 2-bathroom semi-detached house with lovely views of the green surroundings is located on a quiet street in a peaceful residential area in Radotín, on the edge of Slavičí Valley nature park, 15 minutes from the Smíchovské nádraží Railway Station. Radotín has complete amenities including a nursery and a primary school, a supermarket, restaurants, and a cinema, plus easy access to a golf course, an equestrian club, and a river spa. There is a bus stop in front of the house.

The ground floor features a living room with a fully fitted open plan kitchen and access to the terrace and garden, a guest bedroom/office, a guest toilet, a laundry/boiler room, a pantry, and an entrance hall with built-in wardrobes. The first floor offers three bedrooms with built-in wardrobes, an en-suite bathroom (walk-in shower, toilet), and a family bathroom (bathtub, toilet).

Laminate floors, tiles, security entry door, gas boiler, built-in wardrobes, blinds, washer, dryer, dishwasher, microwave oven, alarm, garden shed. **Two parking spaces** are available in front of the house.

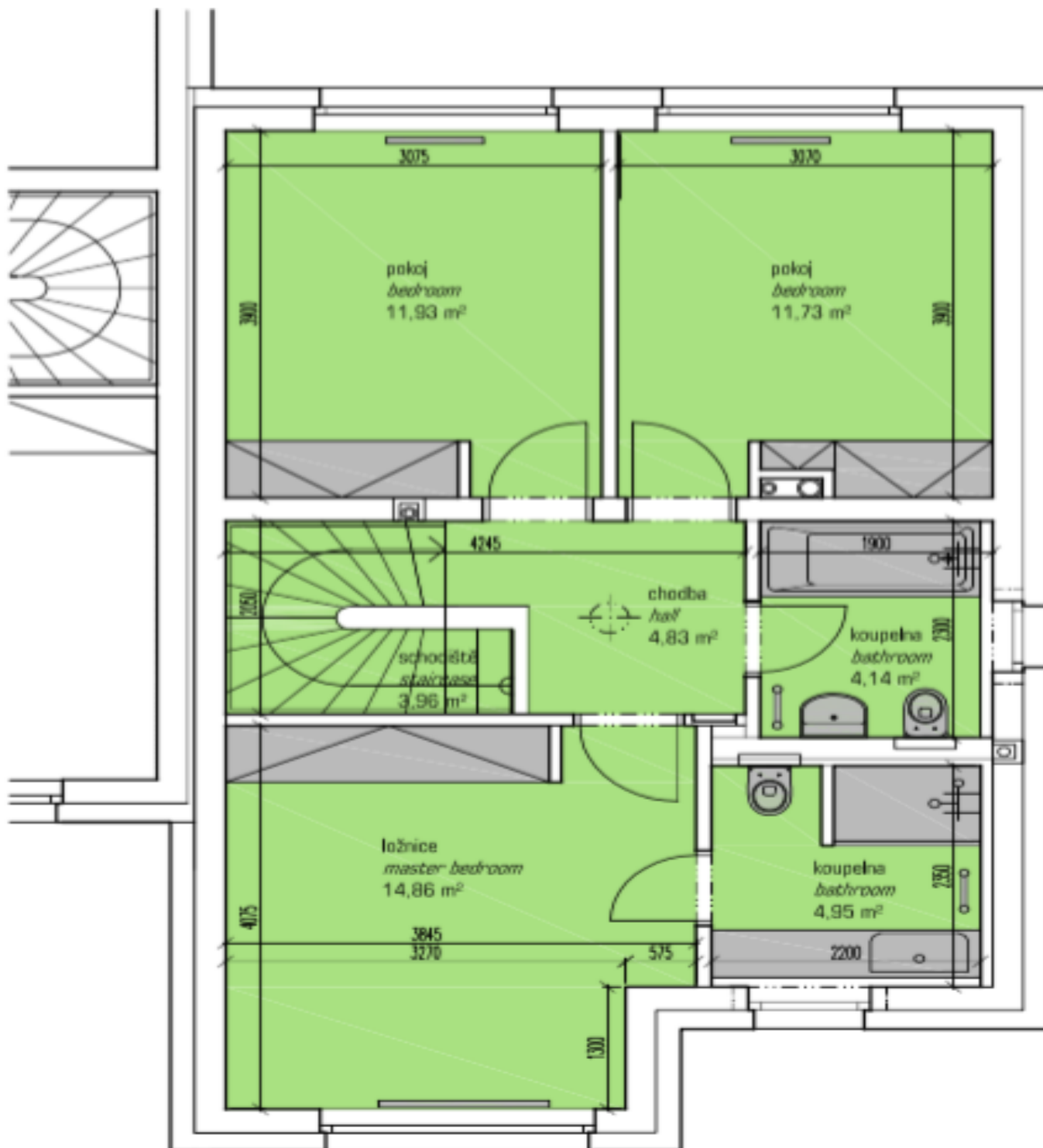




House Four-bedroom (5+kk)

Rented

113 m², Prague 5, Radotín, Otěšinská



DŮM D / HOUSE D / celková užitná plocha / total surface : 113,49 m²
2.NP / 2nd floor / užitná plocha / surface : 52,44 m²

