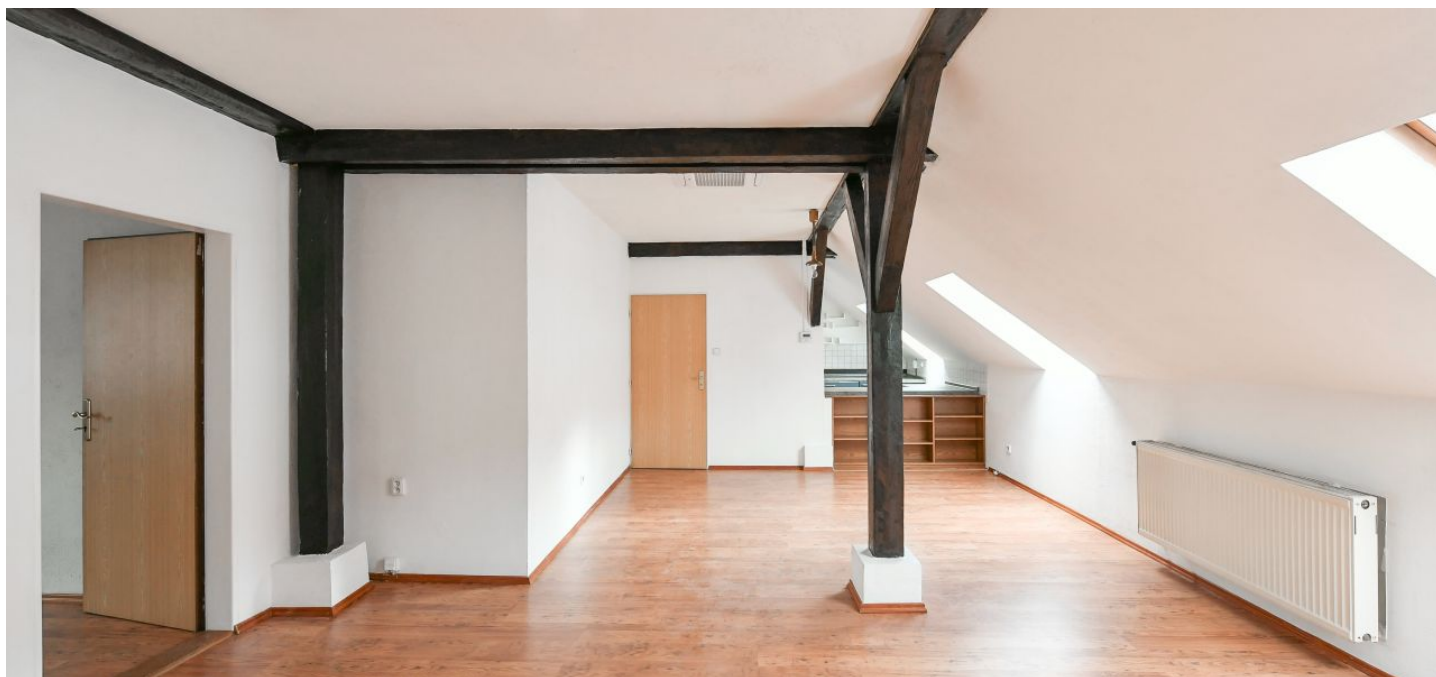




Apartment One-bedroom (2+kk)

Rented

70 m², Prague 5, Smíchov, Jindřicha Plachty





Apartment One-bedroom (2+kk)

Rented

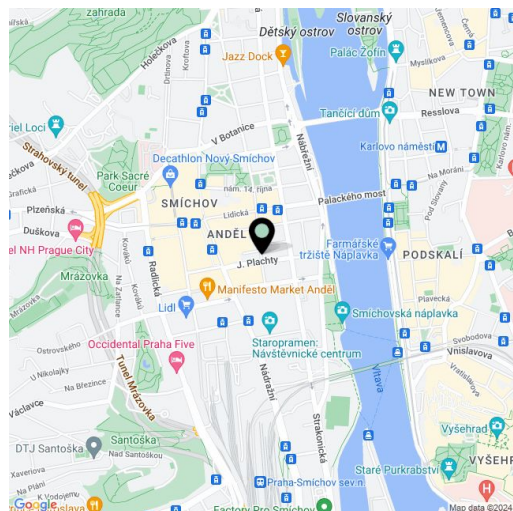
70 m², Prague 5, Smíchov, Jindřicha Plachty

Total area	70 m ²
Parking	Garage parking in the opposite building.
Garage	Yes
Cellar	Yes
Service price	Monthly deposit for services and water: CZK 1,500 per person. Electricity and gas are billed separately (transferred to the tenant).
PENB	G
Reference number	104152
Available from	Immediately

This unfurnished attic apartment with parking available in the building across the street is situated on the 4th topmost floor of a well-maintained, renovated Art Nouveau building with an elevator. Located on a quiet street just moments from the Vltava riverbank, with quick access to the city center, and a short walk to the Nový Smíchov commercial and entertainment center, with multiple tram lines and the Anděl metro station (line B).

The interior features a living room with a dining area, a partially separated fully fitted kitchen, a bedroom facing a quiet courtyard, a bathroom (large walk-in shower, bidet, toilet), a storage room, and an entrance hall.

Air-conditioning in the living room and bedroom, laminate floors, tiles, gas boiler, washing machine, dishwasher, **cellar**. A **garage parking** space in the building opposite is available at an additional fee.



* Size of the unit according to the Housing Act.

The area consists of the sum total of the internal area of every room.