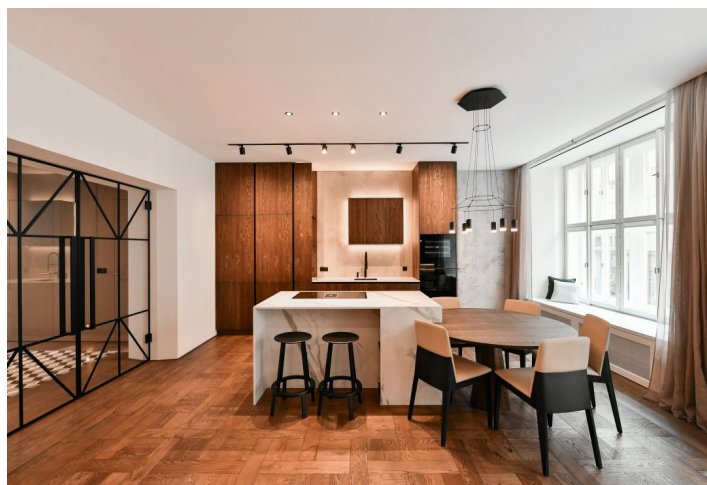
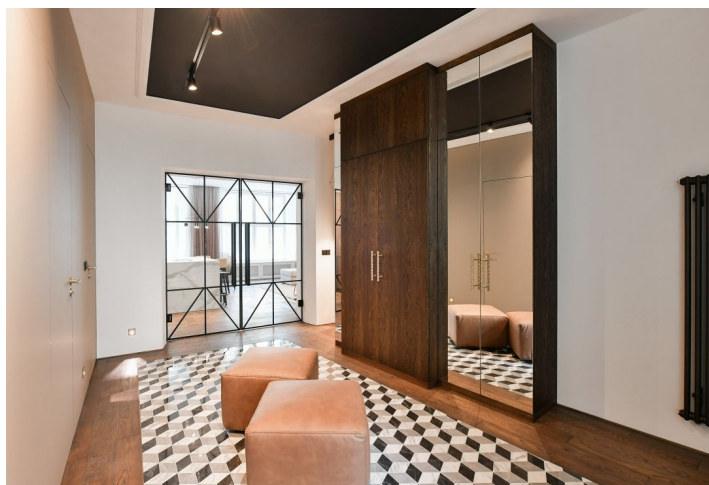
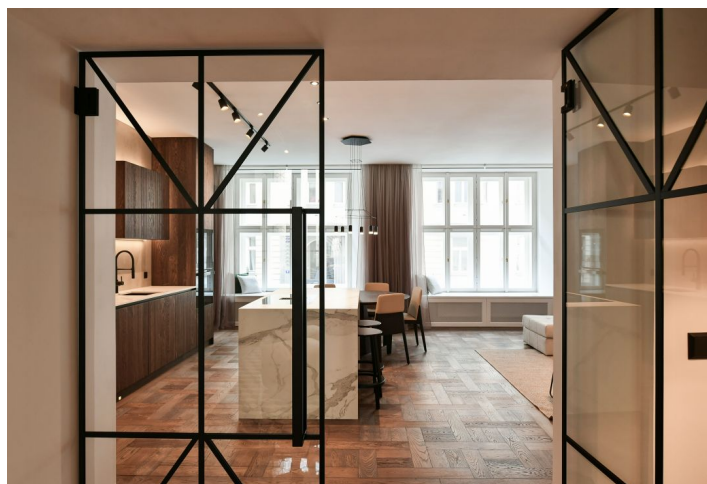
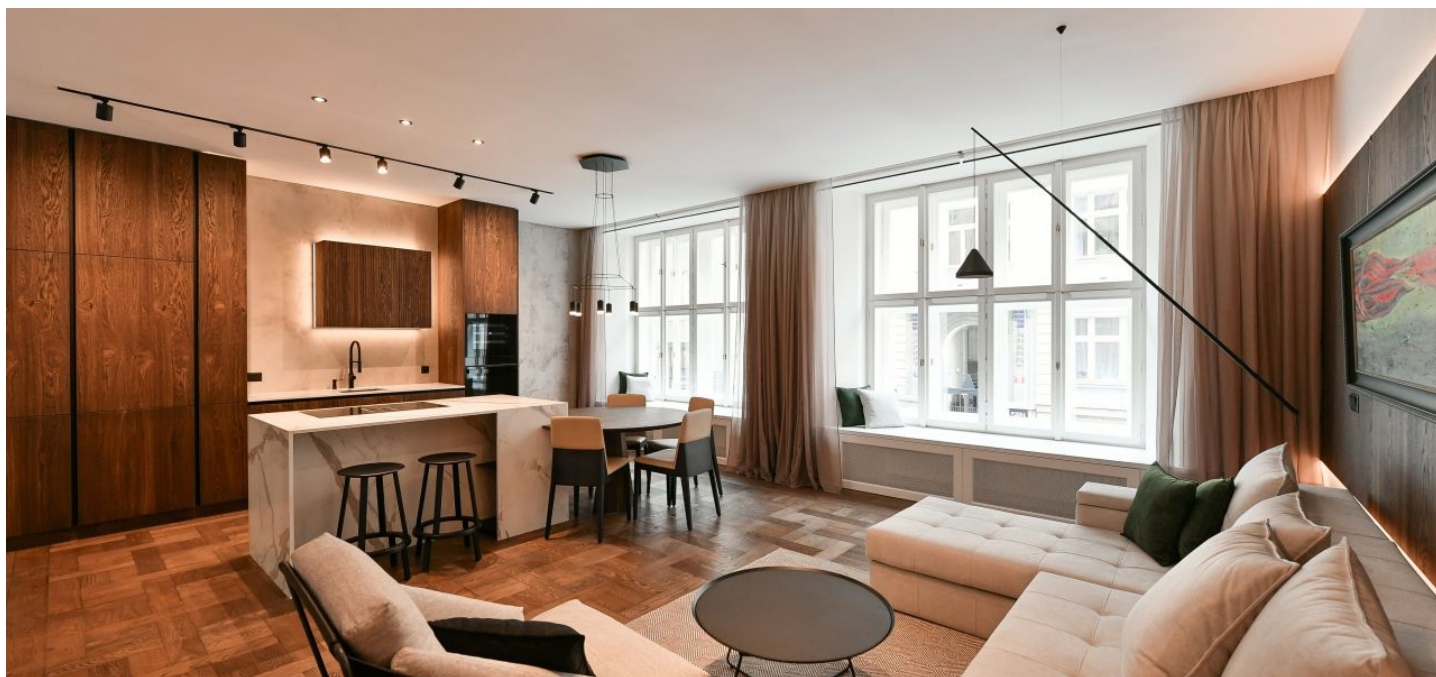




Apartment Two-bedroom (3+kk)

Rented

103 m², Prague 1, Staré Město, Elišky Krásnohorské





Apartment Two-bedroom (3+kk)

Rented

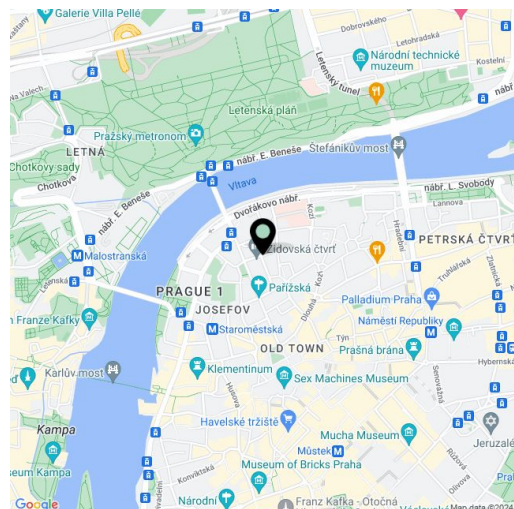
103 m², Prague 1, Staré Město, Elišky Krásnohorské

| | |
|------------------|---|
| Total area | 106 m ² |
| Floor area* | 103 m ² |
| Winter garden | 3 m ² |
| Parking | - |
| Cellar | Yes |
| Service price | Monthly deposit for services and water: CZK 3,000. Electricity and gas are billed separately. |
| PENB | Not required |
| Reference number | 104167 |
| Available from | Immediately |

This expensively renovated furnished 2-bathroom apartment with a winter garden and an interior designed by an architect down to the last detail to correspond with the character of a corner Cubist building from the 1920s is located in an attractive area in Old Town close to Pařížská Street, away from the main tourist routes, yet in the immediate vicinity of many important monuments. The area consists of an exceptional combination of wide boulevards built at the turn of the 19th and 20th centuries and the original winding streets of the former Jewish quarter. The district offers good amenities as well as a wide selection of restaurants, cafes, and clubs. Excellent transport accessibility is ensured by tram lines from the Faculty of Law stop and the Staroměstská metro station (line A). The nearby gardens of the St. Agnes Monastery offer opportunities for relaxation amongst the greenery, and you can walk across the bridge and up the steps to Letenské Sady Park.

The interior consists of a living room with a dining area and an fully fitted open plan kitchen, a bedroom with an en-suite bathroom, a second bedroom, an elegant entrance hall, a **winter garden**, a separate toilet, and a bathroom accessible from the hall as well as the second bedroom.

First-class materials and equipment, hardwood floors, marble tiles in the bathrooms, walls decorated with MT design concrete-epoxy coverage, new windows, **designer bathrooms** fitted with sanitary ware from the Flaminia Italian brand, custom-made kitchen, Siemens, AEG, and Faber kitchen appliances, gas boiler, **cellar**, elevator. All the interior elements, including the pattern on the glass doors, match the unique renovated **Cubist elements** in the common areas of the building.



* Size of the unit according to the Housing Act.

The area consists of the sum total of the internal area of every room.



Apartment Two-bedroom (3+kk)

Rented

103 m², Prague 1, Staré Město, Elišky Krásnohorské

