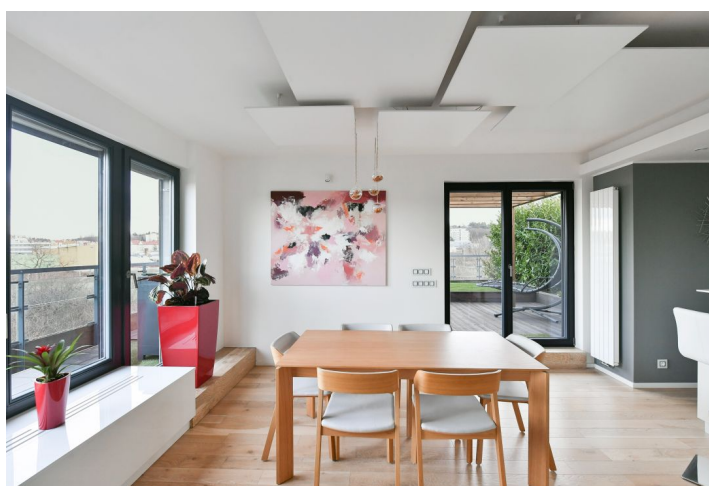




## Apartment Two-bedroom (3+kk)

Rented

106 m<sup>2</sup>, Praha 8, Libeň, V mezíhoří





## Apartment Two-bedroom (3+kk)

Rented

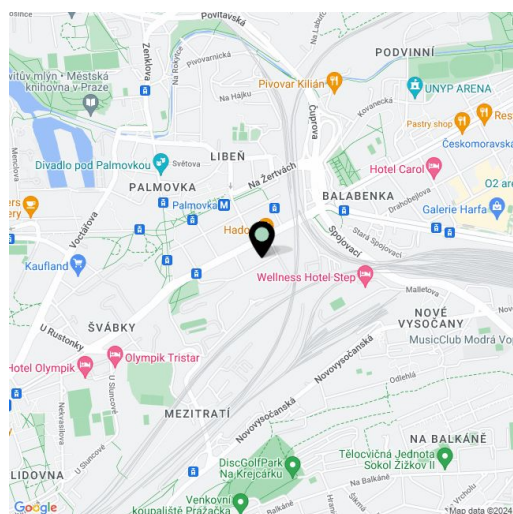
106 m<sup>2</sup>, Praha 8, Libeň, V mezihodí

Total area	206 m <sup>2</sup>
Floor area*	106 m <sup>2</sup>
Terrace	100 m <sup>2</sup>
Parking	Garage parking.
Garage	Yes
Cellar	Yes
Service price	Monthly deposit for services, water, and heating: CZK 6,500. Electricity is billed separately.
PENB	G
Reference number	104214
Available from	Immediately

Boasting a wraparound terrace and far-reaching views, this top standard fully furnished attic apartment with 2 bathrooms is situated on the 8th floor of a contemporary residential project with a camera system, a central atrium, a playground, water features, and underground parking. Located in a quiet part of Libeň, Prague 8, with full amenities within walking distance and easy access to the city center. The Palmovka metro station is a just five-minute walk away.

The interior features a living room with a fully fitted open plan kitchen and dining area, a master bedroom with an en-suite bathroom (large walk-in shower, toilet) and built-in wardrobes, a bedroom/study with a built-in wardrobe, a fitted **walk-in closet**, a family bathroom (bathtub), a separate toilet, and an entrance hall with built-in wardrobes. The **terrace** is accessible from all main rooms.

**High standard equipment, air-conditioning, FIBARO smart home system** (tablet operated), **hardwood floors**, tiles, ample built-in storage, automatic exterior security roller blinds, central heating, underfloor heating in the bathrooms, Miele washer and dryer, Siemens kitchen appliances, dishwasher, induction cooktop, microwave oven, awning and garden furniture on the terrace, 3 TVs, **cellar**. A **garage parking** space is included.



\* Size of the unit according to the Housing Act.  
The area consists of the sum total of the internal area of every room.