



## Logistic park

3 777 m<sup>2</sup>, Praha-západ, Tuchoměřice, U Špejcharu

Ask for price





## Logistic park

3 777 m<sup>2</sup>, Praha-západ, Tuchoměřice, U Špejcharu

**Ask for price**

Total area	3 777 m <sup>2</sup>
Available area for rent	3 777 m <sup>2</sup>
Ceiling height	7.4 m
Floor loading capacity	5 t/m <sup>2</sup>
Column grid structure	—
Structure	—
PENB	G
Reference number	104232

Warehouse and production space for rent in an industrial complex in the village of Tuchoměřice in the Prague-West district. The premises are suitable for light production, warehousing and business activities.

### Location:

The complex is located in the Prague-West district, in the village of Tuchoměřice, in close proximity to the R7 expressway in the direction of Prague-Chomutov and is less than 3 km from the Václav Havel International Airport Prague (Prague/Ruzyně).

### Production/warehouse premises:

- Flexible units from 370 sq.m.
- Office space up to 140 sq.m. for each unit
- Entrance gate - 3 x 3 m
- Floor loading capacity 5 t
- Clear height 7,4 m

**Available from Q1/2025.**

Tenant does not pay commission.



# Logistic park

3 777 m<sup>2</sup>, Praha-západ, Tuchoměřice, U Špejcharu

Ask for price

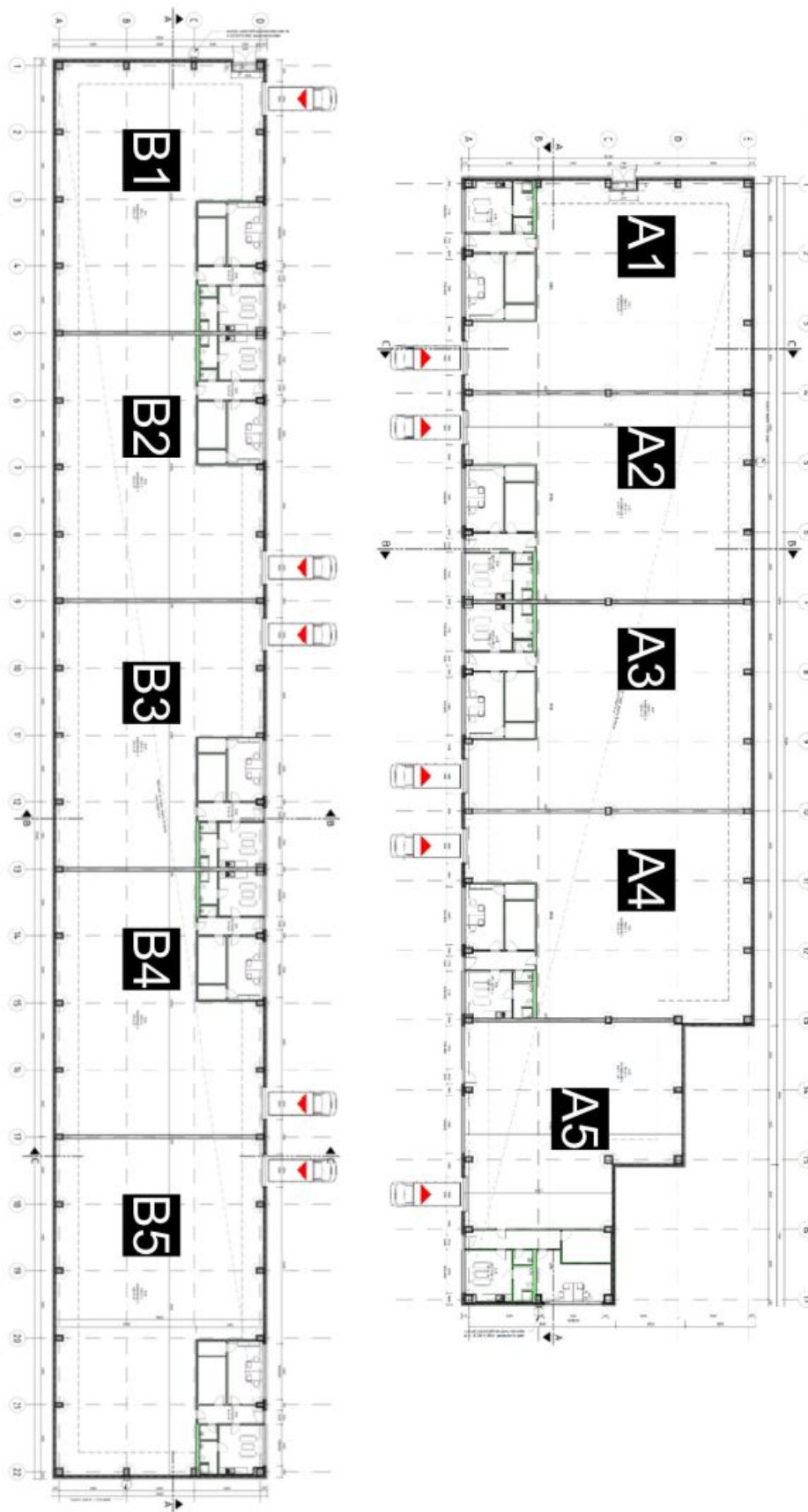




# Logistic park

3 777 m<sup>2</sup>, Praha-západ, Tuchoměřice, U Špejcharu

Ask for price





## Logistic park

3 777 m<sup>2</sup>, Praha-západ, Tuchoměřice, U Špejcharu

Ask for price

