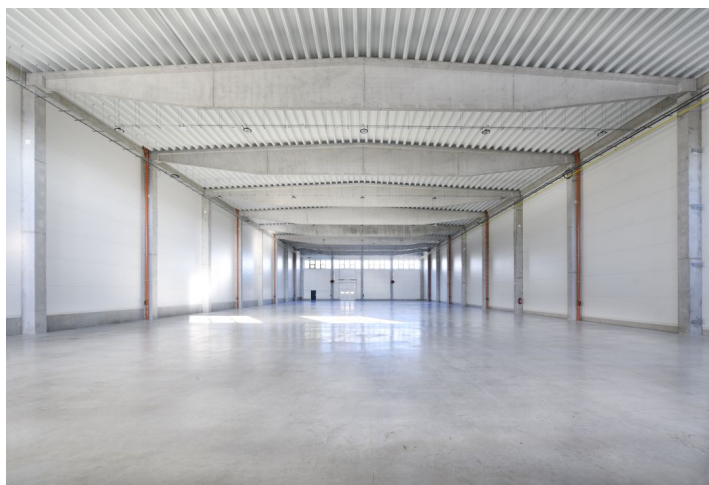




Warehouse space

1 464 m², Vyškov, Rousínov, Tománkova

Ask for price





Warehouse space

1 464 m², Vyškov, Rousínov, Tománkova

Ask for price

Total area	1 464 m ²
Available area for rent	1 464 m ²
Ceiling height	9.8 m
Floor loading capacity	10 t/m ²
Column grid structure	—
Structure	Reinforced concrete structure
PENB	G
Reference number	104269

1,464 sq.m. of warehouse, industrial and office space for lease in the logistic area situated close to Brno. Premises are suitable for light industry, logistics and business activity.

Location:

The park is located in Rousínov, about 20 km east of Brno, close to the D1 highway.

Features and Services:

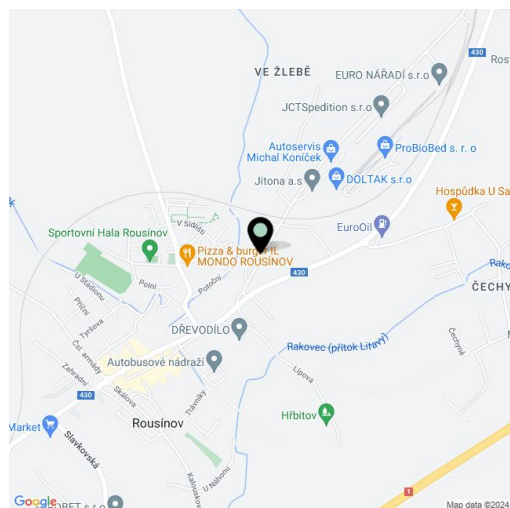
- Gas heating
- Clear height 9,8 m
- Floor loading capacity 10 t / m²
- Loading ramps
- Handling area
- Possibility of direct entrance for vans
- sectional doors
- Parking for trucks
- Parking for cars

Office:

Variable space

Available from 4Q/2025.

Lessee pays no commission.

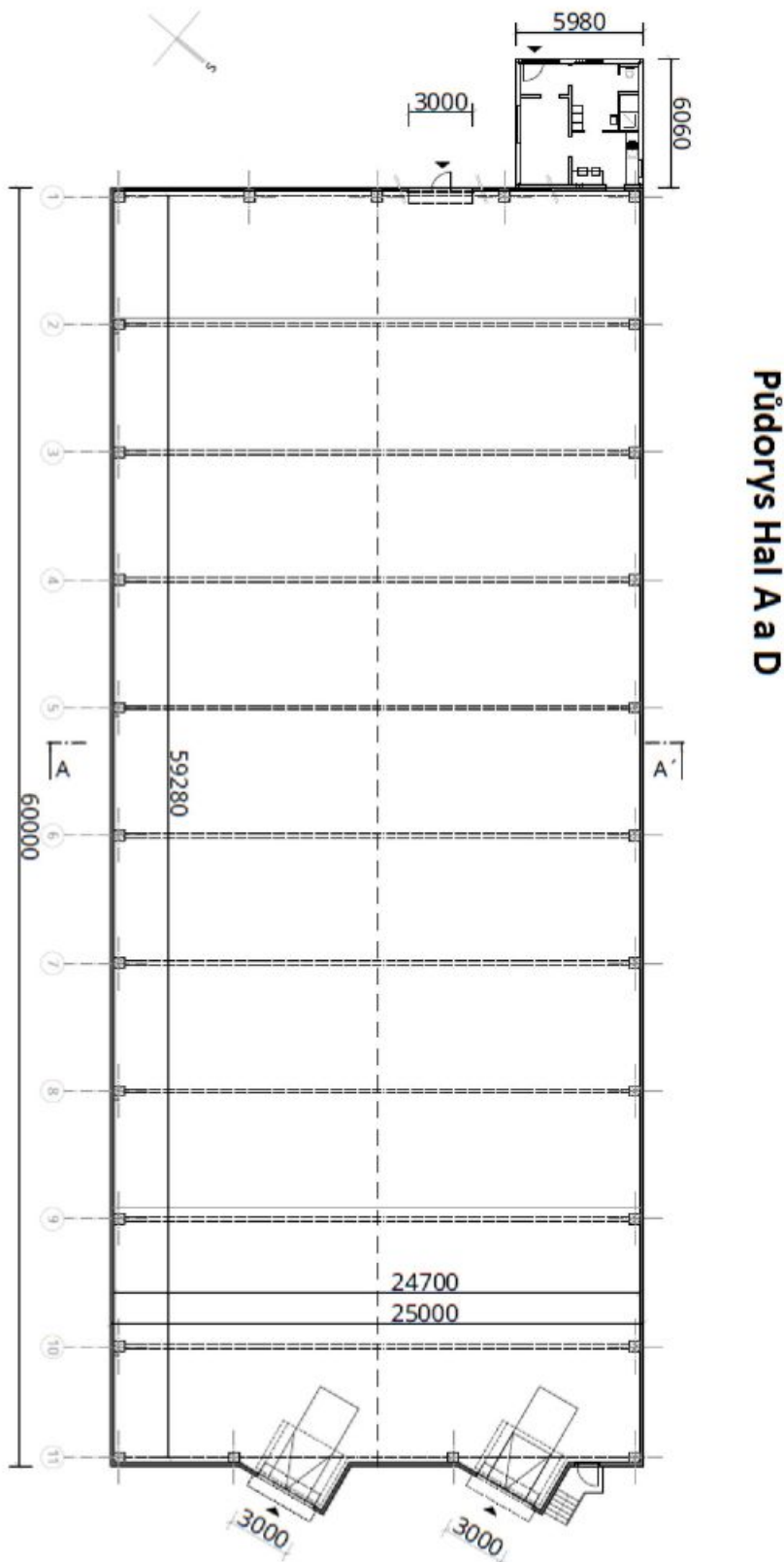




Warehouse space

1 464 m², Vyškov, Rousínov, Tománkova

Ask for price

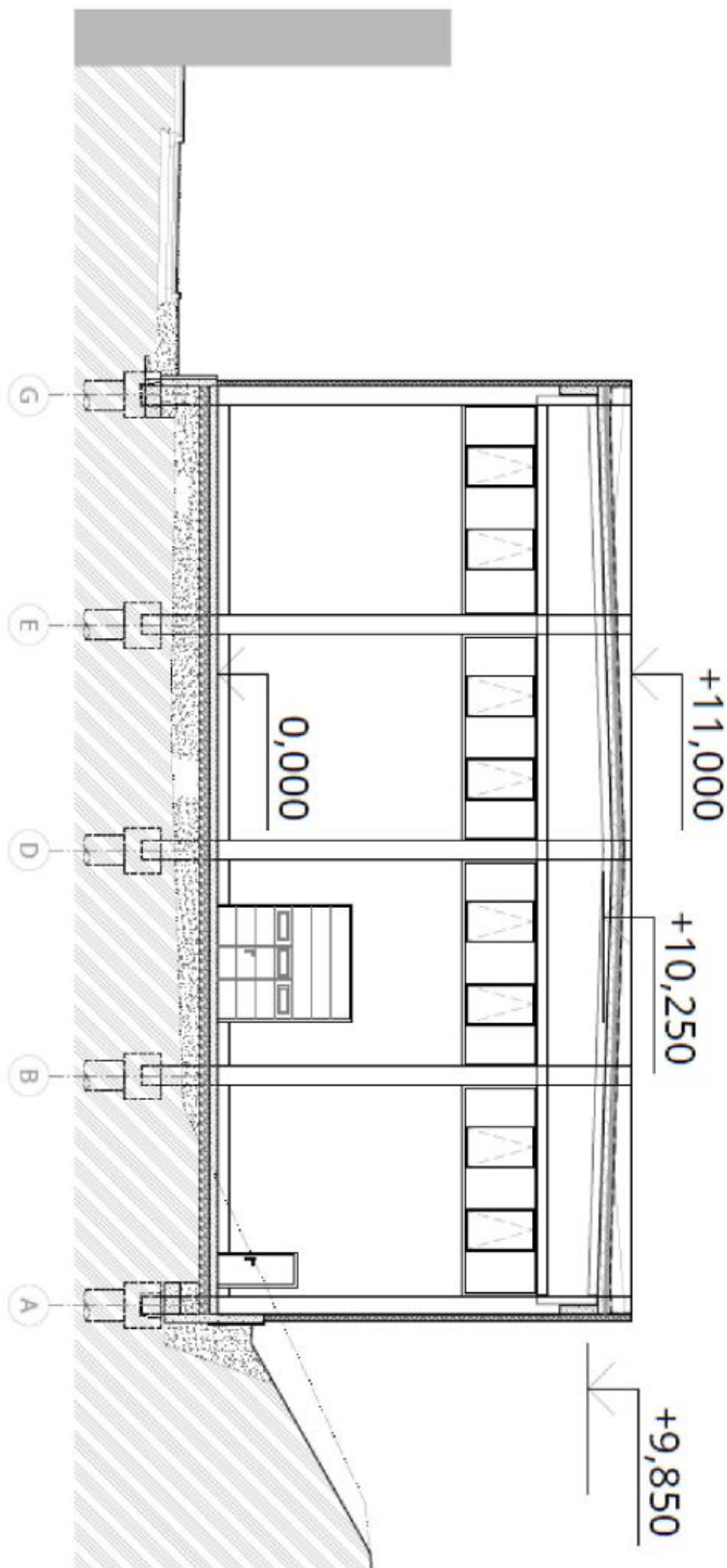




Warehouse space

1 464 m², Vyškov, Rousínov, Tománkova

Ask for price



Řez Hal A, B, C, D