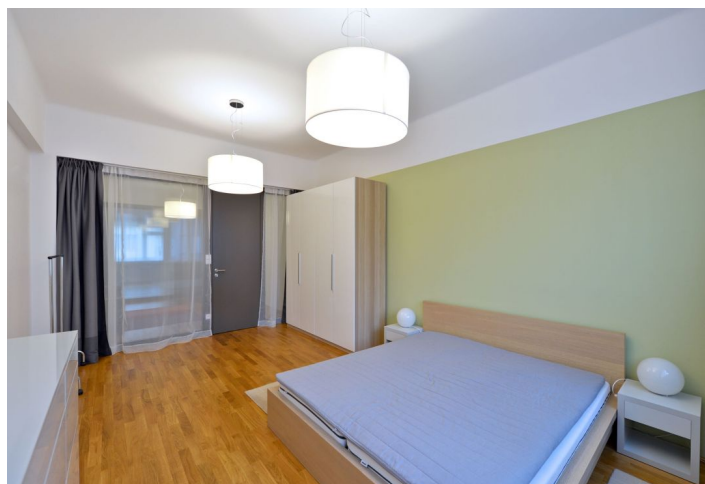




Apartment Two-bedroom (3+1)

Rented

87 m², Prague 1, Nové Město, Klimentská





Apartment Two-bedroom (3+1)

Rented

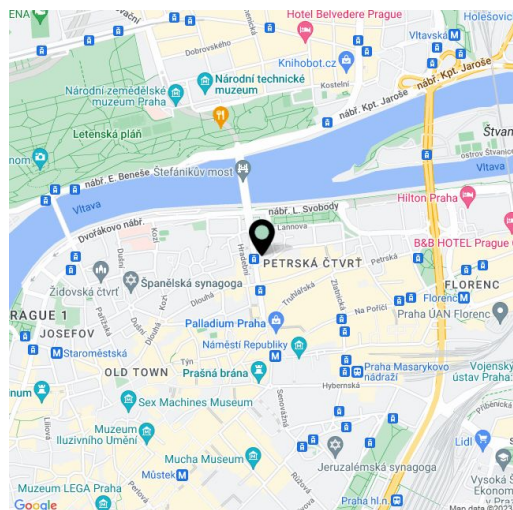
87 m², Prague 1, Nové Město, Klimentská

Total area	88 m ²
Floor area*	87 m ²
Balcony	1 m ²
Parking	-
Cellar	Yes
PENB	G
Reference number	10436
Available from	Immediately

Newly reconstructed architect designed furnished 2-bedroom flat with a balcony on the fifth floor of a well maintained renovated Functionalist building with a lift. Located in the city center just moments from the Vltava riverbank with a bike path and Lannova Park, and a few minute walk to Náměstí Republiky metro station and Palladium shopping mall.

The interior features two bedrooms, one on each side of the living room, separated by glass walls, there is a fully fitted kitchen with a balcony facing the yard, pantry, storage room, bathroom with tub and toilet, and entry hall with built-in storage.

Oak parquet floors, tiles, security entry door, triple glazed windows, black out blinds, gas heating, Siemens appliances incl. a washer, dryer and dishwasher, 3 m² basement storage unit. Deposit for common building charges CZK 2700/month. Electricity will be transferred to the tenant name.



* Area of the unit according to the Civil Code. The area consists of the sum total area of the entire unit bounded by perimeter walls.



Apartment Two-bedroom (3+1)

Rented

87 m², Prague 1, Nové Město, Klimentská

