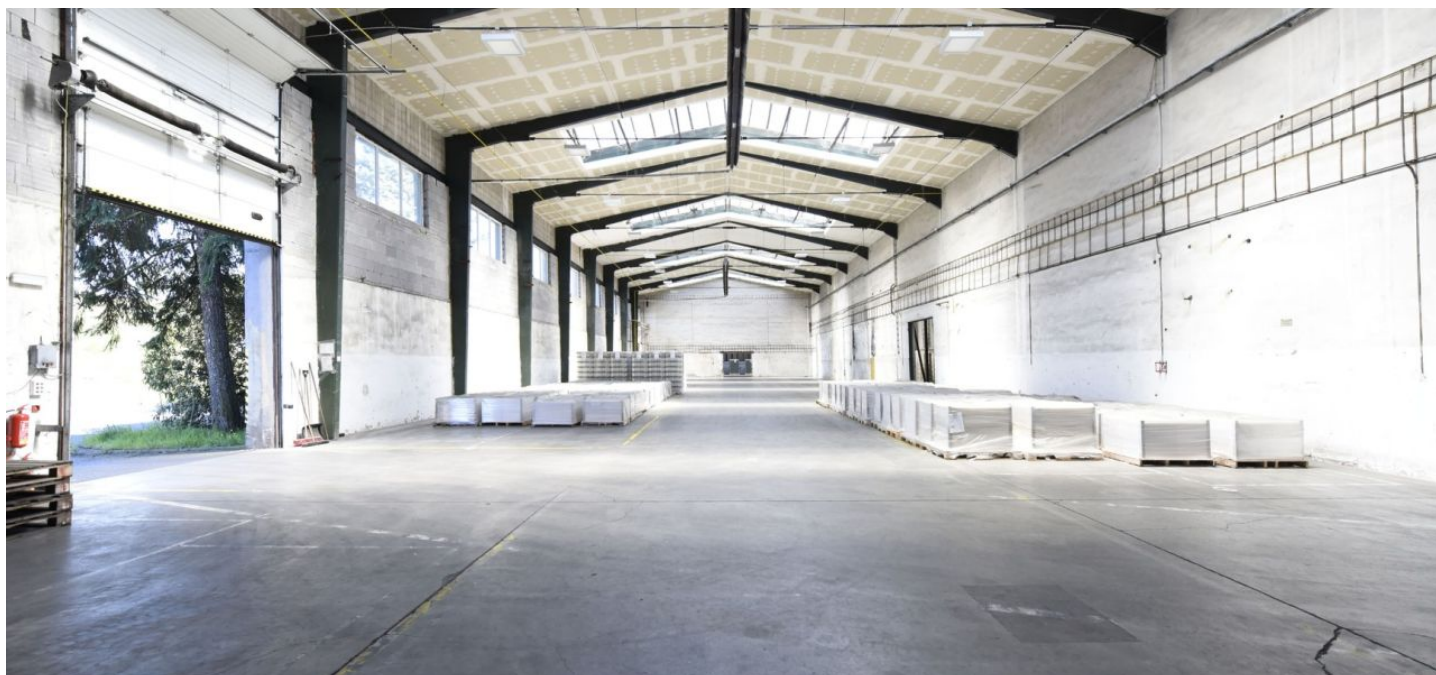




## Industrial space

6 570 m<sup>2</sup>, Teplice, Bystřany, Tovární

Ask for price





## Industrial space

6 570 m<sup>2</sup>, Teplice, Bystřany, Tovární

**Ask for price**

<b>Total area</b>	6 570 m <sup>2</sup>
<b>Available area for rent</b>	6 570 m <sup>2</sup>
<b>Min. area</b>	1 600 m <sup>2</sup>
<b>Ceiling height</b>	8.5 m
<b>Floor loading capacity</b>	5 t/m <sup>2</sup>
<b>Column grid structure</b>	—
<b>Structure</b>	Reinforced concrete structure
<b>PENB</b>	G
<b>Reference number</b>	104389

**6,570 sq.m.** of industrial and warehouse space for lease in the industrial park near Teplice. The premises are suitable for light production or warehousing.

### Location:

The site is located near Teplice on the 13 road and is easily accessible from the D8.

### Facilities and services:

- Property management on site
- Building maintenance
- Security
- Parking on site

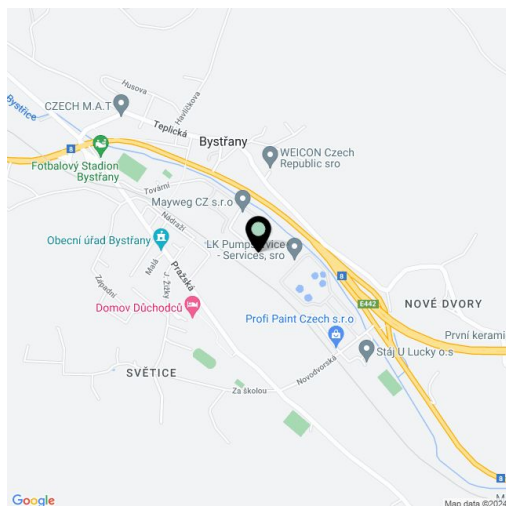
### Warehouse/production facilities:

- Industrial space from 1 600 sq.m.
- Floor load capacity 5 t/sq.m.
- Clear height 8,5 m
- Heating is possible by gas
- Sufficient electricity supply for production
- LED lighting

### Offices:

- administrative and social spaces can be built by reconstruction of existing unused spaces

The tenant does not pay commission.







## Industrial space

6 570 m<sup>2</sup>, Teplice, Bystřany, Tovární

Ask for price



