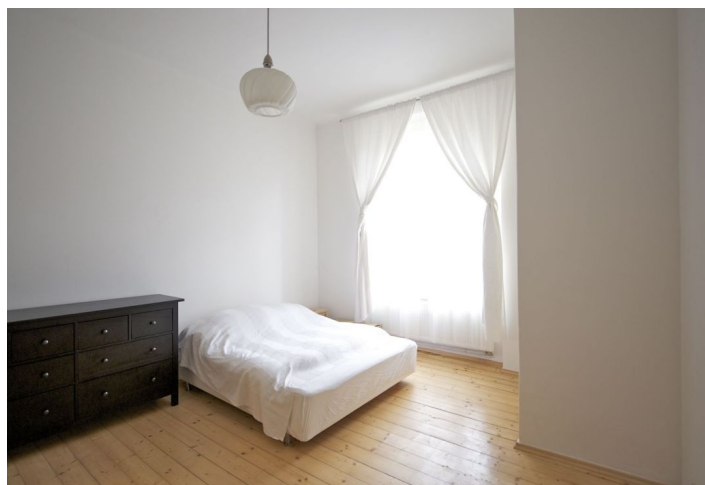
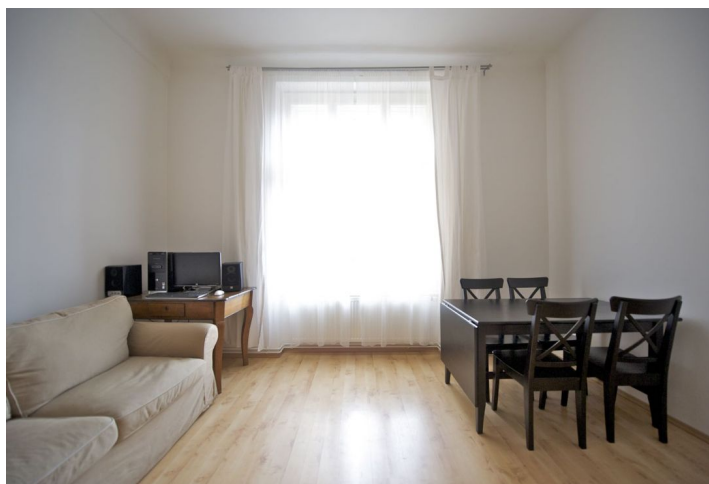




Apartment One-bedroom (2+kk)

Rented

60 m², Praha 6, Dejvice, Wuchterlova





Apartment One-bedroom (2+kk)

Rented

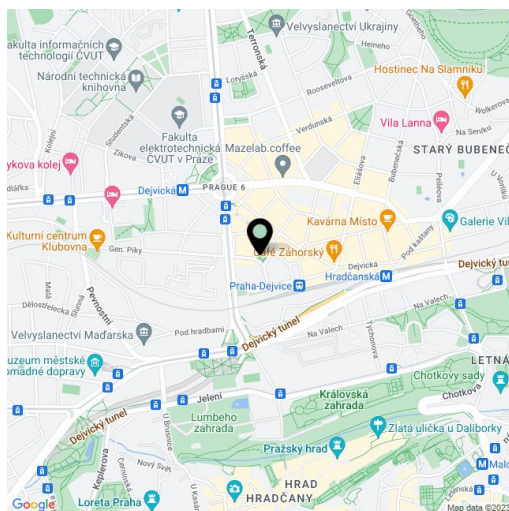
60 m², Praha 6, Dejvice, Wuchterlova

Total area	60 m ²
Parking	-
Cellar	-
PENB	G
Reference number	10439
Available from	Immediately

Furnished reconstructed 1-bedroom flat oriented towards the courtyard on the 2nd floor with lift in a renovated building located in the popular part of Prague 6, steps from Dejvická metro, trams and buses, with all amenities in close vicinity. Quiet street within walking distance of the Prague Castle, Stromovka and Letná parks, and a 15 minute drive to the Prague international airport.

The apartment has an entry hall with space for a study corner, one bedroom with a walk-in closet, living room with a fully fitted open kitchen, shower bathroom with sink, and a separate toilet with sink.

Plank floors, large windows, high ceilings, security bar on entry door, wardrobes, washer, dishwasher, satellite can be arranged. Basement storage available. Common building charges CZK 1000/month. Utilities are billed separately. Available from July 10th, 2017.



* Area of the unit according to the Civil Code. The area consists of the sum total area of the entire unit bounded by perimeter walls.