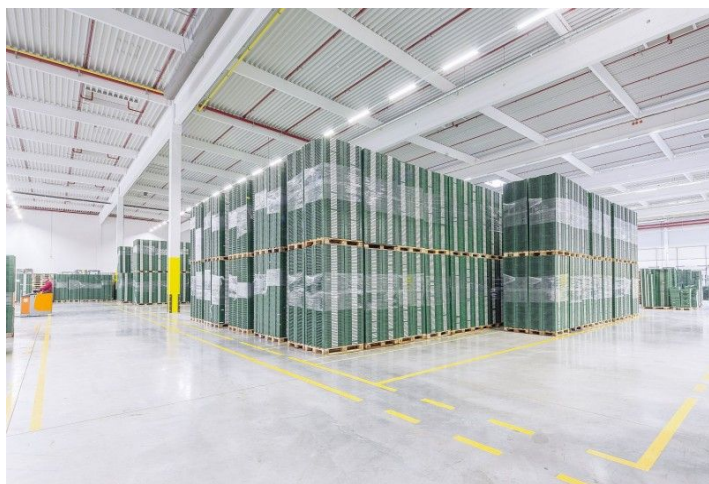




Industrial space

11 737 m², České Budějovice, České Budějovice, Okružní

Ask for price





Industrial space

11 737 m², České Budějovice, České Budějovice, Okružní

Ask for price

Total area	11 737 m ²
Available area for rent	11 737 m ²
Min. area	1 500 m ²
Ceiling height	10 m
Floor loading capacity	5 t/m ²
Column grid structure	—
Structure	Reinforced concrete structure
PENB	G
Reference number	104433

11,737 sq.m. of industrial, warehouse and office space for lease in the industrial park. On an area of 432 800 sq.m. there will be built 131 000 sq.m. of premises. The park offers units from 1,500 sq.m. up to large industrial areas. The premises are suitable for logistics services, light production and commercial activities.

Location:

The park is located on the outskirts of České Budějovice, in the Hůry commercial park. The site offers excellent transport connections to the city and is adjacent to the junction of Route 34 (E551) and the D3 motorway from Prague to Linz (Austria). There will be a direct exit to and from the motorway.

Features and Services:

- Flexible units (storage / office / light production / showroom)
- Onsite property management
- Park maintenance
- Sufficient parking space
- High standard of building

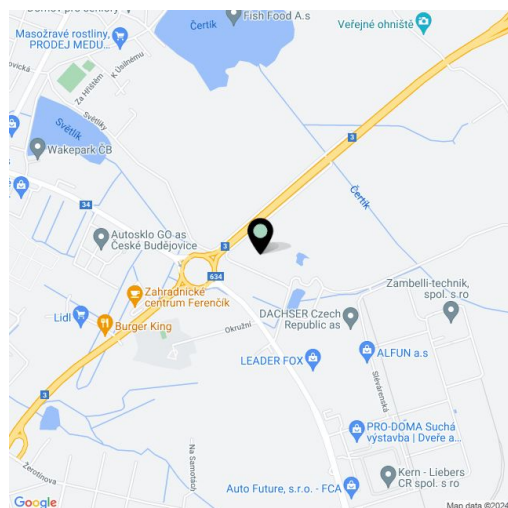
Industrial/Warehouse space:

- Floor loading capacity 5 T/sq.m
- Clear height 10 m
- Column grid structure 12x12 m a 12x24 m
- Light intensity 300 Lux
- Utility connections (water, sewage, gas, electricity)

Office:

- Turn key office
- Air-conditioning

Lessee pays no commission.





Industrial space

Ask for price

11 737 m², České Budějovice, České Budějovice, Okružní

