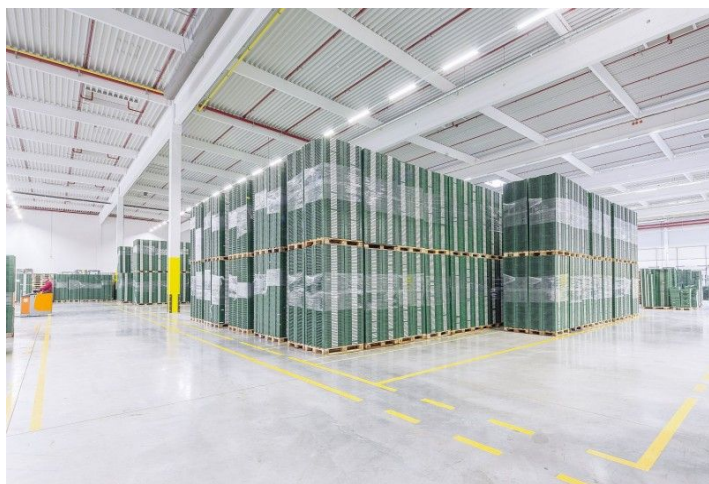




Industrial space

Ask for price

8 750 m², České Budějovice, České Budějovice, Okružní





Industrial space

8 750 m², České Budějovice, České Budějovice, Okružní

Ask for price

Total area	8 750 m ²
Available area for rent	8 750 m ²
Min. area	1 500 m ²
Ceiling height	10 m
Floor loading capacity	5 t/m ²
Column grid structure	—
Structure	Reinforced concrete structure
PENB	G
Reference number	104434

8,750 sq.m. of industrial and office space for lease in the industrial park. Premises are suitable for logistics, industrial or commercial activities. On an area of 432 800 sq.m. will be built more than 131 000 sq.m. of premises. The park offers units from 1,500 sq.m. The premises will be available within 10-12 months after signing a contract.

Location:

The park is located on the outskirts of České Budějovice, in the Hůry commercial park. The site offers excellent transport connections to the city and is adjacent to the junction of Route 34 (E551) and the D3 motorway from Prague to Linz (Austria). There will be a direct exit to and from the motorway.

Features and Services:

- Flexible units (storage / office / light production / showroom)
- Onsite property management
- Park maintenance
- Sufficient parking space
- High standard of building

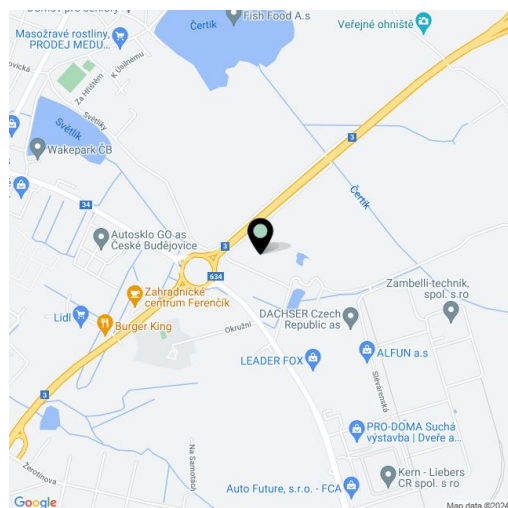
Industrial/Warehouse space:

- Floor loading capacity 5 T/sq.m
- Clear height 10 m
- Column grid structure 12x12 m a 12x24 m
- Light intensity 300 Lux
- Utility connections (water, sewage, gas, electricity)

Office:

- Turn key office
- Air-conditioning

Lessee pays no commission.





Industrial space

Ask for price

8 750 m², České Budějovice, České Budějovice, Okružní

