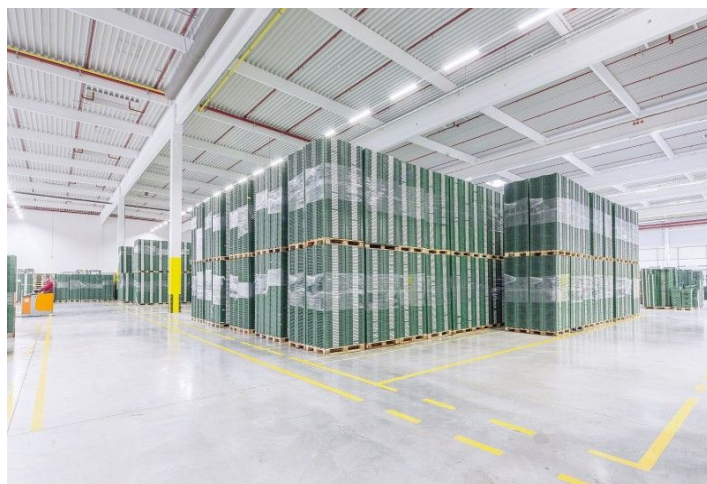




Warehouse space

Ask for price

5 455 m², České Budějovice, České Budějovice, Okružní





Warehouse space

[Ask for price](#)5 455 m², České Budějovice, České Budějovice, Okružní

Total area	5 455 m ²
Available area for rent	5 455 m ²
Min. area	1 500 m ²
Ceiling height	—
Floor loading capacity	—
Column grid structure	—
Structure	Reinforced concrete structure
PENB	G
Reference number	104439

5,455 sq.m. of warehouse and office space for lease in the logistic park. On an area of 432 800 sq.m. will be built more than 131 000 sq.m. of premises. The park offers units from 1,500 sq.m. The premises are suitable for logistics services, light production and commercial activities. The premises will be available within 10-12 months after signing the contract.

Location:

The park is located on the outskirts of České Budějovice, in the Hůry commercial park. The site offers excellent transport connections to the city and is adjacent to the junction of Route 34 (E551) and the D3 motorway from Prague to Linz (Austria). There will be a direct exit to and from the motorway.

Features and Services:

- Flexible units (storage / office / light production / showroom)
- Onsite property management
- Park maintenance
- Sufficient parking space
- High standard of building

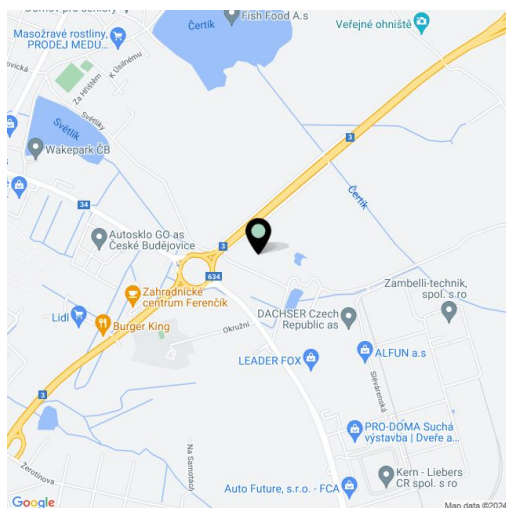
Industrial/Warehouse space:

- Floor loading capacity 5 T/sq.m
- Clear height 10 m
- Column grid structure 12x12 m a 12x24 m
- Light intensity 300 Lux
- Utility connections (water, sewage, gas, electricity)

Office:

- Turn key office
- Air-conditioning

Lessee pays no commission.





Warehouse space

Ask for price

5 455 m², České Budějovice, České Budějovice, Okružní





Warehouse space

Ask for price

5 455 m², České Budějovice, České Budějovice, Okružní

