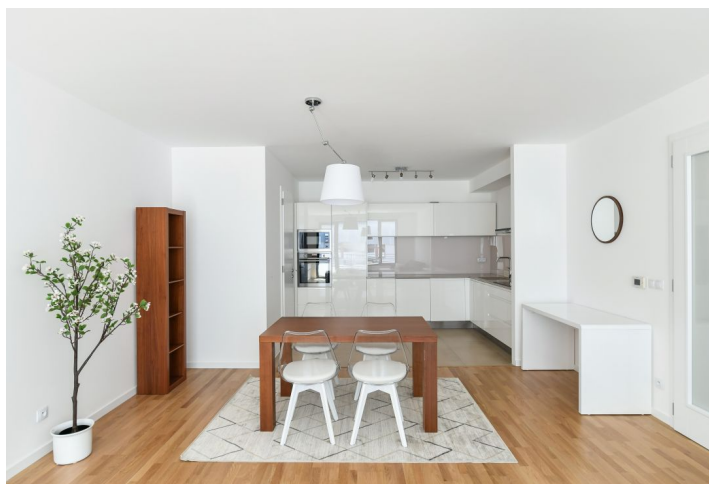




Apartment Three-bedroom (4+kk)

Rented

118 m², Prague 6, Břevnov, Nad Závěrkou





Apartment Three-bedroom (4+kk)

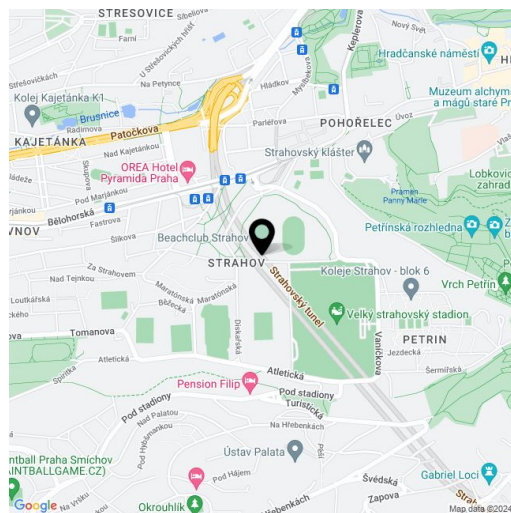
Rented118 m², Prague 6, Břevnov, Nad Závěrkou

Total area	136 m ²
Floor area*	118 m ²
Loggia	17 m ²
Parking	Garage parking.
Garage	Yes
Cellar	Yes
Service price	Monthly deposit for services, water, and heating: CZK 4,900 for one person, extra CZK 700 for other persons . Electricity is billed separately.
PENB	C
Reference number	104529
Available from	Immediately

This nicely furnished apartment for rent with 2 bathrooms and a terrace is on the 3rd floor of the Nad Závěrkou Residence with an elevator and underground parking. Set in one of the most attractive residential areas of Prague 6 - Břevnov, near a green park with a barbecue spot and a playground. A popular location close to the Prague Castle, near Ladronka Park and the Strahov sports grounds. An area with quick access to the city center, full amenities within walking distance, conveniently located for the airport and international schools in Prague 6 and 5.

The interior features a living room with a fully fitted open plan kitchen and a pantry, 3 bedrooms, 2 bathrooms (bathtub, toilet/walk-in shower, toilet), a storage/utility room, and an entrance hall with a built-in wardrobe. The **terrace** is accessible from the living room and one bedroom.

Hardwood floors, tiles, security entry door, roller blinds, automatic exterior blinds, central heating, washer, dryer, dishwasher, induction cooktop, microwave oven, video entry phone, **cellar**. A **garage parking** space is included.



* Size of the unit according to the Housing Act.
The area consists of the sum total of the internal area of every room.