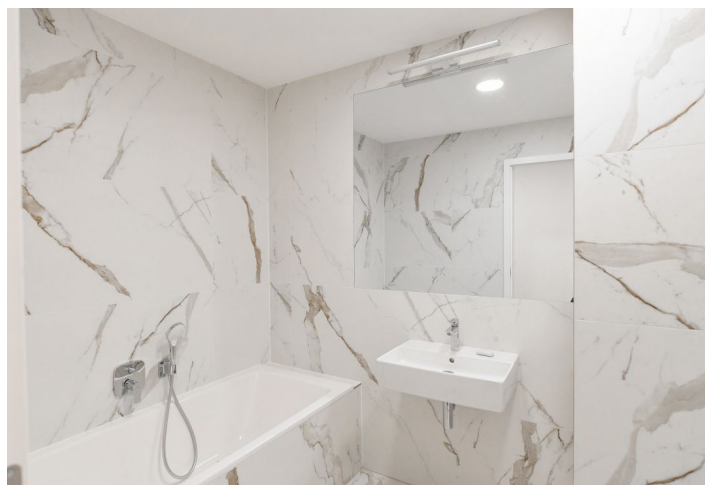
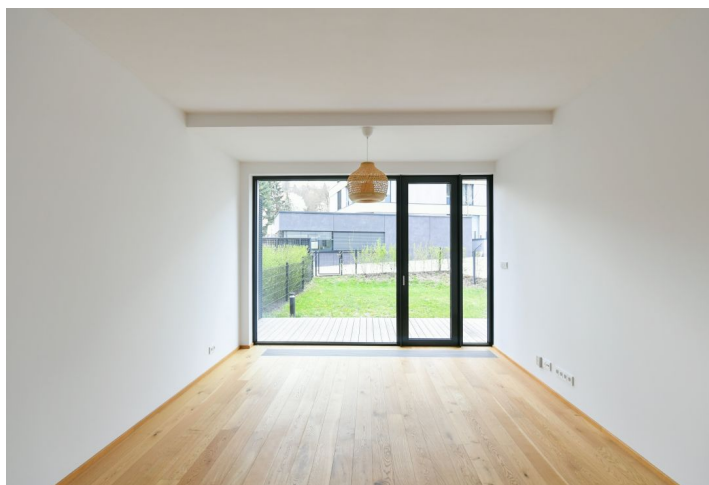
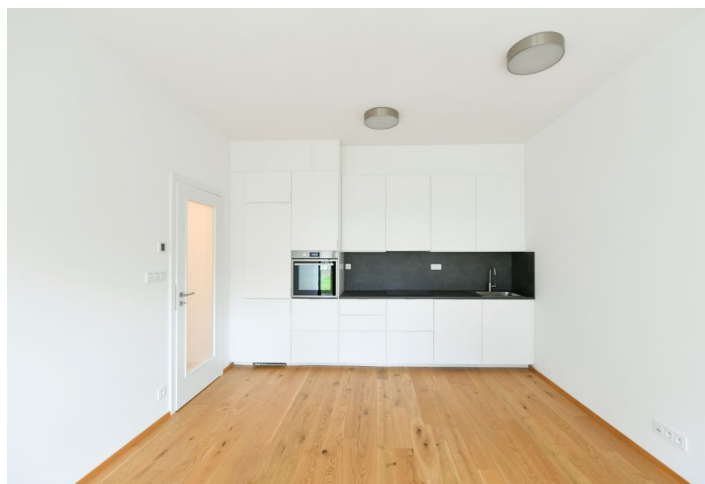




Apartment One-bedroom (2+kk)

Rented

64 m², Prague 6, Veleslavín, Na dračkách





Apartment One-bedroom (2+kk)

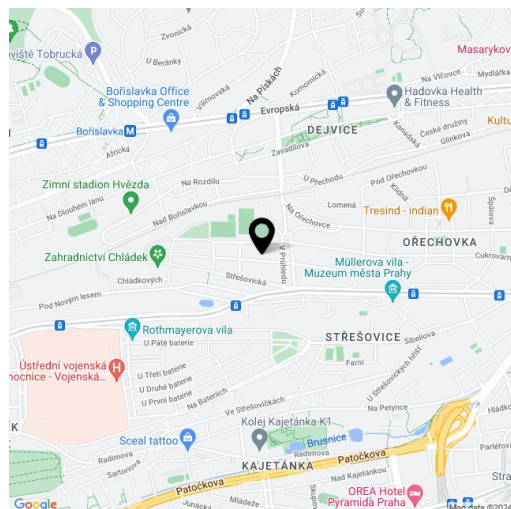
Rented64 m², Prague 6, Veleslavín, Na dračkách

Total area	75 m ²
Floor area*	64 m ²
Terrace	11 m ²
Front garden	55 m ²
Parking	Garage parking.
Garage	Yes
Cellar	12 m ²
Service price	Monthly deposit for service charges, water and heating: CZK 6,000. Electricity is billed separately.
PENB	B
Reference number	104530
Available from	Immediately

Benefiting from a small front garden, this brand new unfurnished 1-bedroom apartment with garage parking is situated on the ground floor of Maison Ořechovka, a high-quality contemporary residential complex with a 24/7 reception designed by the QARTA Architektura studio. Set in a premium location in the Ořechovka residential neighborhood in Prague 6, on the border of Střešovice and Dejvice, with plenty of greenery. Within easy reach of amenities, international schools (The Riverside School Junior High and ISP (International School of Prague)), and the airport. The project was awarded the Real Estate Project of 2020 prize in the category Best Project in the Czech Republic.

The apartment offers a living room with a fully fitted open plan kitchen and a dining area, a bedroom, a bathroom (bathtub, toilet with a bidet shower), a storage / utility room, and an entrance hall. The garden is accessible from both main rooms.

Hardwood floors, tiles, security entry door, automatic exterior blinds, central heating, dishwasher, induction cooktop, video entry phone, alarm, lawn mower, cellar, pram and bike storage, security cameras. A garage parking space is included.



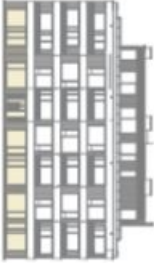
* Area of the unit according to the Civil Code. The area consists of the sum total area of the entire unit bounded by perimeter walls.




Apartment One-bedroom (2+kk)


Rented

64 m², Prague 6, Veleslavín, Na dračkách



1 NP





2+kk • 59,9 m² • 1NP	
BVT	
01 CHODBA	6,5 m ²
02 OBIVACÍ POKOJ - KUCHYŇSKÝ KOUT	25,2 m ²
03 POKOJ	17,3 m ²
04 KOUPELNA-WC	5,5 m ²
05 KLOMORA	5,4 m ²
UŽITNÁ PLOCHA BYTU	59,9 m²
PODLAHOVÁ PLOCHA BYTU	64,0 m²
06 TERASA	10,5 m ²
07 PŘEDZÁHRADKA	55,2 m ²







3m 5m



S