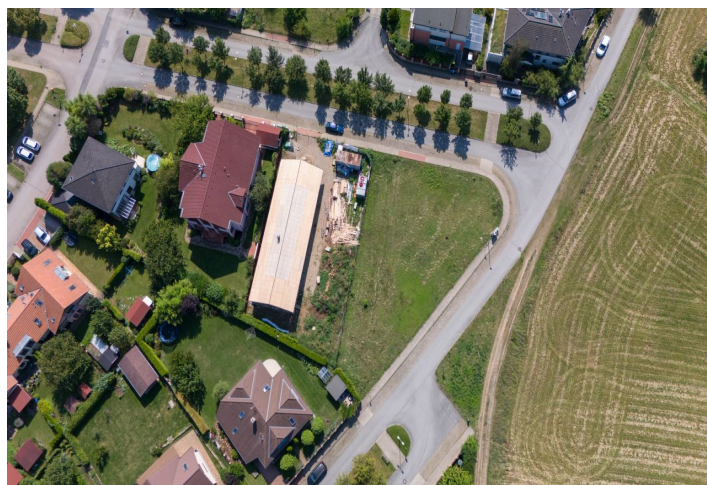
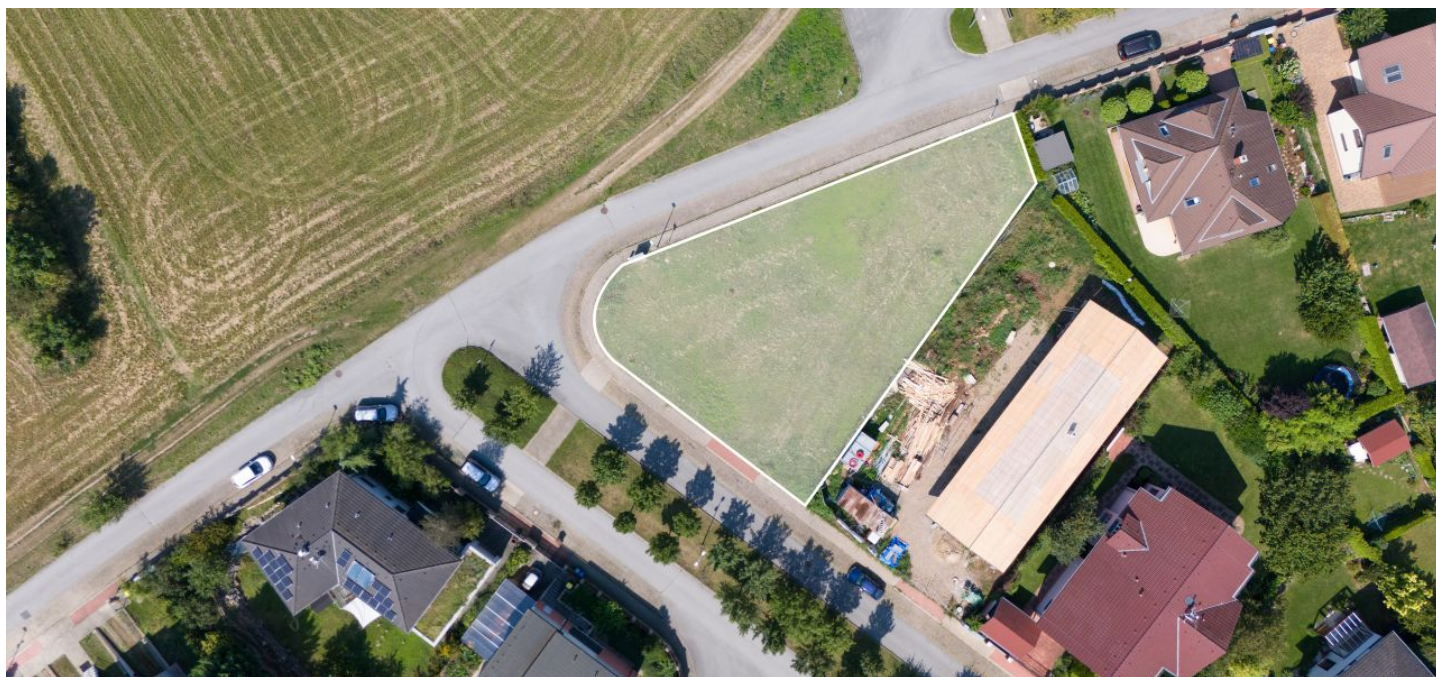




Land

1 056 m², Praha-západ, Roztoky, Čáslavského

€ 548 215 | CZK 13 900 000





Land

1 056 m², Praha-západ, Roztoky, Čáslavského

€ 548 215 | CZK 13 900 000

Price per sq. m.	13 163 CZK
Total area	1 056 m ²
Land type	Housing
Reference number	104551

This sunny flat plot of land ideal for building a family house is located in a quiet area called Solníky in the central Bohemian city of Roztoky, set on the outskirts of Prague and surrounded by a beautiful natural landscape.

The corner plot of more than 1,000 m² is part of an area for **housing** in the zoning plan. All utility network **connections are at the edge of the property**. Access is via an illuminated road with interlocking paving, the central part of which is formed by a **row of trees**.

Located on the edge of the development, it provides **nice views** of the surrounding greenery and **easy access to civic amenities**. About a 10-minute walk away is an **elementary school** and a state and **private kindergarten**. There are playgrounds, a **skatepark**, or an outdoor gym in the vicinity. In the nearby center of Roztoky is a supermarket and other shops, medical services, a restaurant, or a post office. Excellent transport links with Prague are provided by suburban buses and trains. By car you can quickly reach the airport or the Riverside Prague and ISP **international schools**.

Total area 1,056 m².

