



Apartment Studio (1+kk)

27.9 m², Prague 10, Strašnice, Ve Stínu

€ 222 002 | CZK 5 600 000





Apartment Studio (1+kk)

27.9 m², Prague 10, Strašnice, Ve Stínu

€ 222 002 | CZK 5 600 000

Total area	40 m ²
Floor area*	28 m ²
Terrace	12 m ²
Parking	-
Cellar	Yes
PENB	D
Reference number	104570

This new, bright apartment with a terrace and the possibility to use a common garden is part of the addition of a cozy apartment building in the traditional residential district of Prague 10 - Strašnice with all the infrastructure.

The area of the 3rd floor apartment is divided into a living room with preparation for the kitchen, a bathroom (with bathtub, toilet and connection for a washing machine) and an entrance hall. The living room is connected to the **terrace**.

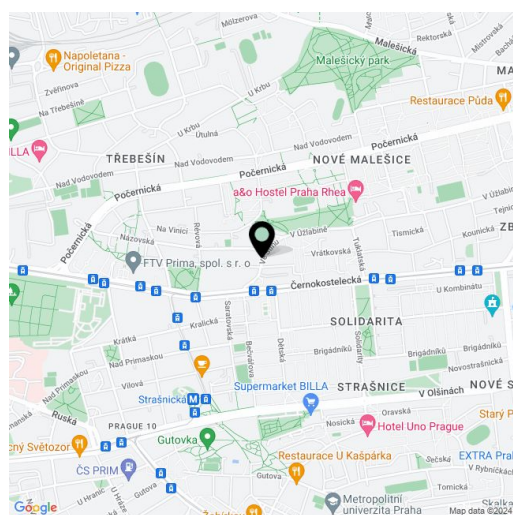
The **high standard facilities** include triple-glazed **wooden windows**, **oiled oak flooring** (in 4 color versions), fire safety entrance doors with **noise insulation**, interior panel doors with **M&T Burak fittings** in **matt nickel**, walk-in showers, **Villeroy & Boch** cast marble bathtub, sinks and toilets of the same brand, **Hansgrohe** shower sets with thermostatic faucet, **Tres** with concealed faucet or **Alshower** with **massage jets**, ISAN bathroom radiator, **Argenta Kenzo** and **Unique Travertine Minimal** or **Ribesalbes Ocean** large-format tiles and coverages, anti-slip tiles on the terrace, Legrand electrics end elements. Facilities also include the preparation of **exterior blinds** and **air conditioning**, floor heating in the entire apartment will be provided by a gas boiler. The apartment has a **cellar cubicle**, residents will have a **common garden**. Parking is in the zone for residents in front of the house. A brick building from the 20s/30s of the 20th century with 12 apartment units, the common areas have been reconstructed. There is **no elevator**.

The apartment building is located in a side street near the Solidarita tram stop, approx. 15 minutes' walk from the Strašnická metro station. There are restaurants, a post office, shops and medical services in the vicinity, the area is made more pleasant by **a lot of green areas** in gardens and **landscaped parks**.

Floor area 27.9 m², terrace 11.8 m².

Start of construction May/June 2024, **estimated completion date late 2024/early 2025**.

Visualizations are informative.



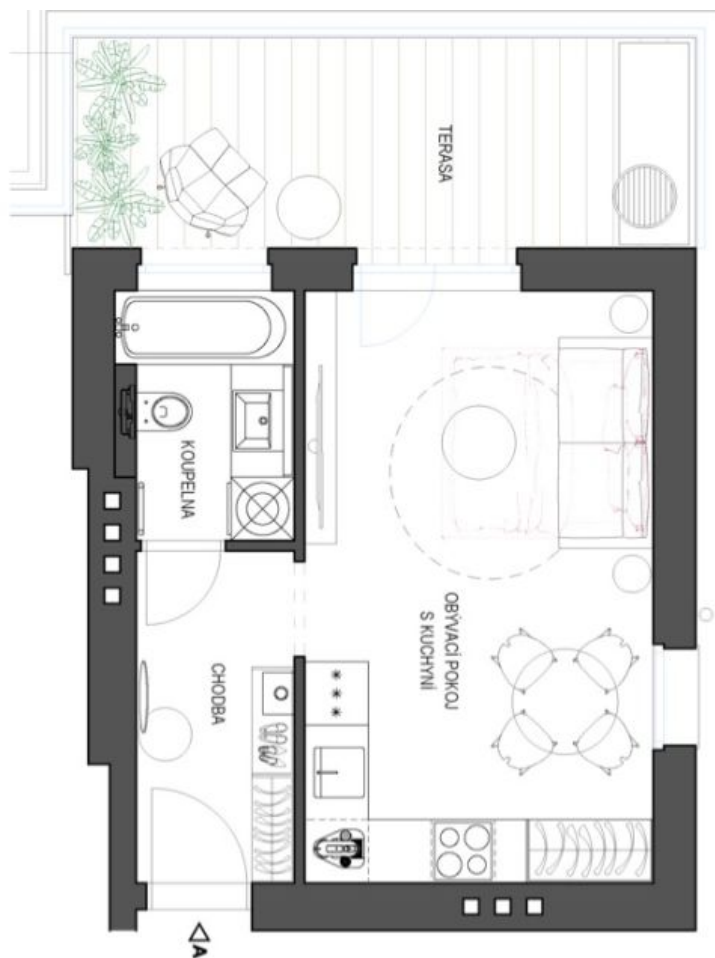
* Area of the unit according to the Civil Code. The area consists of the sum total area of the entire unit bounded by perimeter walls.



Apartment Studio (1+kk)

€ 222 002 | CZK 5 600 000

27.9 m², Prague 10, Strašnice, Ve Stínu



Přehled ploch	
Chodba	4,7 m ²
Obyvací pokoj s kuchyní	18,4 m ²
Koupelna	3,7 m ²
Užitná plocha	26,8 m ²
Podlahová plocha	27,9 m ²
Terasa	11,8 m ²
Celková plocha	39,7 m ²

